

***FACTOR***

***FACTORBIKES.COM***

2026 Sarana MANUAL

**CONFIDENTIAL AND  
UNDER EMBARGO**

## INTRODUCTION

Congratulations on the purchase of your FACTOR product. Please review thoroughly the following instructions and only follow them for correct operation and use. Should you fail to follow the following instructions and warnings, this could result in damage of the product, damage to the bicycle and in severe situations cause possible injury and or death.

Since specific tools and bicycle service experience is required for proper assembly installation, it is recommended that the product be assembled by a qualified bicycle mechanic. FACTOR BIKES assumes no responsibility for damages or injury due to improper assembly and installation of the product(s).

## LIMITED LIFETIME WARRANTY ON BICYCLES AND FRAMESETS

To qualify for FACTOR'S LIMITED LIFETIME WARRANTY please visit [www.factorbikes.com](http://www.factorbikes.com) and register your product(s) within 15-days of purchase.

## WARRANTY



## PRODUCT REGISTRATION



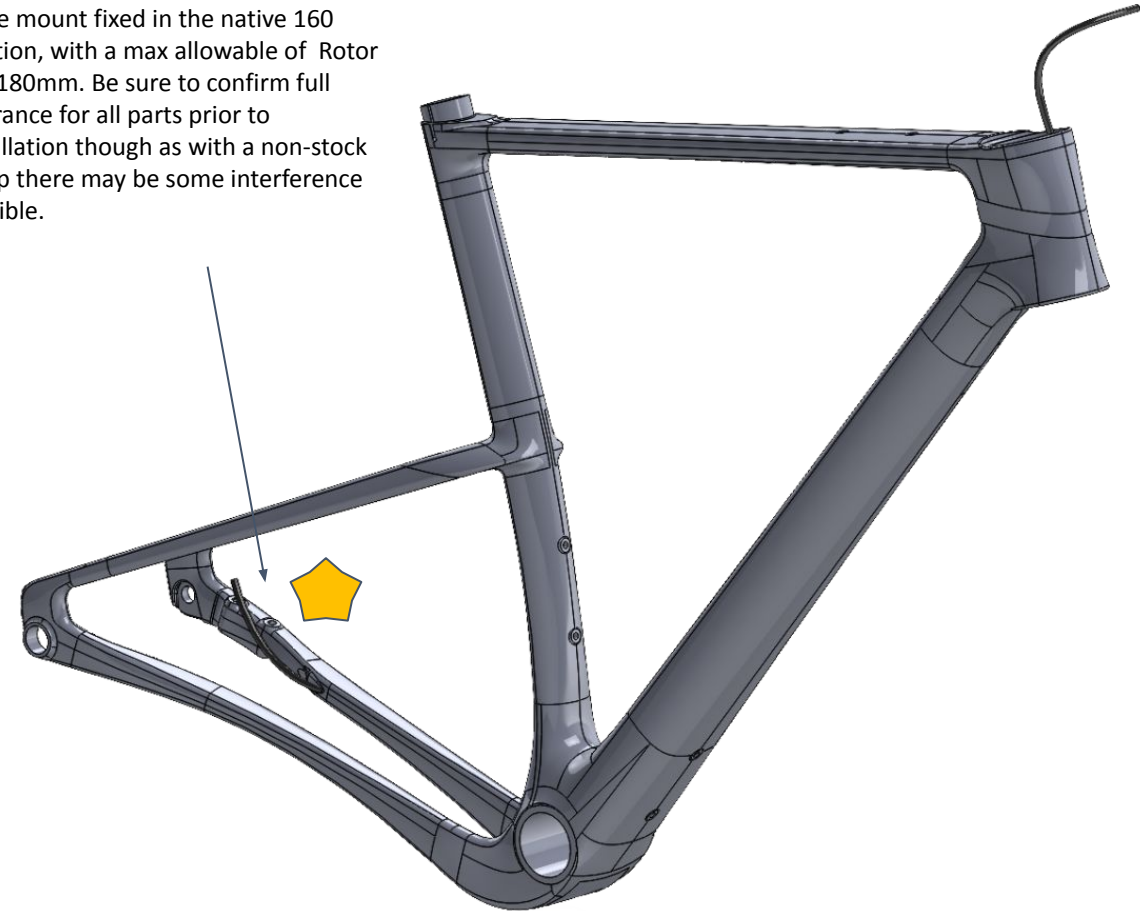
## Hose routing

- Install rear brake and fish hose through the frame and out the head tube
- install the anti rattle rear brake hose foam sleeve
- Insure that the clear plastic anti wear guard portion of the anti rattle hose covering is adjacent to the head tube to shield the brake hose from the steerer rotation
- Loosely fix rear brake caliper using appropriate length bolts

## Internal shifting routing

This frame is not compatible with 2x Di2, 1x only. You may be able to configure it with a wired 1x RD only, however this depends on what system you are running and it should be handled with a skilled mechanic on a case by case basis.

NOTE: The Sarana comes with the rear brake mount fixed in the native 160 position, with a max allowable of Rotor size 180mm. Be sure to confirm full clearance for all parts prior to installation though as with a non-stock setup there may be some interference possible.



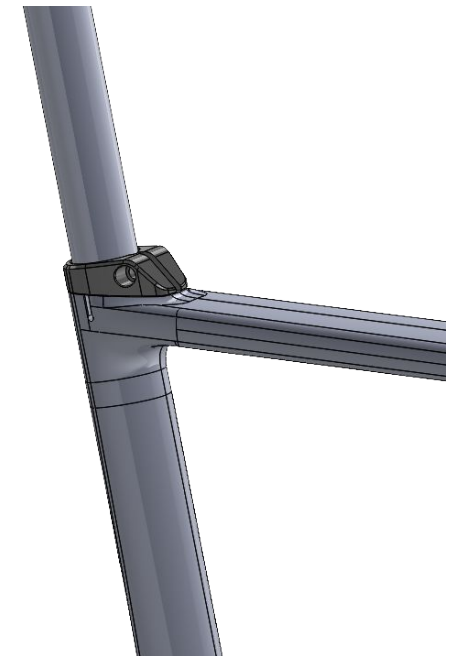
## Seatpost installation



Grease the area between the Clamp and the frame with a dielectric grease to prevent corrosion



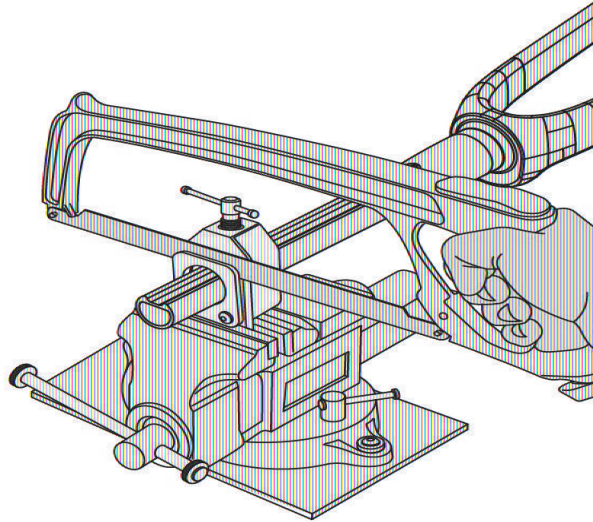
Apply frame assembly compound to the 30.9mm Round post. If installing a dropper post route cable/hose now. It is strongly recommended to use a wireless or hydraulic dropper only as routing past the HS may kink cables



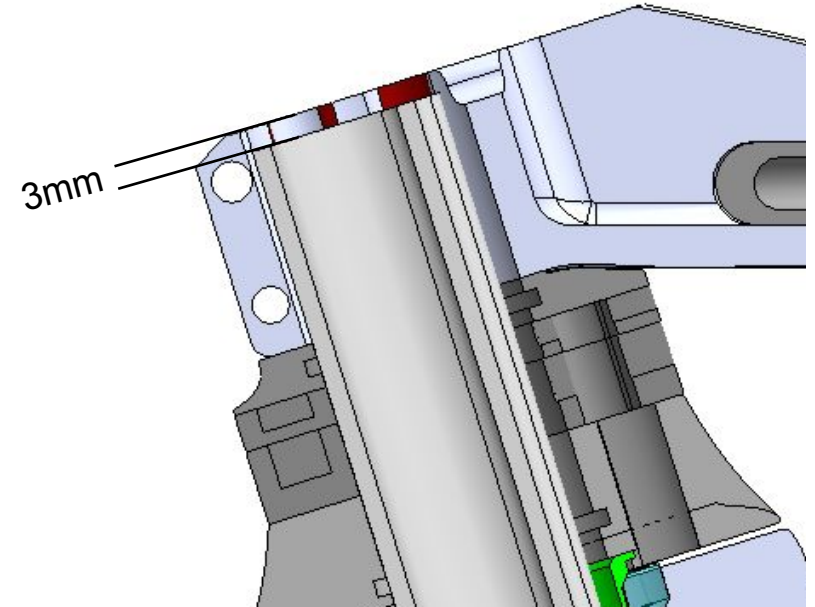
Install the post and set at desired height, remove excess grease/assembly compound. Ensure a minimum of 7-10cm of insertion depth. Tighten SP clamp to 4-6Nm

### Steerer

- Working with your mechanic determine the correct number of spacers, and cut the fork steerer tube as shown below

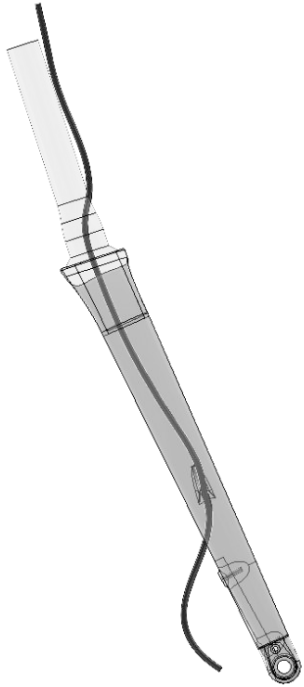


Pre-cut fork steerer making sure that it is cut 3mm below the top of the stem.

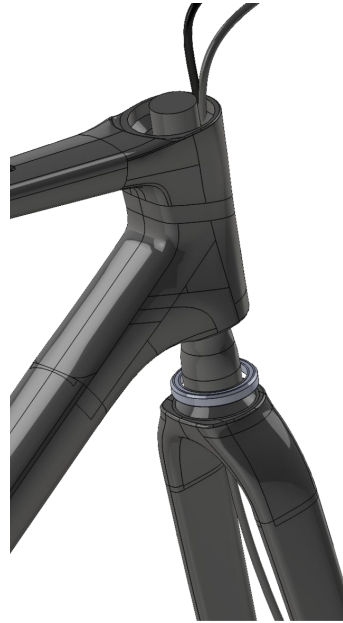


**WARNING!** Only use a maximum of 40mm of spacers (including tall headset cover) supplied with the frameset.

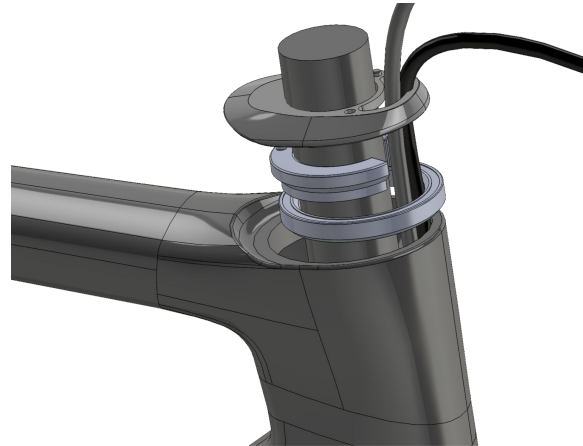
## Fork mounting



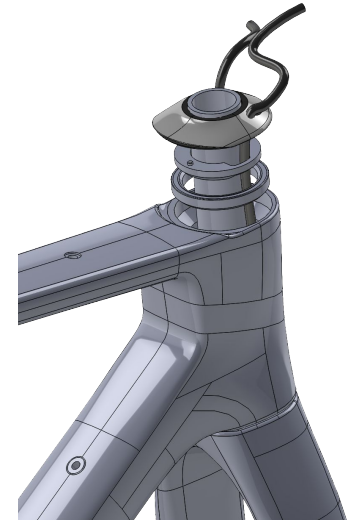
Pull brake hose through the fork and leave full length



Pull the hose through the lower bearing, grease the lower bearing seat, and install the fork and bearing into the frame

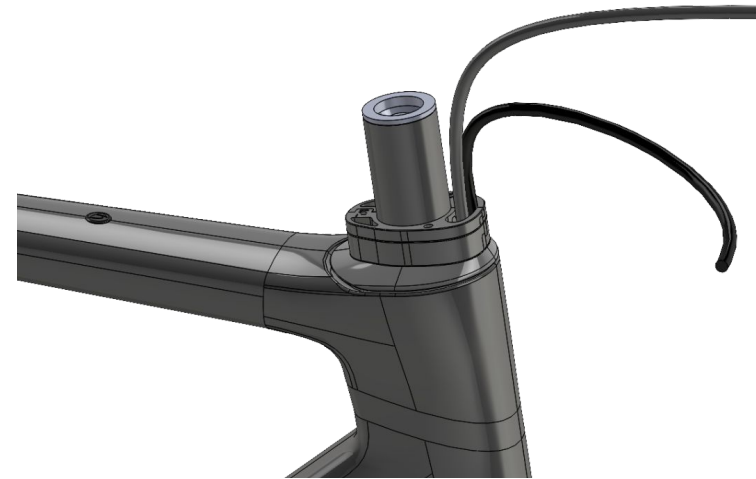


Grease and install the upper bearing, Split ring, and dust cap. Make sure the hoses go through the appropriate openings on the split ring and dust cover.



For setups using a 3rd party or conventional stem, use the top cap with two openings and the split ring with openings at the sides.

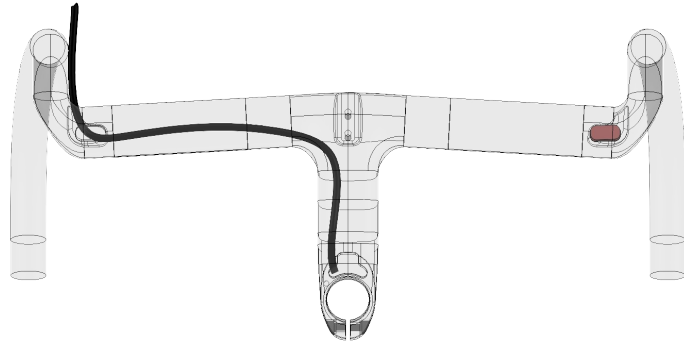
## Fork mounting



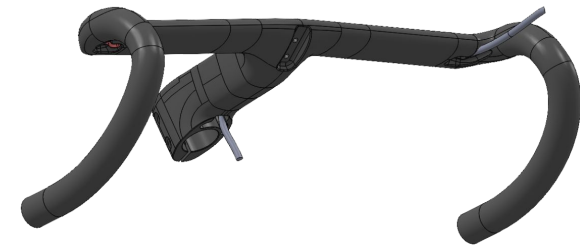
Install the relevant number of spacers.  
Note max spacer stack not to exceed 4cm

Apply carbon assembly paste to  
the compression plug, install in  
steerer, and tighten to 8 Nm

## Fork mounting



Snake hoses through the bar, respecting which is left and which is right and corresponding front/rear brakes

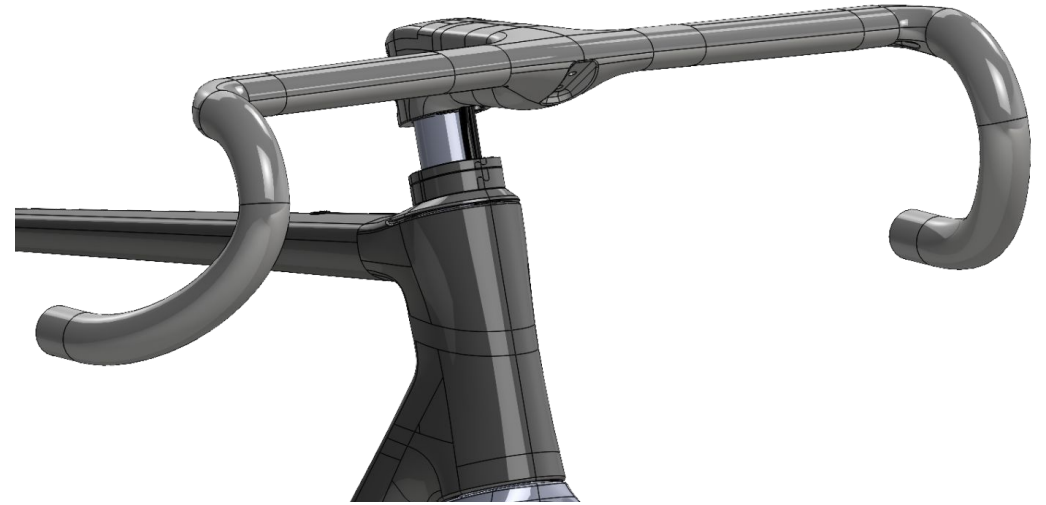


Pull excess hose through barstem, exiting on your desired side

## Fork mounting



Gently pull the hoses through the bar while starting to locate it over the steerer tube.



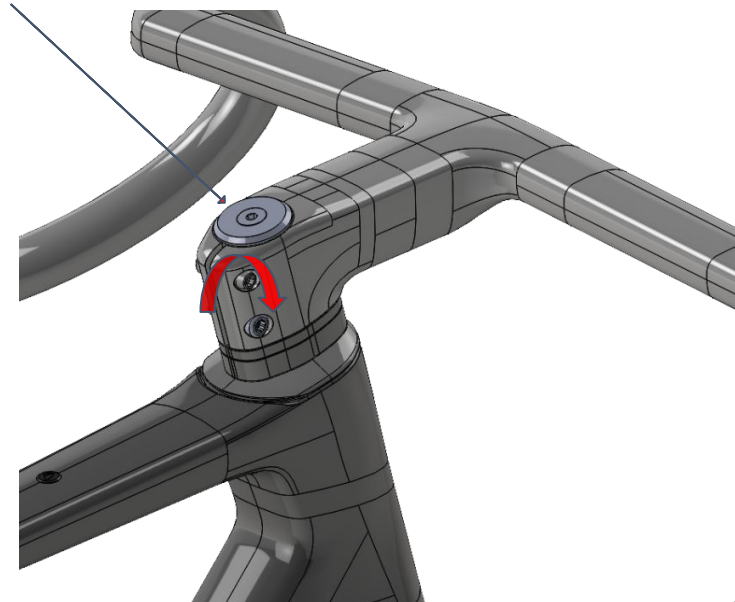
Alternating hoses and being sure to avoid kinking any lower it on the steerer tube until the bar sits atop the spacer stack

### Bar mounting

Center the bar on the bike's centerline prior to tightening. Ensure the spacer locating holes and mating features are aligned with the dust cap and the handlebar.

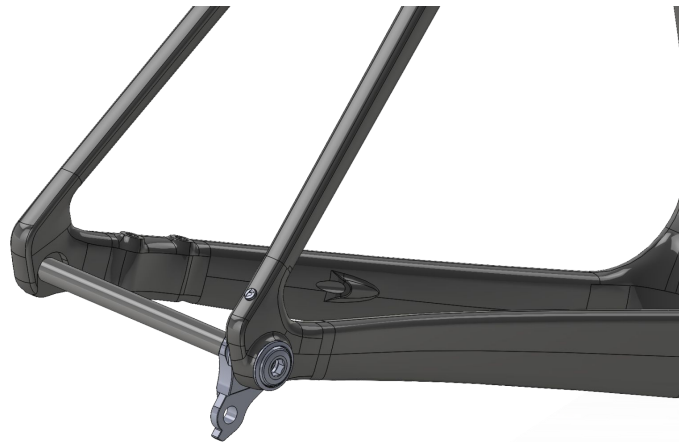
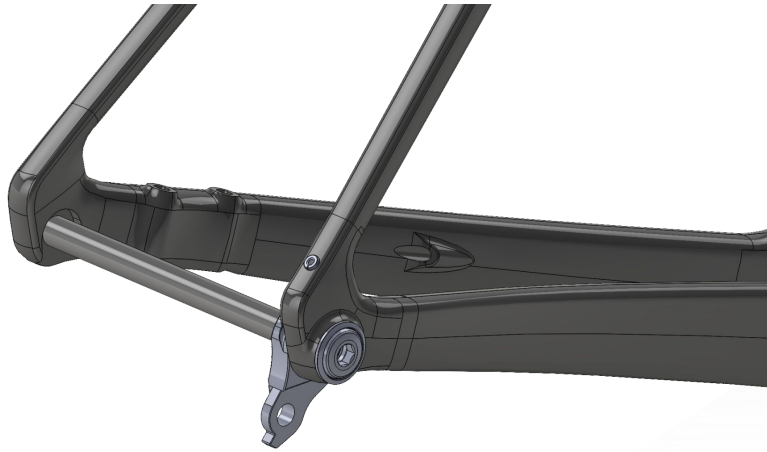
Tighten the compression top cap until sufficient preload is on the bearings.

Tighten the stem bolts to 5.2 Nm

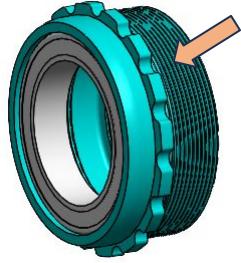


### Grommets

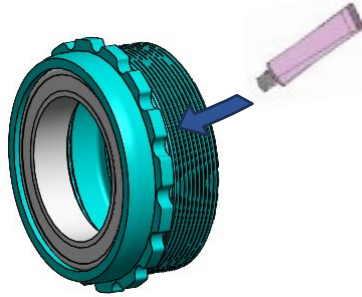
- Install the rear grommets, using either the Di2 passthrough style, or the E-Tap blanking style



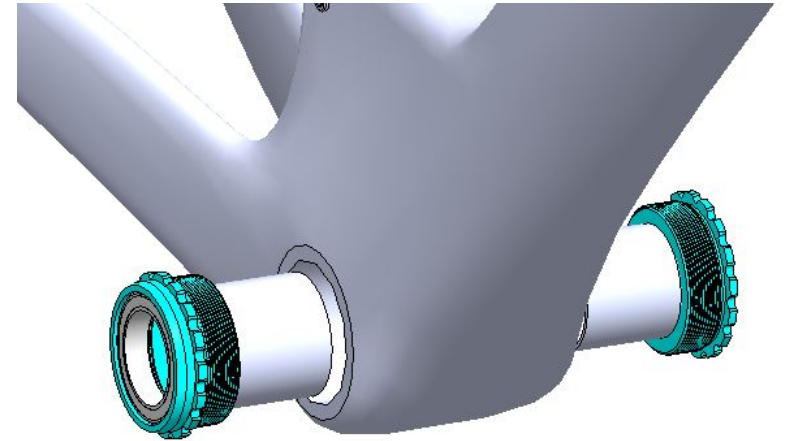
## 2026 Sarana



Clean the inside of the frame bottom bracket & the bottom bracket cups with an isopropyl alcohol.

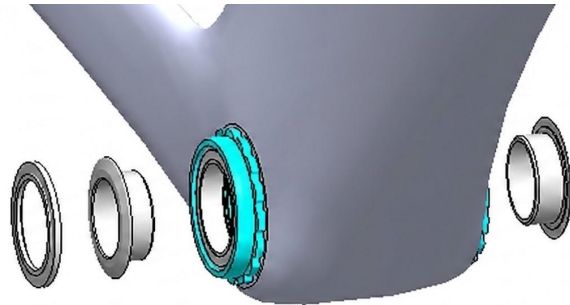


Apply a layer of good quality assembly paste to the threads of both bottom bracket cups. We recommend assembly paste from Morgan Blue (Auqaproof Paste) or r.s.p. (Creak Freak Assembling Paste).

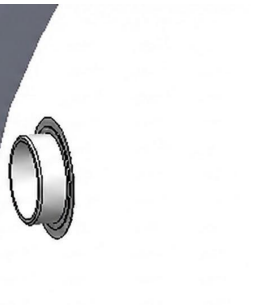


Thread the cups into the frame and torque the cups down to 40nm for both drive side and non drive side. We recommend using the CeramicSpeed T47/T45 Dual Socket Tool.

For SRAM DUB cranksets (WIDE spindle only), install the included 29mm dust covers and spacer in the following sequence.

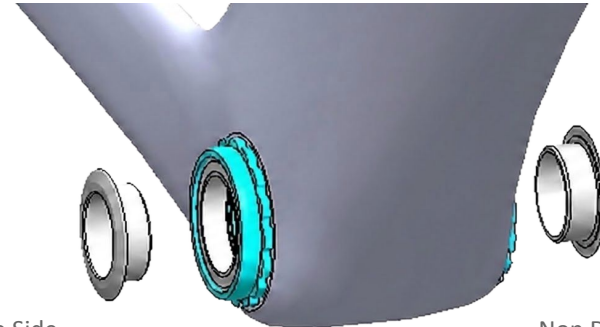


Drive Side  
3mm+29mm dust cover

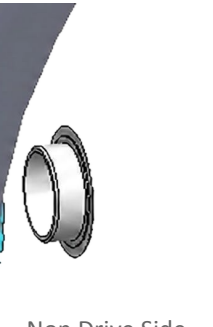


Non Drive Side  
29mm dust cover

For Shimano Hollowtech II cranksets, install the included 24mm dust covers and the crank installs directly without any spacers.



Drive Side  
24mm dust cover

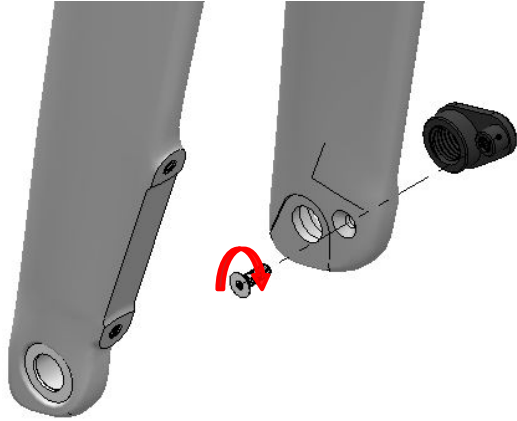


Non Drive Side  
24mm dust cover

The Frame is fitted with a UDH interface. If you use the UDH hanger follow the torque instructions on the hanger. If using a direct mount derailleur, follow the manufacturing instructions. Note that these derailleurs can feel like they are too loose fitting on the frame before the full torque value is reached, which is quite high.

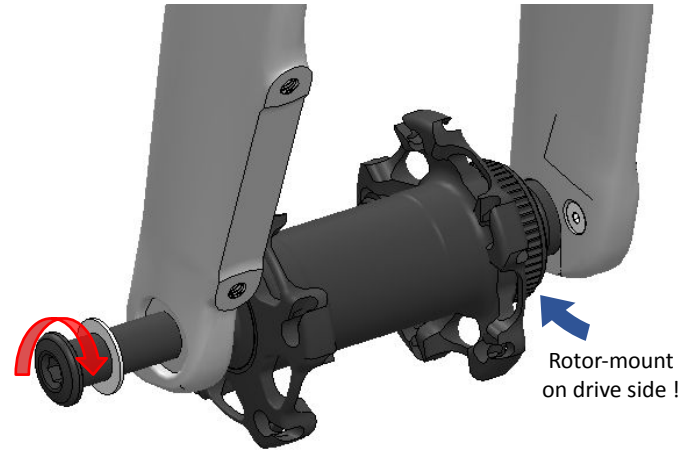


## 2026 Sarana

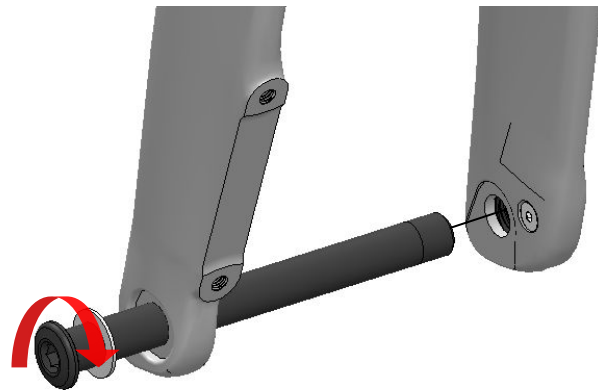
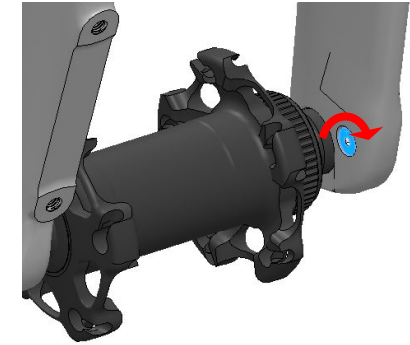


Apply Loctite 243 on bolt threads. Thread the bolt in but do not tighten, this will allow the insert to align when installing the axle

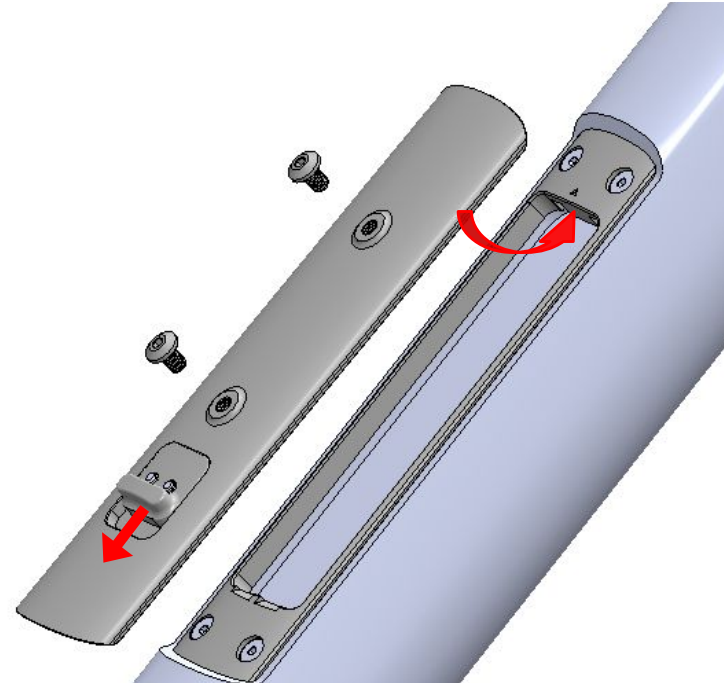
Install a front hub in the dropout with the free hub on non-drive side. This will allow better access for the next step. Install the thru-axle with the nylon washer and tighten to **12Nm**



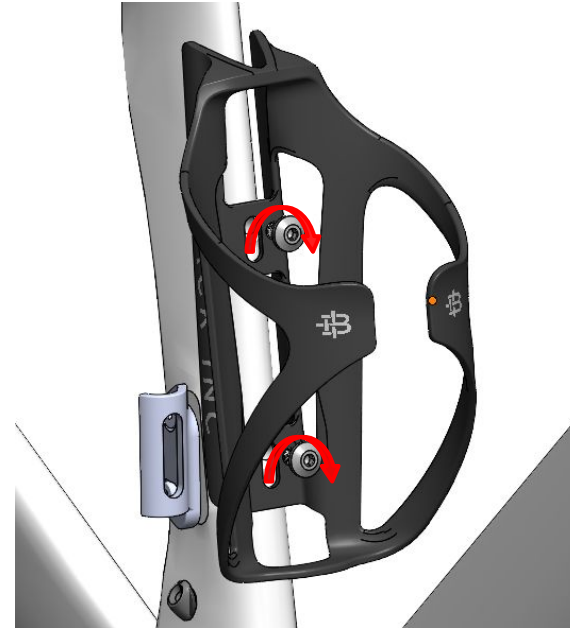
After ensuring the dropout insert is correctly aligned, tighten the dropout bolt to **1 Nm**.



Remove the thru-axle and remove the hub. Install front wheel and tighten the thru axle (with the nylon washer) to **12Nm**.



Insure that the factory installed bezel bolts are tightened (2Nm). Install cover and tighten M5 WB bolts with a high quality 3mm Hex head to **2 Nm**.



Install cages of your choice and tighten M5 bolts with a high quality 3mm Hex head to **2 Nm**.

***FACTOR***

***FACTORBIKES.COM***