

LYNK & CO



01

01

Press Release	3
Image Gallery	5
Car Features	9
Sustainability	15
Car-Sharing	17
Q&A	19
Fact Sheets	22
Biographies	28
Company Description	31
Press Contacts	32

As part of its expansion strategy, Lynk & Co is introducing an upgraded version of the popular 01 plug-in hybrid. This latest model boasts refined design updates inside and out, along with trim levels and color options. It also features a completely new electrical architecture, chip set, and advanced infotainment technology, as well as an all-new powertrain concept that delivers a more powerful and efficient plug-in hybrid experience.

September 2024, Lynk & Co launches a significantly upgraded version of its iconic 01 SUV, marking an important milestone in the brand's ongoing expansion. Subtle yet purposeful design updates give the 01 a new presence, evolving the model to feel more mature and refined. Driven by customer feedback, these enhancements balance familiar, beloved features with thoughtful refinements in key areas, while retaining what customers already appreciated. Alongside these updates, the new 01 features a completely new plug-in hybrid powertrain, offering increased power, an enhanced driving experience, improved fuel

Lynk & Co unveils exciting new version of 01 Plug-In Hybrid Car: Enhanced performance and Innovation

efficiency, and reduced emissions. Additionally, it benefits from a brand-new electrical architecture and boasts one of the most powerful automotive CPUs available, delivering a significantly faster and more advanced infotainment experience.

The distinctive Lynk & Co 01 is an SUV designed to turn heads and stand apart from the rest. It presents a more purposeful design that showcases a new gloss black grille, new wheels, and new rear LED lights. Complementing these enhancements is an expanded palette of refined body colors, with the signature Sparkling Black now joined by the new Crystal White and Mineral Green.

Technology remains at the forefront of every detail in the new 01. Inside the cabin, the infotainment system has been refined for quicker response times, ensuring drivers have seamless access to all features when needed. The system is now complemented by a high-definition driver display, a 15.4-inch HD touchscreen, and the powerful Qualcomm Snapdragon® 8155 chip for enhanced

performance. The design also introduces updated physical steering wheel controls allowing drivers to keep their full focus on the road.

The carefully curated enhancements to the new 01 underscore Lynk & Co's commitment to innovation and sustainability. These changes not only highlight the brand's leading position in plug-in hybrid technology but also establish it as a core element of Lynk & Co's DNA.

"The 01 has always been a vehicle that people love to drive. This launch represents a key milestone in our strategic expansion across Europe." says Nicolas López Appelgren, CEO of Lynk & Co International. "With the latest updates, and the introduction of the different specifications and colors, its appeal will reach an even broader range of consumers. As a progressive and vibrant brand, we're proud to build flexibility into our offerings and to continue to push boundaries within sustainable mobility."

A Sophisticated Plug-in Hybrid Powertrain: More Power and Efficiency

Building on the strengths of the original version, the newly improved Lynk & Co 01 marks a significant leap forward in technology, setting the stage for the brand's future. This latest version, honed by consumer feedback, balances innovation with familiarity - preserving what drivers loved while enhancing where it truly matters. From the exterior's refined look to the thoughtfully upgraded interior, every change is driven by the desire to improve the driving experience, and not just what meets the eye.

Central to the latest 01 is its advanced plug-in hybrid powertrain, which now takes center stage as a crucial element of the vehicle's performance. Leveraging the engineering expertise of the Zhejiang Geely Holding Group (Geely Holding), this powertrain not only boosts power and efficiency but also solidifies the 01

as a key player in the transition to full electric vehicles. With a combined output of 206 kW (276hp) and 535 Nm of torque, the car delivers sharper acceleration and more responsive handling on the road.

Fuel economy has been a primary focus, resulting in a remarkable consumption rate of just 0.9 litres/100 km and CO₂ emissions as low as 20 g/km (WLTP). These improvements underscore the 01's role as a bridge to a fully electrified future, offering up to 75 km of near-silent, pure electric driving for day-to-day commutes.

Lynk & Co is already well on its way to shaping the future of mobility, and the new 01 stands as a testament to the brand's commitment to continuous improvement and innovation. It is more than just an updated model; it is a forward-thinking vehicle designed to meet the evolving needs of drivers while paving the way for a fully electrified tomorrow.

LYNK&CO

Image Gallery



LYNK&CO



LYNK&CO





LYNK&CO

Car Features

LYNK & CO



A New Era of Choice: Color Options & Trim Levels

The new Lynk & Co 01 introduces a more mature and sophisticated aesthetic, offering three distinct body colors: two new options, Mineral Green and Crystal White, alongside the signature Sparkling Black. Mineral Green adds a unique, silky finish, while Crystal White features a pearlescent texture for added depth. Inside, the cabin introduces a sleek black palette with striking lime-yellow accents, creating a modern and refined atmosphere.

For the first time, the 01 is available in two distinct trims: **Core and More**. The Core version is designed to deliver all the essentials, focusing on practicality, style, and ease of use for everyday driving. It offers a well-rounded experience with

features that make the 01 a smart and functional choice without compromising on quality.

Meanwhile, the More version elevates this experience with added flair and distinctive features, offering extra comfort and technology. These enhancements include a panoramic sunroof, a 360-degree parking camera system for greater convenience, and speakers from Infinity by Harman. In addition to the regular colors, the More version offers an exclusive two-tone option, pairing a black contrast roof, black wheels, and black rims with either Crystal White or Mineral Green.



LYNK & CO

Inside & Out: A Blend of Iconic Style and Modern Functionality

The new Lynk & Co 01 stays true to its iconic roots, yet embraces thoughtful, customer-driven refinements inspired by direct feedback. Externally, subtle updates honor the bold design, while new color options add refinement. Inside, improvements in comfort, technology, and materials are a concrete reflection of what the brand's community asked for, creating a refined driving experience that balances style and practicality.

Enhanced Exterior Features for a Bold Presence

The new 01 has a fresh look with a sleek, black grille that gives it a sharper, bolder front. The main headlamps sit lower on the grille and include active blending lights on the More version. At the rear, the updated LED tail lamps include dynamic, sequential indicators that add a modern touch and improve road visibility. The Core and More versions feature 19-inch and 20-inch alloy wheels, which further enhance the vehicle's presence and agility on the road.

Intuitive Interior Design for a Personalized Experience

Inside, the design upgrades focus on creating a more intuitive and comfortable cabin. A redesigned center console and roof area deliver a cohesive and ergonomic layout that prioritizes user-friendly functionality. The 10.2-inch driver display and the 15.4-inch center touchscreen provide clear, easily accessible information. Additionally, customizable ambient lighting allows drivers to personalize the cabin environment, enhancing every journey -whether for relaxation or focus.





Cutting-Edge Tech Integration



One of the boldest updates lie beneath the surface, where a brand-new electrical architecture enhances performance and connectivity. At the heart of this system is the Qualcomm Snapdragon® 8155 chipset, one of the most powerful processors in the industry, delivering a significant boost in efficiency. This ensures faster load times, seamless multitasking, and heightened responsiveness in the vehicle's advanced infotainment system.

Central to this technological upgrade is a 15.4-inch high-definition touchscreen, one of the largest in its segment. It features anti-glare and anti-fingerprint properties, ensuring usability even in challenging lighting conditions, and is complemented by a fully digital 10.2-inch driver display, offering real-time customization of driving data to suit individual preferences.

The 01's new electrical architecture also includes 5G capability, ensuring faster data transmission, whether for in-car entertainment or real-time updates. With an inbuilt Wi-Fi hotspot, passengers can enjoy internet access on the go. Enhanced Voice Control now supports a broader range of natural commands for effortless control over smartphone, infotainment, navigation, and climate functions, with access to Wikipedia for non-vehicle-related information. Another key feature is over-the-air (OTA) updates, which allow the new 01 to receive continuous software upgrades without requiring a visit to a workshop. These updates ensure the new 01 stays at the cutting edge of technology, adapting to future improvements and offering drivers the latest features with minimal effort.

LYNK & CO



A Revolution in Performance: All-New Plug-in-Hybrid Powertrain

The 01's all-new plug-in hybrid powertrain represents a significant advancement in Lynk & Co's journey toward a fully electrified future. As drivers demand performance and sustainability, this innovative powertrain delivers on both fronts. Offering a combined output of 276 hp and 535 Nm of torque, it provides a dynamic, responsive driving experience with impressive fuel efficiency.

With a remarkable consumption rate of just 0.9 litres/100 km and CO₂ emissions as low as 20 g/km (WLTP, weighted combined), this system is among the most efficient plug-in hybrid SUVs available today. The vehicle's 17.6 kWh battery enables up to 75 km of all-electric range, offering near-silent driving with zero

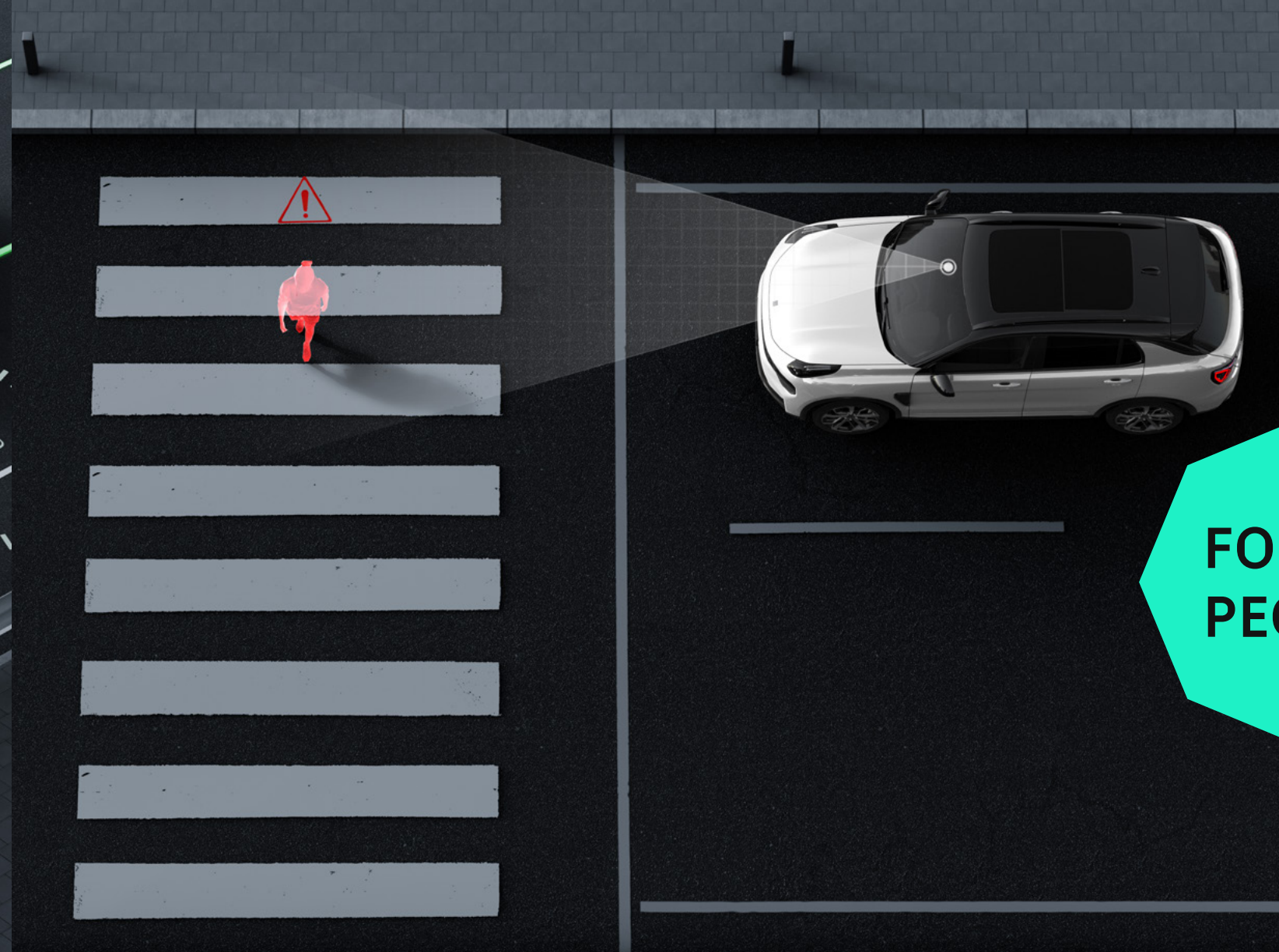
tailpipe emissions for daily commutes. The gasoline engine, which achieves a WLTP (combined) fuel efficiency rating of 6.4 litres/100 km with the battery fully discharged, adds flexibility for longer journeys.

Leveraging the resources of Geely Holdings' engineering expertise, this system bridges the gap between hybrid and electric mobility, offering a versatile solution for drivers who want the best of both worlds. As the world transitions to a greener future, the new 01 stands as a testament to Lynk & Co's commitment to be an active part of this transformation, offering the perfect vehicle for drivers at every stage of their electrification journey.

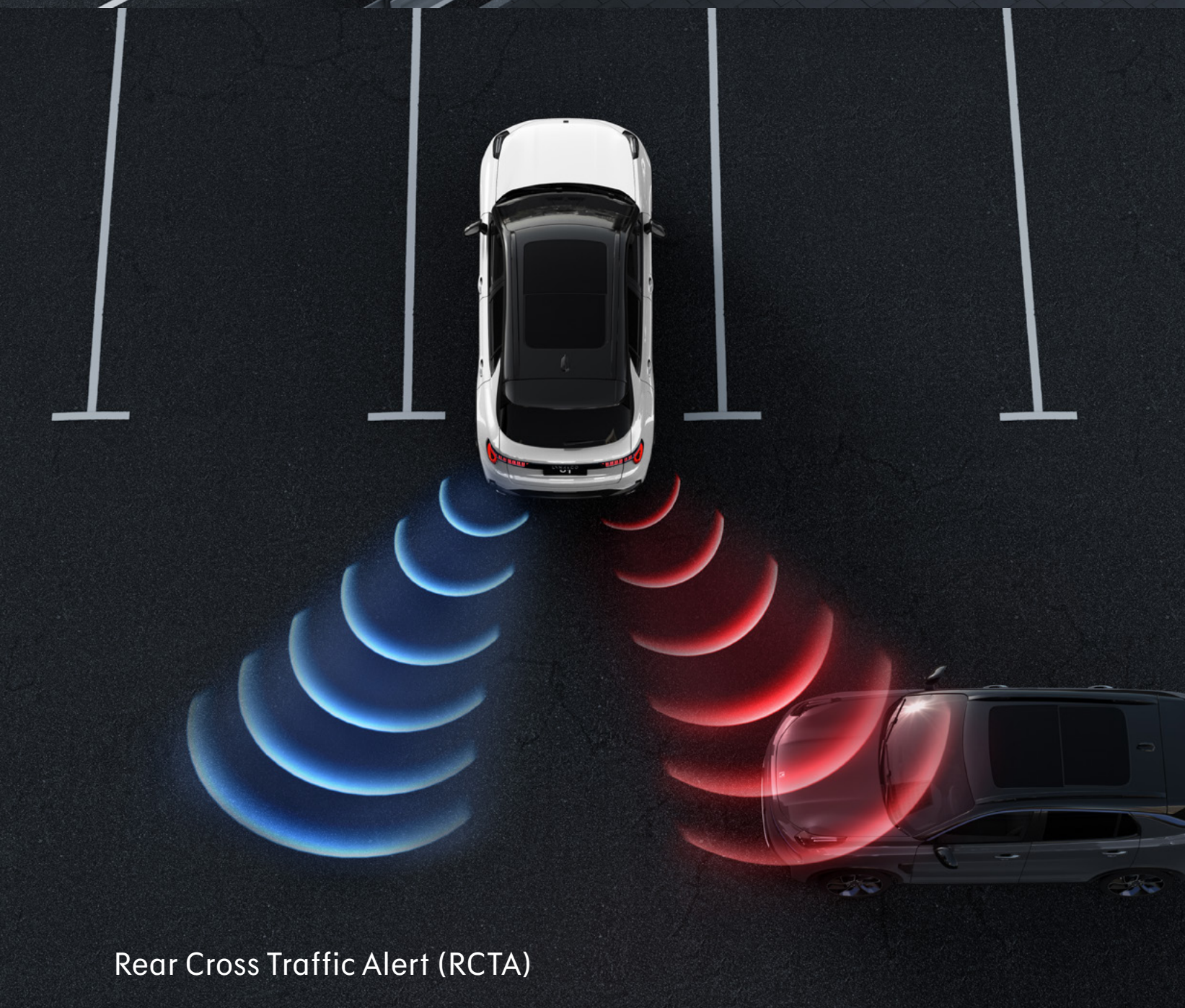
LYNK & CO



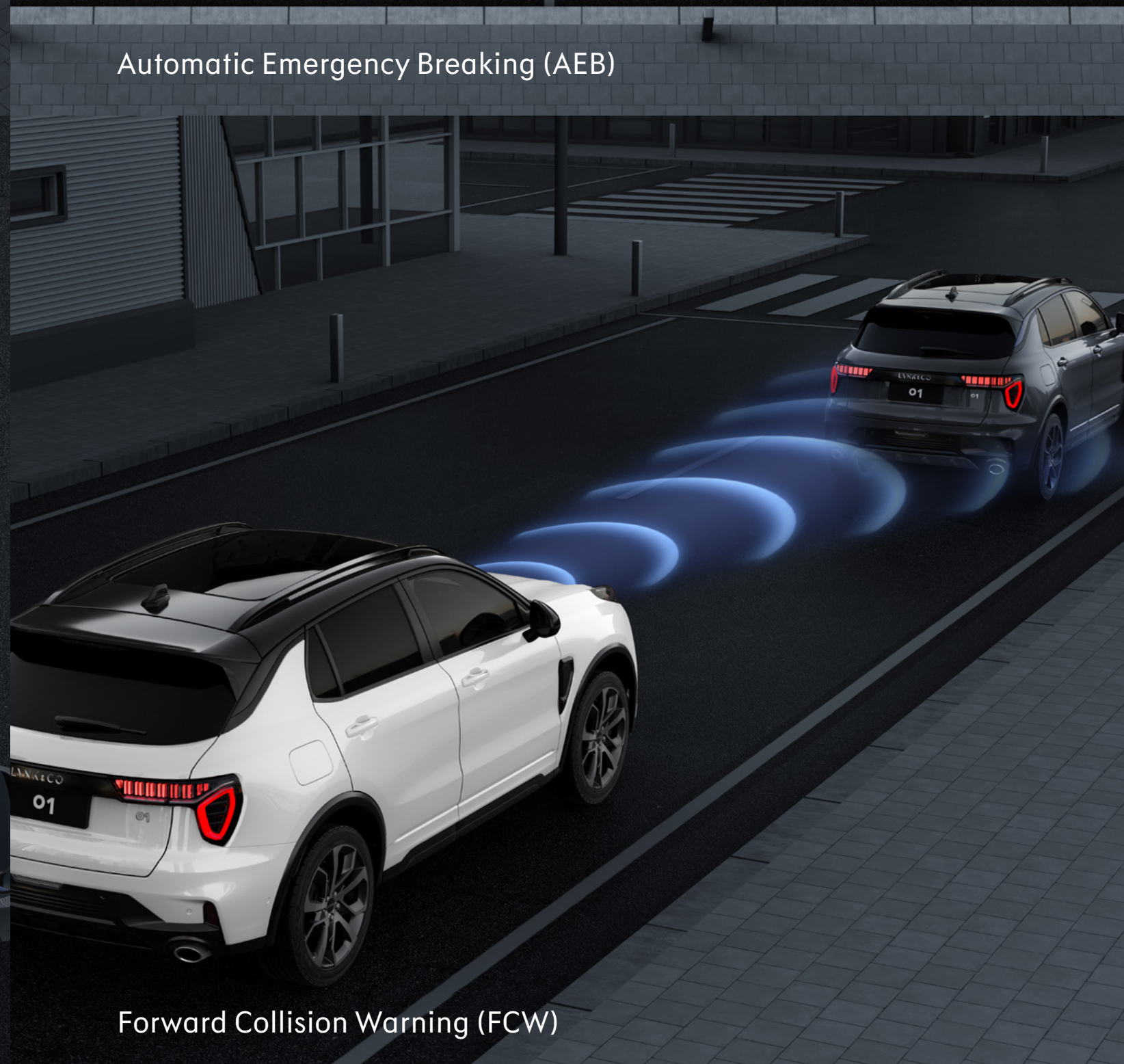
Highway Assist (HWA)



Automatic Emergency Breaking (AEB)



Rear Cross Traffic Alert (RCTA)



Forward Collision Warning (FCW)

Advanced Safety for Every Journey

FOR —
PEOPLE

At Lynk & Co, safety is a non-negotiable priority – since its inception, the brand has adhered to the highest standards of safety and protection. The 01 features forward-thinking safety technology, ensuring that every drive is as secure as enjoyable. By building on Geely Holding's global safety innovations, the 01 combines both active and passive safety features to offer a high level of protection.

The Lynk & Co 01 is equipped with an array of intelligent technologies as standard, powered by a high-precision comprehensive camera system. The Advanced Driver Assistance Systems (ADAS) work seamlessly to support the driver to maintain safe driving conditions and react swiftly to potential hazards. ADAS features available on the 01 include Intelligent Cruise Control, Lane Keeping Assistance, Lane Change Assistance, Autonomous Emergency Braking, Front and Rear Collision Mitigation Support, Rear Cross Traffic Alert, and Door Open Warning.

Electronic stability control and dynamic torque vectoring systems ensure balance and control, further supporting the driver in challenging driving conditions, while Blind Spot Monitoring aids the driver when manoeuvring the vehicle.

LYNK&CO

Sustainability



Driving a Greener Future: Sustainability at the Core, and More

FOR —
IMPACT

Sustainability is central to Lynk & Co's mission, and the new 01 exemplifies this commitment. Both trims incorporate recycled materials throughout the interior, including upholstery, carpets, and trim. Artificial leather is used in the seats and dashboard, providing a premium, eco-friendly experience. The More model uses a solvent-free polyurethane material with a recycled textile base layer, while the Core model features ECONYL®, a 100% recycled material made from fishing nets and other plastic waste.

The uniquely efficient plug-in hybrid powertrain offers up to 75 km of pure electric driving for daily commutes with zero tailpipe emissions and balances performance with environmental responsibility while serving as a bridge to a fully electric future.

Lynk & Co's commitment to sustainability goes beyond a single product; it encompasses the entire brand ethos. The new 01 is produced using 100% renewable electricity that powers not only the brand's manufacturing sites but also its offices and Clubs throughout Europe. Lynk & Co's Clubs actively promote

sustainable living by offering a curated selection of inspiring products from independent partner brands. These Clubs foster communities centered on sustainable practices, reflecting the brand's dedication to creating a greener future for all.

Looking ahead, Lynk & Co aims to reduce the life cycle footprint of its cars by 50% by 2030 and achieve net-zero emissions across the business by 2040. At Lynk & Co, the commitment to making a positive impact is clear. The brand believes in leaving the world a better place through its commitment to inclusion, diversity, and sustainability. Together with its community, Lynk & Co aims to pave the way for a future where mobility transcends mere transportation. The brand envisions a future where mobility is not just about getting from A to B but an integral part of a seamless, sustainable, and inclusive journey for all.

LYNK&CO

Car-Sharing





LYNK & CO

FOR —
PEOPLE

Shared Mobility, Shared Responsibility: Driving a More Sustainable Future

The Lynk & Co 01 and its car-sharing functionality were born together, setting a precedent that now spans across all the brand's products. This commitment to car-sharing remains central to Lynk & Co's mission to change the future of mobility—for people, for progress, and for impact. Every Lynk & Co model is designed with a car-sharing function, accessible via the Lynk & Co app. This innovative feature allows users to safely share their vehicles with others while earning money in the process. For Lynk & Co, car-sharing is central to community building, promoting a more sustainable use of cars already on the road and increasing access to mobility for everyone.

The new Lynk & Co 01 continues to embody this philosophy by seamlessly integrating this car-sharing app. It empowers every owner and subscriber to share their vehicle when it's not in use, fostering a more efficient and sustainable approach to car use.

LYNK&CO

Q&A





Nicolas López Appelgren

Chief Executive Officer, Lynk & Co International

How does the introduction of the new Lynk & Co 01 align with the company's broader vision and long-term objectives?

The new Lynk & Co 01 is central to our long-term business strategy across Europe. This version represents more than just cosmetic updates - it's a strategic evolution of our product portfolio, driven by customer feedback. As we continue to evolve our business model and expand into new markets, the 01 plays a key role in addressing diverse customer needs. It reinforces our commitment to providing flexible, sustainable mobility solutions, all while adapting our business to meet the changing demands of the future of mobility.

What role do plug-in hybrids play in Lynk & Co's expanding product portfolio?

The Lynk & Co 01 has always been a pivotal model, and as we expand our product portfolio, plug-in hybrids continue to play a crucial role. While we are committed to full electrification in our long-term strategy, the infrastructure challenges in several European markets make plug-in hybrids a practical and necessary solution. These PHEVs offer the best of both worlds: flexibility for drivers and a meaningful step toward a greener future. By bridging the gap between combustion engines and fully electric vehicles, plug-in hybrids enable us to meet diverse market demands. As we adapt to evolving market conditions, PHEVs remain an essential part of our strategy.

How does sustainability influence the development of the new Lynk & Co 01 and shape the brand's future strategy and purpose?

Sustainability is central to the new Lynk & Co 01 and shapes our brand's future strategy and purpose. We are committed to minimizing our environmental impact and continuously seek ways to reduce our footprint across the entire business and supply chain. As we expand our product portfolio, we focus on solutions that align with our sustainability goals, including plug-in hybrids that offer flexibility while bridging the gap to full electrification. Our sustainability efforts extend beyond just the car itself; through our car-sharing platform, we enable more efficient vehicle use.

Q&A



Q&A with David Green

Vice President of Strategy,
Product & Offer at Lynk & Co International

How does the new plug-in hybrid powertrain bridge the brand toward a fully electrified future?

The new plug-in hybrid powertrain in the 01 represents an important step toward enabling the transition to zero emission transport. It offers drivers the flexibility of gasoline for longer journeys while enabling urban driving with zero tailpipe emissions via the electric motor. This powertrain serves as a bridge, making the transition to fully electric models smoother as we progress toward our long-term goal of zero-emission vehicles.

What makes the new electrical architecture and chipset upgrades such a game-changer for the 01?

The new electrical architecture in the 01 is a major leap forward, powered by the Qualcomm Snapdragon® 8155 chipset. This chipset offers a significant boost in processing power, which translates into faster load times, smoother performance, and enhanced features throughout the vehicle. Whether it's using the infotainment system, leveraging the car's 5G connectivity, or interacting with the driver interface, the entire experience is seamless and intuitive. In addition, the new architecture supports over-the-air (OTA) updates, ensuring the Lynk & Co 01 stays updated with the latest features and improvements.

What is so special about the new plug-in hybrid powertrain, and how does it position Lynk & Co ahead of the competition?

The new powertrain is a breakthrough for Lynk & Co and is a key differentiator in today's competitive landscape. With a combined output of 276 hp and 535 Nm of torque, it offers a dynamic yet responsive driving experience. What sets it apart is the balance between performance and efficiency - achieving just 0.9 litres/100 km, making it one of the most fuel-efficient SUVs available.

But what truly makes this powertrain special is how it integrates into our broader strategy. It's not just about creating a powerful hybrid - it's about preparing for the future of mobility. This powertrain showcases Lynk & Co's ability to innovate while remaining sustainable, reinforcing our commitment to electrification.

LYNK&CO

Fact Sheets



Fact Sheet: Technical Details & Engineering



Fact sheets New 01

Dimensions & Weight

Trim level	Core	More
Length	4545 mm	4545 mm
Width (Unfolded mirrors)	1952 mm	1952 mm
Height (in running order)	1694 mm	1694 mm
Wheelbase	2734 mm	2734 mm
Curb weight	1830 kg	1898 kg

Powertrain

Trim level	Both Core and More
Engine name	1.5TD (Turbo Direct Injection)
Engine type	In-line, 4 cyl. Turbocharged
Total powertrain (gasoline+electric motor) max torque	535 Nm
Total powertrain (gasoline+electric motor) max power output	206 kW (276 hp)
Transmission	3 Speed Hybrid specific - 3DHT Pro
Battery capacity	17.7 kWh
Electric range combined driving	75 km*
Fuel consumption-combined driving (weighted)	0,9 l/100 km*
Transmission Emissions CO ₂ combined driving (weighted)	20 g/km*

Performance

Acceleration 0-100	7.7 s
Top Speed	200 km/h

Drivetrain

Front-wheel drive (FWD) with electronic traction control
--

Fact Sheet:
Software & User Experience



Fact sheets New 01

Infotainment
system & Navigation

Trim level	Core	More
12 V power outlet in the trunk	•	•
5G Network	•	•
Apple Carplay and Android Auto (Q1 2025 via OTA)	•	•
Appstore (Spotify, Audible, TuneIn, HERE Maps, games and more)	•	•
Audio - 8 speakers	•	
Audio - 10 speakers from Infinity by Harman (incl. subwoofer)		•
Bluetooth	•	•
Car Sharing - Car sharing service with the LYNK & CO Community	•	•
Center display - 15.4"	•	•
Driver display - 10.2"	•	•
Interior selfie camera		•
Navigation - Maps Coverage (32 European countries)	•	•
Navigation - Real-Time Data (Live traffic, parking availability, and weather updates)	•	•
OTA (Over-The-Air updates)	•	•
Processor - Qualcomm Snapdragon® 8155 chipset	•	•
USB ports - 2 type C in front, 2 type C in rear	•	•
Voice Assist - Natural speech recognition with enhanced multi-lingual support	•	•
Wi-Fi hotspot	•	•
Wireless Phone Charger (WPC)		•

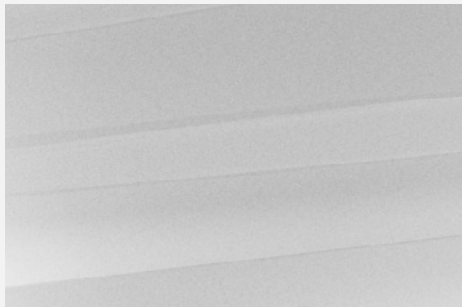
Fact Sheet: Exterior & Interior Design



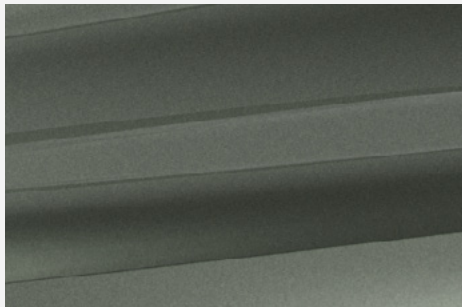
Fact sheets New 01

Exterior

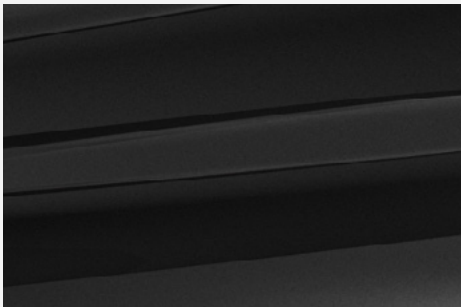
Trim level	Core	More
Headlights - Full LED with Adaptive Bending Lights		•
Taillights - New rear LED design with sequential turn signals	•	•
Grille - Gloss black grille	•	•
Wheels	19-inch alloy	20-inch alloy
Panoramic sunroof - Openable		•
Color Options - Crystal White (Metallic)	•	•
Color Options - Sparkling Black (Metallic)	•	•
Color Options - Mineral Green (Metallic)	•	•
Color Options - Mineral Green & Crystal White with black contrast roof and black rims		•



Crystal White (Metallic)



Mineral Green (Metallic)

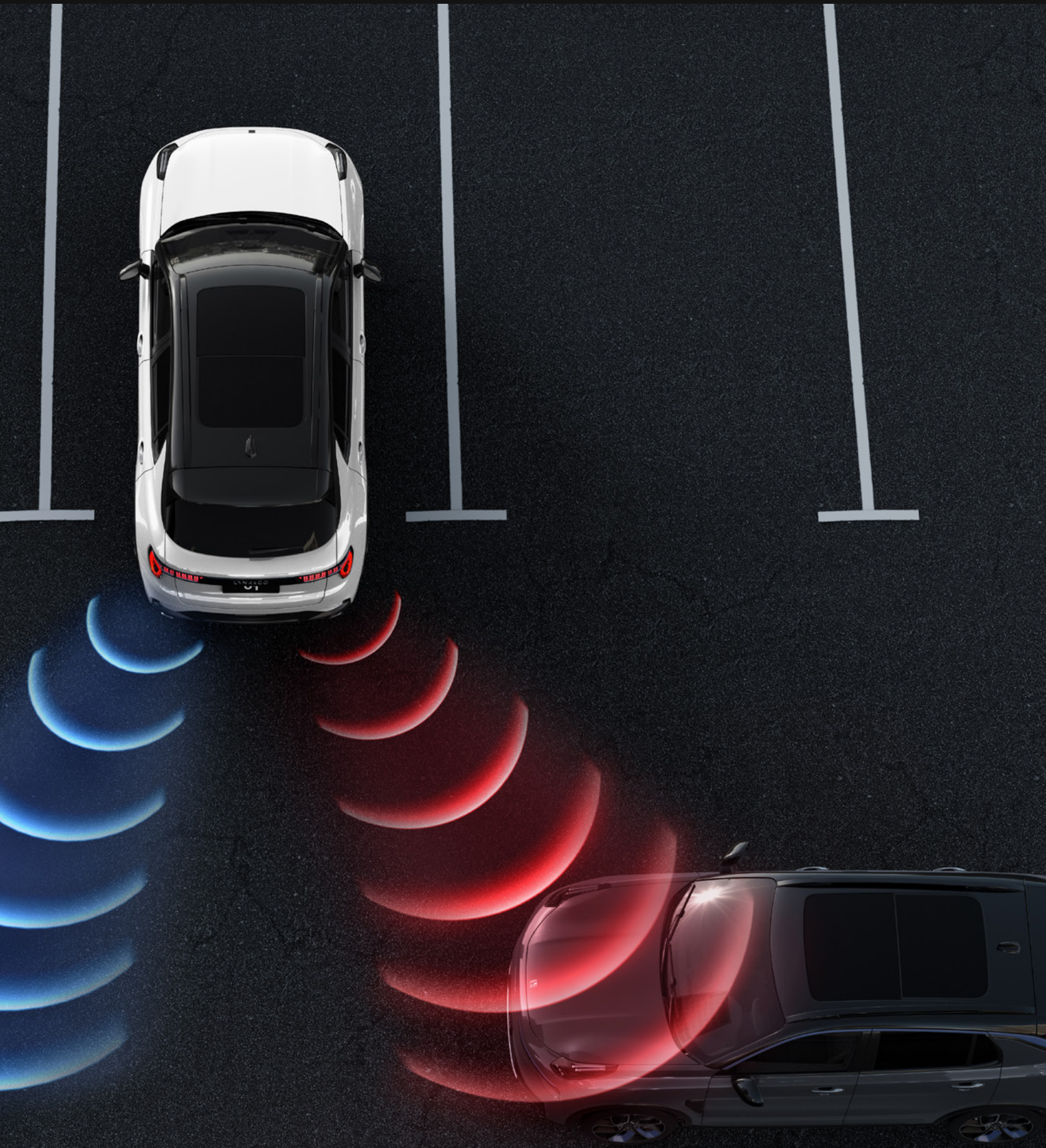


Sparkling Black (Metallic)

Interior

Upholstery - ECONYL® (100% recycled material)	•	
Upholstery - Artificial leather (solvent-free PU with 55% recycled base-layer)		•
Ambient Lighting - Multi-color ambient lighting with customisable modes		•
Seating - Power-operated driver's seat with memory function		•
Seating - Heated front seats	•	•
Rear cargo space - 460 litres (1,339 litres with seats folded)	•	•
Cabin features multiple storage areas and ergonomic seating for all passengers	•	•

Fact Sheet:
Safety & Assistance (1/2)



Fact sheets New 01

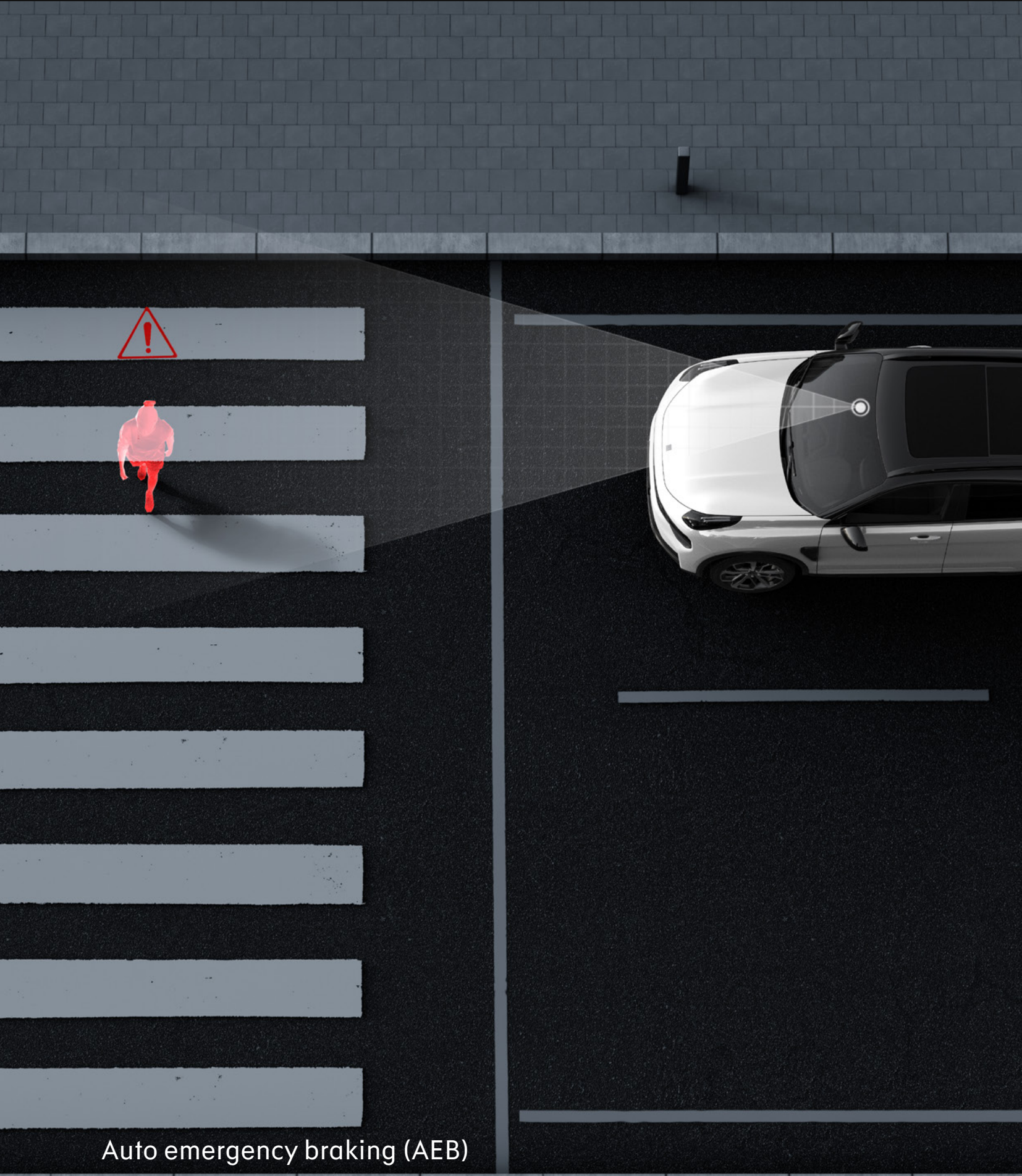
Driver assist
functions

Trim level	Core	More
Adaptive cruise control (ACC)	•	•
Auto Emergency Braking (AEB)	•	•
Blind Section Detection (BSD)		•
Camera - 360 Camera		•
Camera - Rear view camera	•	
Collision Mitigation Support Rear (CMSR)		•
Door Open Warning (DOW)		•
Driver Alert Control (DAC)	•	•
Emergency Lane Keep Assist (ELKA)	•	•
Highway Assist (HWA)	•	•
Intelligent Speed Assist (ISA)	•	•
Lane Change Assistance (LCA)		•
Lane Departure Warning (LDW)	•	•
Lane Keep Assistance (LKA)	•	•
Max Speed Overspeed Warning	•	•
Park Assistance - Front and rear parking sensors	•	•
Rear Crossing Traffic Alert (RCTA)		•
Traffic Sign Recognition (TSR)	•	•

Others

AC charger cable Model 2, (for home usage, 230 V)	•	•
AC charger cable Model 3 (for public and wallbox usage)	•	•
First aid kit	•	•
Tire repair kit	•	•

Fact Sheet:
Safety & Assistance (2/2)



Fact sheets New 01

Passive Safety

Active safety

Security

Trim level	Core	More
Airbag - Driver	•	•
Airbag - Far side airbag (between front seats)	•	•
Airbag - Front driver and passenger side airbags	•	•
Airbag - Front passenger (with deactivation switch)	•	•
Airbag - Side curtain airbags	•	•
Tire pressure warning with display	•	•
Anti-theft alarm with interior monitoring and tilt sensor	•	•
Auto door lock	•	•
B-call (Break down rescue call)	•	•
E-call (Emergency rescue call)	•	•
Electronic child safety lock	•	•
EV low speed warning sound	•	•
Event Data Recorder (EDR)	•	•
Phone as key (digital key)	•	•
Remote control keys - 2 units	•	•
Anti Rolling Program (ARP)	•	•
Anti-lock Brake System (ABS)	•	•
Brake Assist (BA)	•	•
Electronic Brakeforce Distribution (EBD)	•	•
Electronic Stability Control (ESC)	•	•
Hill Descent Control (HDC)	•	•
Hill Start Assist control (HSA)	•	•
Traction Control System (TCS)	•	•

LYNK&CO

Biographies





Nicolas López Appelgren

Chief Executive Officer, Lynk & Co International



Nicolas López Appelgren is the Chief Executive Officer of Lynk & Co International, a dynamic leader with over 25 years of expertise in the automotive industry.

Prior to joining Lynk & Co, Nicolas drove impactful business transformations across diverse markets at Volvo Cars, including Belgium, Sweden, the UK, the US, and several countries in Latin America. Throughout his tenure, Nicolas led global teams in the areas of marketing, product marketing, customer care and retail operations; pioneering cutting-edge processes that fortified global partnerships.

While prioritizing results, Nicolas also champions Inclusion and Diversity, shaping a corporate culture that fosters innovation and success at every level. Through his result-driven leadership, he is steering Lynk & Co toward a future of innovative solutions with a strong emphasis on sustainable mobility.

Nicolas is a graduate of the Lund University in Sweden, earned an additional degree at the Universidad Complutense in Madrid, and a bachelor's degree in information technology from the University of Gothenburg.



David Green

Vice President of Strategy, Products & Offers,
Lynk & Co International



David Green, Vice President of Strategy, Products & Offers at Lynk & Co International, is pivotal in shaping the brand's product portfolio, seamlessly integrating innovative vehicle technologies, connected experiences, and market-leading offers. His strategic initiatives cover new and used cars as well as B2B projects, all aimed at driving Lynk & Co's growth, market impact, and innovation.

Green's career spans the entire automotive value chain and has enabled him to pioneer innovative business models and technologies. Notably, he contributed to the development of Lynk & Co's subscription model and patented the digital key concept for peer-to-peer car sharing. Before joining Lynk & Co, Green led e-commerce and urban mobility initiatives at Volvo Cars. His passion for technology, innovation and car sharing drives his commitment to enhancing customer experience, making mobility more accessible and sustainable.

With a visionary approach, Green focuses on crafting Lynk & Co's product strategies and offerings. By continually adapting to market demands and anticipating competitive trends, he provides customers with a seamless and engaging driving experience. His efforts in developing the right products and offers are crucial in maintaining and advancing Lynk & Co's competitive edge in the automotive industry.



LYNK & CO



Company Description

Lynk & Co is more than a car company; with a portfolio of high-quality vehicles, it offers flexible mobility solutions that put customers first. Founded in 2016 and headquartered in Gothenburg, Sweden, Lynk & Co employs 700 people from 45 different nations across its seven European entities. Lynk & Co is dedicated to building communities, enhancing accessibility, and embracing change. As a leader in the car sharing movement, the brand drives progressive practices and continuously pushes boundaries for a better future.

Lynk & Co employs a dynamic, dual-distribution business model including direct sales operations and strategic collaborations. The company owns operations in seven core European markets - Sweden, Netherlands, Germany, Spain, Italy, France & Belgium - offering consumers an intuitive digital buying experience in addition to its twelve unique Clubs located in key markets. In 2024, Lynk & Co plans to extend its presence to 22 European markets via importers, while also expanding its retail footprint through selected retail partners across Europe.

Each Lynk & Co Club is a vibrant representation of the brand, offering in-person experiences that go beyond cars. These spaces bring the Lynk & Co world to life, inviting visitors to explore the brand, attend events, or simply enjoy a coffee. Through inspiring events and collaborations with like-minded partners, the Clubs foster community, inclusivity, and meaningful connections.

Combining bold design with cutting-edge connectivity, Lynk & Co delivers a forward-thinking driving experience. Leading the European portfolio is the iconic Lynk & Co 01 Plug-In Hybrid, celebrated for its efficiency, innovation, and

performance. The latest model introduces trim levels, more color options, and a new powertrain with enhanced performance. While plug-in hybrids continue to play a crucial role in the brand's product lineup, the 01 serves as a bridge to fully electric models and embodies Lynk & Co's dedication to innovation and flexible offers.

The Lynk & Co 02 is the brand's first fully electric car launched in Europe. Featuring an impressive 445 km range, the 02 showcases a sleek, striking exterior alongside interiors crafted from recycled materials. Developed with direct customer feedback, it stands as a milestone in the brand's journey toward full electrification. Together, the 01 and 02 reflect Lynk & Co's commitment to offering a product range designed to meet the varied needs of modern drivers while advancing responsible mobility in Europe.

Lynk & Co's sustainability vision is at the core of its mission, aiming to reduce the life cycle footprint of its cars by 50% by 2030 and achieve net-zero emissions by 2040. A key part of this strategy is the brand's award-winning car-sharing platform, which promotes more efficient use of vehicles by enabling users to share their cars. This not only reduces the number of parked cars but also opens more space for communities, creating people-centric and sustainable environments. Lynk & Co's dedication to sustainability is also rooted in inclusivity and diversity, ensuring that its mobility solutions are accessible to everyone. The brand is focused on shaping a future where transportation drives progress, empowers people, and creates a lasting, positive impact on society and the planet.



Press Contacts

Europe

Cami Silva
Vice President, PR & Communications,
Lynk & Co International
Cami.Silva@lynkco.com

Sweden

Cecilia Hedlund
Communications Manager Sweden,
Automotive & Sustainability Europe,
Lynk & Co International
Cecilia.Hedlund@lynkco.com

Netherlands & Belgium

Mehtap Güngörmez
PR Manager, Netherlands & Belgium,
Lynk & Co International
Mehtap.Gungormez@lynkco.com

Germany

Paulina Deisler
PR Manager Germany &
Corporate Affairs Manager Europe,
Lynk & Co International
Paulina.Deisler@lynkco.com

Italy

Carlotta Zuccarelli
PR Manager, Italy,
Lynk & Co International
Carlotta.Zuccarelli@lynkco.com

France

Mira Taharoui
PR Manager, France,
Lynk & Co International
Mira.Taharoui@lynkco.com

Spain

Beth Fernandez
PR Manager, Spain,
Lynk & Co International
Beth.Fernandez@lynkco.com

Lynk & Co Design

Annica Andersson
Head of PR & Communication,
Lynk & Co Design
annica.andersson@geelydesign.com

China

Menghua Pan
Brand Communication Manager,
Lynk & Co China
Menghua.Pan@lynkco.com

**Southeast and Central Asia,
Middle East, Latin-America**

Derek Peng
Head of Marketing,
Lynk & Co Overseas
Bing.Peng@lynkco.com

LYNK & CO

press.lynkco.com

