



A CONTEMPORARY
HAVEN IN THE
HEART OF COIMBRA



TIVOLI
COIMBRA
HOTEL

tivolihotels.com



W E L C O M E T O T I V O L I C O I M B R A

Coimbra, in the heart of Portugal, was the medieval capital for more than a hundred years. Monumental, inspiring and surprisingly charming, Coimbra sets the stage for an unbeatable city break with cultural thrills, riverside relaxation and stately architecture. Centrally located near museums, monuments and shopping, Tivoli Coimbra is your key to unlocking some of Europe's most underrated and magnificent scenarios. Relax with sophisticated comfort and the perfect view of multicoloured houses draped over hills, while taking advantage of spacious layouts and refined amenities.

Embark on unforgettable journeys around Coimbra and the Mondego River with the guidance of our Destination Ambassadors. Sit back in stylish surroundings and enjoy our trendy new coffee shop, Simone. With extensive conference facilities, state-of-the-art business centre and relaxed dining concepts, Tivoli Coimbra invites guests to blend business and leisure with a vibrant urban pulse.

L O C A T I O N

Tivoli Coimbra Hotel is located in central Coimbra, a 90-minute drive from Porto Airport and a two-hour drive from Lisbon Airport.

GPS: N 40° 12' 51,13", W 8° 25' 59,24"

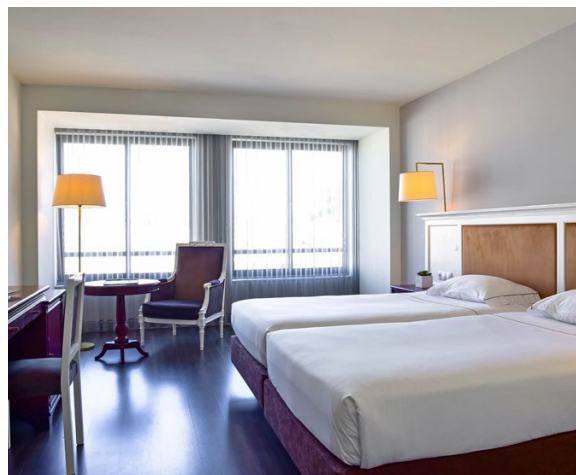
A C C O M M O D A T I O N

100 Rooms and Suite, including:

75 Standard Rooms
19 Superior Rooms
5 Family Rooms
1 Suite

STANDARD ROOM

Located across floors 1 to 4, the Standard Rooms present an area of around 25 sqm and contemporary decoration with a work station and a fully equipped bathroom. With a sense of distinct comfort in mind, all these rooms are equipped with air conditioning, LCD TV, direct telephone line and WiFi.



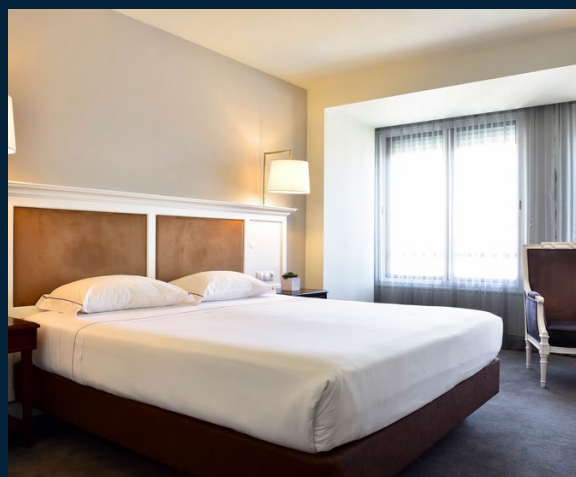
SUPERIOR ROOM

Located between the fifth and top floor, the Superior Rooms present an area of around 25 sqm and contemporary decoration with a work station and a fully equipped bathroom. Relish in graceful relaxation at these comfortable rooms, equipped with air conditioning, LCD TV, direct telephone line and WiFi.



FAMILY ROOM

Located from floors 2 to 4 with fantastic views over the hotel facade, the Family Rooms present an area of around 40 sqm with contemporary decoration. Additional space to create new memories together featuring a bedroom with work station, a living area with LCD TV and a fully equipped bathroom. All Family Rooms are also equipped with air conditioning, direct telephone line and WiFi.



SUITE

Located between the fifth and top floor with stunning views over the hotel facade, the Suite presents an area of around 70 sqm with contemporary decoration. Unwind at an expansive and elegant space featuring two bedrooms with work station, living room with dining area and a fully equipped bathroom. This Suite is also equipped with air conditioning, LCD TV, direct telephone line and WiFi



ROOM TYPES SUMMARY

TYPE OF ROOM	AREA	TYPE OF BED	MAXIMUM OCCUPANCY
Standard Room	25m ²	19 Double (Double Bed)	2+1
		6 Triple (Double Bed + 1 Individual Bed)	
		45 Double (Twin Beds)	2+1
		3 Triple (3 Individual Beds)	
		2 Single (Individual Beds)	1
Superior Room	25m ²	15 Double (Double Bed) 2 Triple (Double Bed + 1 Individual Bed) 2 Double (Twin Beds)	2+1
Family Room	40m ²	5 Double	2+2
Suite	70m ²	1 Double	2+2

ROOM FACILITIES

- Air conditioning
- Wireless Internet
- Safe Cofre
- Minibar
- Work desk
- Direct telephone
- LCV TV
- Nespresso coffee facilities

SURROUNDING ATTRACTIONS

- Shops – 5 minutes' walk
- Monastery of Santa Cruz – 5 minutes' walk
- City centre – 10 minutes' walk
- Monuments – 10 minutes' walk
- Museums – 10 minutes' walk
- Cinema – 10 minutes' walk
- Johanine University and Library – 20 minutes' walk
- Botanical Garden – 20 minutes' walk
- Portugal dos Pequenitos – 5 minutes' drive
- São Francisco Convent – 5 minutes' drive
- Santa Clara Convent – 5 minutes' drive
- Museum of Conímbriga and Roman Ruins – 30 minutes' drive

HOTEL FACILITIES

- Reception team (24 hours)
- Room Service (7:00 – 23:00)
- Valet and paid parking garage
- Complimentary WiFi
- Laundry service (on request)
- Non-smoking rooms
- Children's activity programme
- Car rental services
- Business Centre services
- Simone Coffee Shop
- Breakfast Room



RESTAURANTS & BARS

SIMONE COFFEE SHOP

A favourite haunt for local foodies and guests alike. Sit back in stylish surrounds and let our barista fix you up the perfect cappuccino. Our trendy new coffee shop offers artisan brew and quick fresh bites, including international and Portuguese fare. Grab a cold-pressed juice, homemade waffle or traditional Brazilian “brigadeiro” fudge balls in cool air conditioning or to takeaway.

Opening hours: 8:00 – 23:00



BREAKFAST ROOM

Rise and shine with international and Portuguese delights. Start the day with the ease of eclectic selection. Choose from fresh-baked breads and pastries, cold cuts, cheeses and more to create the perfect early meal.

Opening hours: 7:00 – 10:30





MEETINGS & EVENTS

Whether visiting Tivoli Coimbra for a corporate function or a low-key meeting, take advantage of a dedicated, highly experienced team at your service. Our five meeting rooms can accommodate up to 100 people and provide delicious Portuguese and international catering. Let our Team organise the right excursions to perfectly combine business and pleasure for unforgettable moments in Coimbra.

SUPPORT INFRASTRUCTURES

- 5 Meetings rooms equipped with the latest technology
- Reception facilities for groups

SERVICES AVAILABLE

- Complimentary WiFi
- Business Centre services
- Valet Parking

MEETING ROOMS

ROOM	W X L X H	AREA	BANQUET	COCKTAIL	SCHOOL	THEATRE	U SHAPE
Tivoli*	10.6 x 8.3 x 2.55	88m ²	50	120	36	100	35
Porto	15.4 x 6.1 x 2.65	94m ²	80	130	50	120	40
Sintra	5.6 x 6.7 x 2.65	37m ²	20	50	16	30	12
Mondego*	8 x 5.1 x 2.5	40m ²	-	-	-	-	-
Oriente	10.6 x 8.3 x 2.55	88m ²	50	100	36	100	35

*Natural light

H O T E L P O L I C I E S

CHECK-IN AND EARLY CHECK-IN

Check-in time is from 14:00 onwards. An early check-in is available, subject to a surcharge: if it occurs before 10:00, the previous night's full room rate will be charged; if check-in occurs after 10:00 and before 14:00, a surcharge equivalent to 50% of the previous night's room rate will be applied.

CHECK-OUT AND LATE CHECK-OUT

Check-out is until 12:00. Late check-out is available subject to a surcharge: If you check-out between 12:00 and 16:00, the equivalent to 50% of the following night's room rate will be charged. If you check-out after 16:00, that day's full room rate will be charged.

CREDIT CARDS

Tivoli Coimbra accepts the following credit cards: American Express, Visa, MasterCard, Dinners and JCB.

CHILDREN'S POLICY

Accommodation for children up to 12 years old is complimentary (one child per double room allowed). Food and Beverages for children up to 3 years old is complimentary. For children between 4 and 12 years old, a discount of 50% is applied.



TIVOLI
COIMBRA
HOTEL

Rua João Machado, nº 43000-226 Coimbra
T: (+351) 239 858 300 E: coimbra@tivoli-hotels.com
tivolihotels.com

DISCOVERY 