


ANANTARA
DOWNTOWN DUBAI
HOTEL

Anantara Downtown Dubai Hotel

Experience the vibrancy of Dubai with an immersive stay at Anantara Downtown Dubai Hotel.

Delight in the wonders of the city on the doorstep as you are enveloped in tranquil tropical refinement, just moments from Dubai Mall and the iconic Burj Khalifa.



Location

Anantara Downtown Dubai Hotel stands in the heart of Dubai city, five minutes from the Burj Khalifa and Dubai Mall.

The hotel is located in Business Bay, just 20 minutes by road from Dubai International Airport, with easy access to the city's endless attractions via Sheikh Zayed Road or the Dubai Metro.

Management:
Minor Hotels

General Manager:
Husam Malki
hmalki@anantara.com

Accommodation

Retreat into spacious convenience at the edge of Dubai's bustling centre when you select Anantara Downtown Dubai Hotel. Stay in your choice of 252 elegant rooms and suites with stunning cityscape and Burj Khalifa views.

Floor-to-ceiling windows and private balconies keep you connected to the dynamic city at your fingertips, while rich furnishings and Italian marble bathrooms bring a touch of finesse to your midtown home from home.

All suites come with generous balconies and separated living spaces for maximum comfort and convenience, while the Presidential Suites with Pool offer a private outdoor plunge pool for the ultimate in city pleasure.





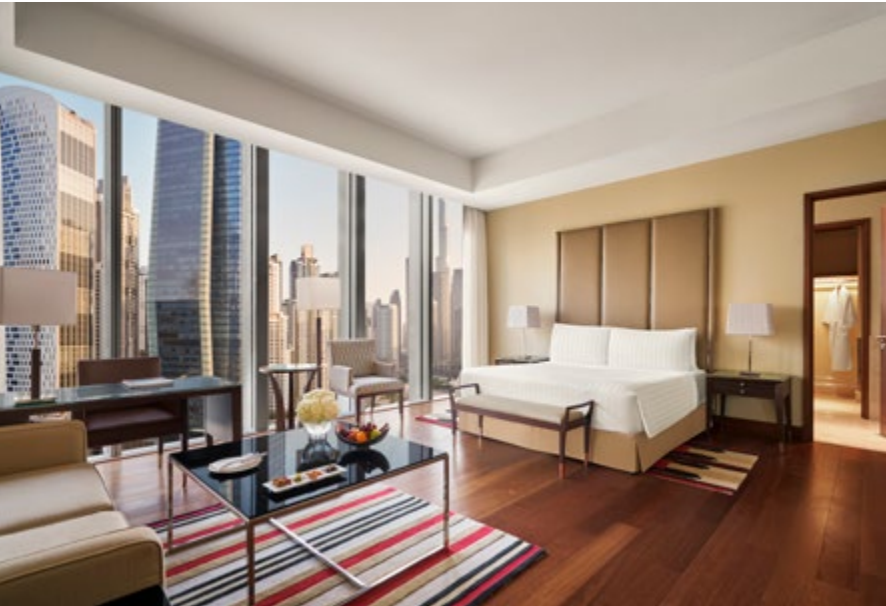
Premier City View Room

Enjoy uninterrupted cityscape views through floor-to-ceiling windows. Take time to relax on the comfortable furnishings of your generously sized room. Recharge within the soft sheets of your large king or twin bed, ready for the possibilities of another Dubai day.

Premier Pool View Room

Ease away the day in the full-length tub of your Italian marble bathroom. Peer out to pool and city views across your downtown home. Sleep peacefully in your soft king or twin bed. Taste your freshly poured morning coffee and contemplate the adventures ahead.



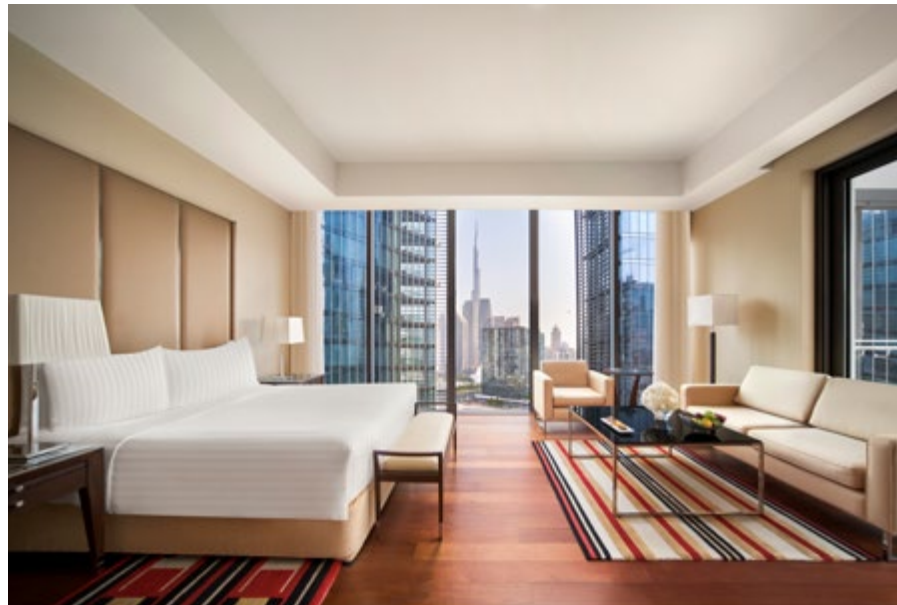


Deluxe Burj Khalifa View Room

Look up to the world's most spectacular tower from the comfort of your luxurious bed, living area, and naturally-lit Italian marble bathroom. Sleep, soak, rest, and connect with complimentary high-speed Wi-Fi as you prepare for more incredible exploring.

Burj Khalifa View Suite

Gaze across to the Burj Khalifa from the refreshing breeze of your private balcony, or through the floor-to-ceiling windows of your expansive suite. Choose enhanced comfort and total convenience to relax, entertain, or work in downtown Dubai.





Anantara Burj Khalifa View Suite

Step onto your private balcony with views of the iconic Dubai skyline and Burj Khalifa. Relax, work, or entertain in the expansive space of your suite. Soak in the tub of your Italian marble bathroom or refresh in the flowing water of your separate shower.

Presidential Suite with Pool

Ease away the day in your balcony plunge pool overlooking Dubai's spectacular skyline. Relax in your ensuite bedroom, spacious living area, private dining space, or Italian marble bathroom. Enjoy ultimate refinement in your exclusive, naturally-lit, top-floor suite.



Room and suite features:

- Flat-screen television
- Complimentary WiFi
- Floor-to-ceiling windows or private balcony
- Minibar, a selection of spirits and homemade snacks
- Individually controlled air conditioning
- Coffee machine and tea making facilities
- Telephone
- Hair dryer
- Safe box
- Laundry service
- Complimentary Wi-Fi throughout the hotel



Room type	King	Twin	Total	Bedding	Area (sq.m)	Area (sq.ft)	Max room occupancy
Premier City View Room	90	24	114	King / Twin	52	560	2 + 1
Premier Pool View Room	77	4	81	King / Twin	52	560	2 + 1
Deluxe Burj Khalifa View Room	27	2	29	King / Twin	52	560	2 + 1
Burj Khalifa View Suite	19	-	19	King	133	1296	2 + 1
Anantara Burj Khalifa View Suite	7	-	7	King	184	1981	2 + 1
Presidential Suite with Pool	2	-	2	King	235	2530	2 + 1

Dining



Nine7One

Choose from the finest tastes from Arabia, Asia, and the West. Take a seat in our refined indoor space with show kitchen, or step out to the poolside courtyard to dine in the sun, or under the stars. Taste the world from our delicious buffet and speciality feasts.

Opening hours: 6.30 am to 11.30 pm

Cuisine: International All-day dining

Capacity: 148

Kimura-ya

Experience the flavours of Japan in the heart of Dubai. Design your dining from the curated menu of Chef Kohei Kobayashi in the cutting-edge interiors of Mayuka Kojima. Izakaya-style dining, without borders, from the first Kimura-ya restaurant in the UAE.

Opening hours: 12:00 pm to 12:00 am

Cuisine: Japanese

Capacity: 60





Punjab Grill

Immerse yourself in the lavish flavours and fragrances of the Punjabi Royal Court in the open kitchen of our speciality restaurant. Sample small plates and rich curries as master chefs bring innovation to tradition and showcase the bold and the balance of Indian cuisine.

Opening hours: 11.30 am to 11.30 pm

Cuisine: Indian

Capacity: 70

The Lobby Lounge

Fresh brews and handcrafted pastries are served in our plant-filled space where you can grab and go or pause and linger. Drop in any time to refuel or quench your thirst and find a friendly team member happy to meet your needs.

Opening hours: 24 hours

Cuisine: Light bites, high tea, drinks, and snacks

Capacity: 26





In Room Dining

Dine at your convenience in the privacy of your own room or suite and enjoy your meal with spectacular cityscape views in a space that is completely yours. Order any time, night or day, and have your favourite dishes and drinks delivered directly to your door.

Opening hours: 24 hours

Lobby Bar

Gather with colleagues or friends in a curated green space that oozes relaxation. Select from the top shelf, share stories and unwind in our oversized chairs that welcome you in from the rush of the city. Live music and expertly crafted cocktails will ease your evening until bed beckons.

Opening hours: 5.00 pm to 2.00 am
Capacity: 20



Pool Bar

Both adventurous and conservative tastes are catered for in our tropical poolside haunt. Graze on guilty pleasures from your lounge, or pull up a stool to listen to live music and sip on creative coolers.

Meetings and Events

Hold your corporate event or business meeting at a prestigious downtown address.

With space for up to 550 delegates in our Mirage, and 8 meeting rooms + executive boardroom for a variety of company gatherings, Anantara Downtown Dubai is ideal for team building, annual reviews and board meetings.

Unique events can be hosted poolside or in the courtyard with Burj Khalifa views for up to 100 people. State-of-the-art technology and gracious hospitality enhance every event.





CAPACITY CHART

Rooms	Cabaret	Theatre	Classroom	U-Shape	Boardroom	Banquet/ Seated	Area (sq.m)	Area (sq.ft)	Height (m)
Mirage	256	550	340	-	96	320	558	6006	6,5
Mirage 1	64	120	63	40	34	80	195	2099	6,5
Mirage 2	72	180	84	36	44	90	168	1808	6,5
Mirage 3	72	180	84	40	44	110	195	2098	6,5
Meeting Room 1	-	-	-	-	8	-	38	409	2,7
Meeting Room 2	-	-	-	-	8	-	31	334	2,7
Meeting Room 3	-	-	-	-	8	-	37	398	2,7
Meeting Room 4	25	40	-	-	20	30	70	753	2,7
Meeting Room 5	-	-	-	-	6	-	31	334	2,7
Meeting Room 6	-	-	-	-	19	-	51	549	2,7
Meeting Room 7	-	-	-	-	6	-	24	258	2,7
Meeting Room 8	20	25	-	-	19	-	50	538	2,7
Executive Boardroom	40	70	-	-	30	50	125	1345	2,7
Courtyard	-	-	-	-	-	100	-	-	-
Poolside	-	-	-	-	-	100	-	-	-
Yoga Deck	-	-	-	-	-	50	-	-	-

Anantara Spa

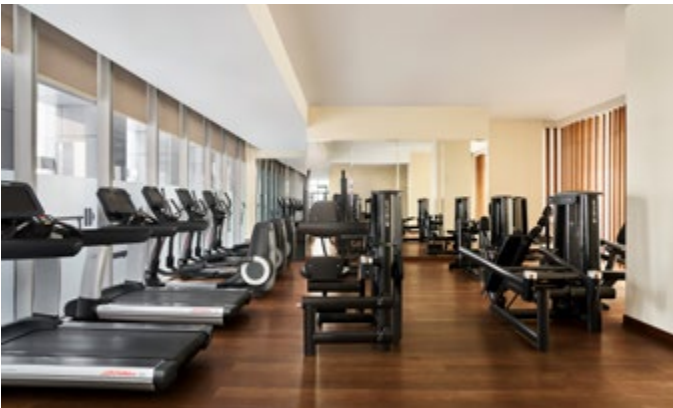
Indulge in a carefully crafted journey of relaxation at Anantara Spa.

Revive, refresh, and rejuvenate with signature treatments from talented therapists in the heart of downtown Dubai. Soothe your mind, body, and soul, and take a new freshness into your day.

Luxurious indoor treatment rooms

Opening hours: 11.00 am to 8.00 pm





Recreation and Leisure

Take time to make the most of our in-house leisure facilities throughout your stay.

- Temperature-controlled outdoor pool
- Anantara Spa
- Fully-equipped fitness centre
- Yoga deck

POOL

Opening hours: Sunrise to Sunset (lifeguard on duty 7.00 am to 9.00 pm)
Pool bar: 11.00 am to 7.00 pm (alcohol service after 12.00 noon)

FITNESS CENTRE

Opening hours: 24 hours



Other

Anantara Downtown Dubai Hotel is only a 20-minute drive from Dubai International Airport and 45 minutes from Al Maktoum International Airport.

Flight Services: Dubai International Airport (DXB) and Al Maktoum International Airport (DWC) offer direct and connecting flight services to destinations all over the world.

Voltage: 220 - 240 AC, 50 Hertz

Currency: UAE Dirham (AED)
US\$ 1 = AED 3.67 fixed rate

Time Zone: GMT plus 4 hours

Climate: The United Arab Emirates has a desert climate, characterised by hot, sunny summers and mild winters with very little rain. Natural fibres and breathable clothing are recommended. Temperatures range from 17°C to 26°C in winter and 30°C to 42°C in summer.



ANANTARA DOWNTOWN DUBAI HOTEL

P.O. Box 71847, Business Bay, Dubai, United Arab Emirates
T +971 4 444 1444 | E downtown.dubai@anantara.com | R reservations.adtd@anantara.com

ANANTARA.COM

UNFORGETTABLE JOURNEYS