



WELCOME

ACCOMMODATION

RESTAURANTS & BARS

LEISURE & WELLNESS

EXPERIENCES

MEETINGS & EVENTS

Unforgettable urban luxury



ANANTARA
THE MARKER DUBLIN
HOTEL



[WELCOME](#)

[ACCOMMODATION](#)

[RESTAURANTS & BARS](#)

[LEISURE & WELLNESS](#)

[EXPERIENCES](#)

[MEETINGS & EVENTS](#)

WELCOME

Experience authentic Irish hospitality

Anantara The Marker Dublin Hotel



Exceptional stays in a storied setting

Anantara The Marker Dublin Hotel offers contemporary urban luxury overlooking the Grand Canal Square. Perfectly located in the modernised Docklands, the hotel captures the unique mix of vibrant charm and rich culture that exemplifies the spirit of modern Dublin.

Originally a significant Viking settlement and port, Dublin's character has been shaped by architecture spanning from medieval to modern times. Built by the greatest engineers of the age, the Grand Canal Docks were the final point of the Grand Canal (An Chanáil Mhór), connecting Dublin, in the east of Ireland, with the River Shannon in the west, via a series villages and towns.

In recent years, the area has developed to become one of the trendiest places to live, work and play in Dublin. It is home to the headquarters of numerous global players in the banking, legal and tech sector. With companies such as TikTok, Google and Salesforces choosing Grand Canal as their base, the futuristic area has become affectionately known as 'Silicon Docks'.

Guests at Anantara The Marker enjoy a unique blend of vibrant modern city life and classic Irish charm.

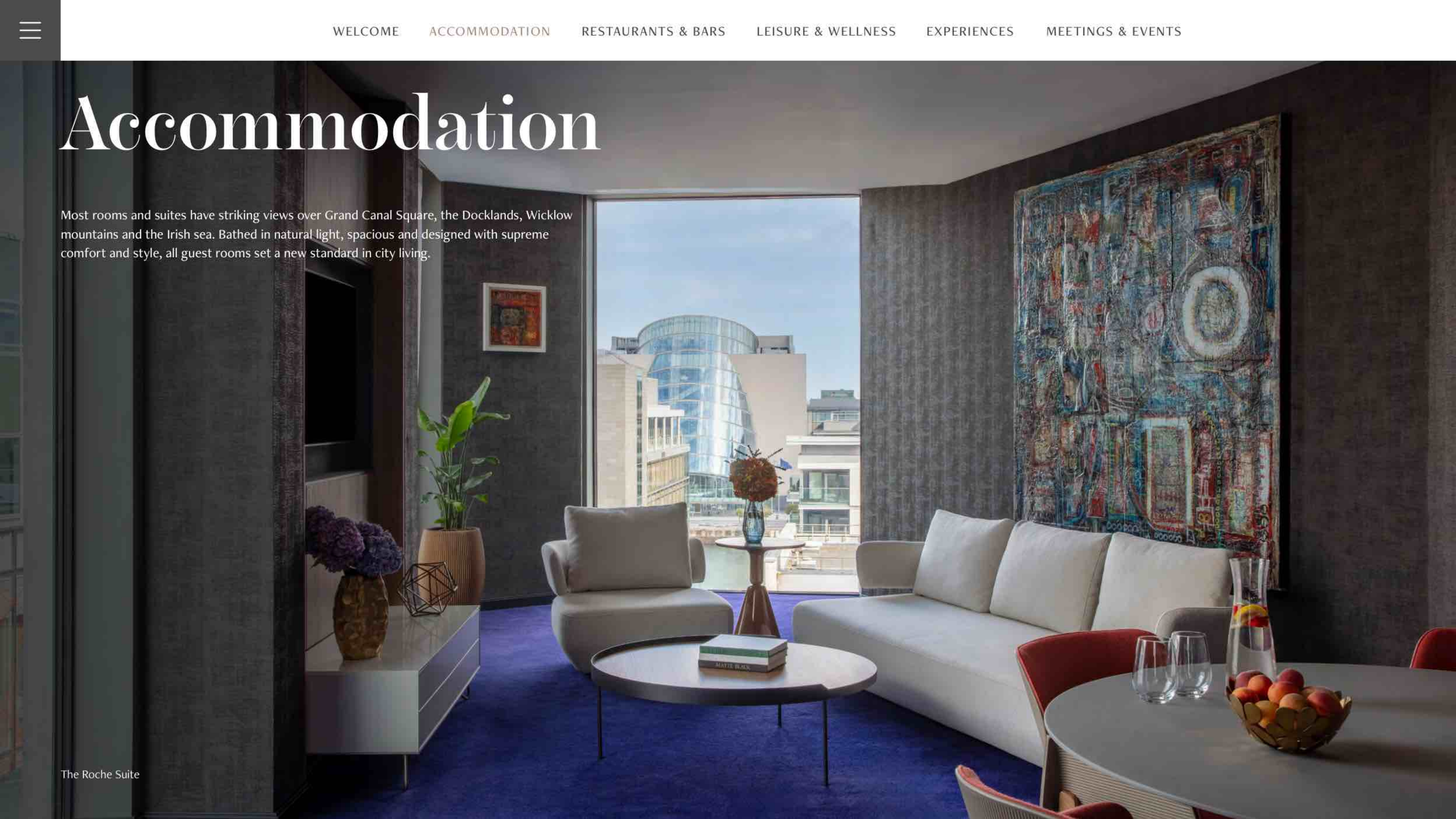


[WELCOME](#)[ACCOMMODATION](#)[RESTAURANTS & BARS](#)[LEISURE & WELLNESS](#)[EXPERIENCES](#)[MEETINGS & EVENTS](#)

Accommodation

Most rooms and suites have striking views over Grand Canal Square, the Docklands, Wicklow mountains and the Irish sea. Bathed in natural light, spacious and designed with supreme comfort and style, all guest rooms set a new standard in city living.

The Roche Suite





Accommodation



DELUXE ROOM

30 sqm / 323 sqft
Maximum 2 adults

Deluxe Rooms marry style and functionality, with ergonomic furnishings and high-tech amenities designed with sleek, contemporary flair. The bathroom is indulgent, with floor-to-ceiling marble creating an impressive sanctuary, and luxurious toiletries.

Connecting rooms available.



PREMIUM ROOM

33 sqm / 355 sqft
Maximum 2 adults

Premium Rooms offer a modern space with high tech amenities that range from an interactive entertainment system to a Nespresso Zenius machine. Make a fresh brew, then sink into an Eames-style chair or Villeroy & Boch marble bathtub.

Connecting rooms available.



PREMIUM ROOM VIEW

35 sqm / 377 sqft
Maximum 2 adults & 1 child

These bright and spacious rooms feature stunning views over Bord Gáis Energy Theatre. High-tech amenities range from an interactive entertainment system to a Nespresso Zenius machine.



Accommodation



PREMIUM GRAND CANAL VIEW ROOM

35 sqm / 377 sqft
Maximum 2 adults & 1 child

These sleek, comfortable rooms highlight the hotel's impressive view over Grand Canal Square and the waterfront. High-tech amenities range from an interactive entertainment system to a Nespresso Zenius machine. Luxurious comforts include a spacious marble bathroom complete with a soaking tub.

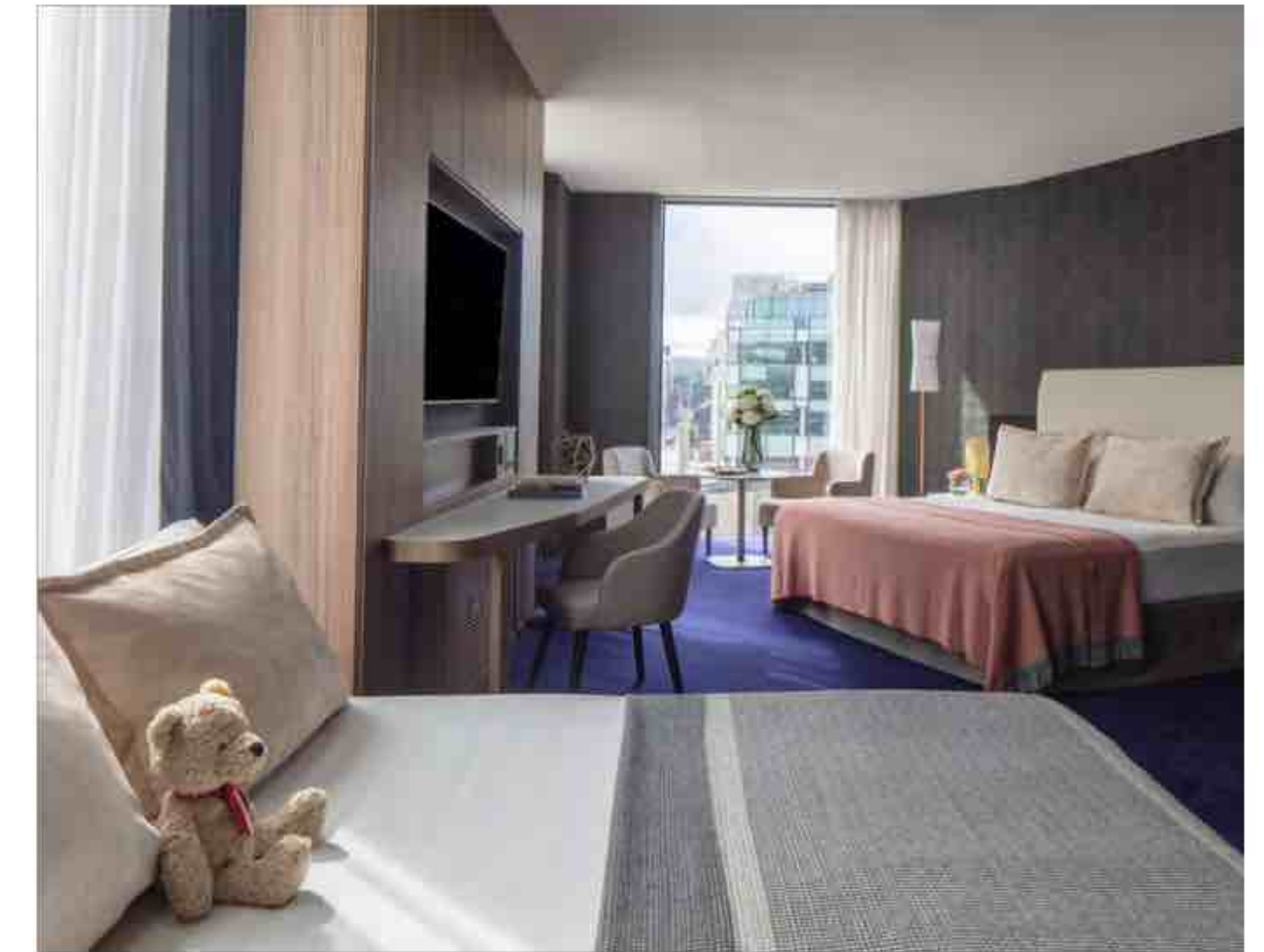


FAMILY ROOM

40 sqm / 430 sqft
Maximum 2 adults & 2 children

Our Family Room offers a warm and welcoming environment for children, complete with a cosy teepee, a selection of board games, and an assortment of books to keep young guests entertained. Upon arrival, your little ones will also be treated to milk and cookies.

Please note, the teepee is subject to availability.



FAMILY ROOM WITH VIEW

43 sqm / 463 sqft
Maximum 2 adults & 2 children

With sweeping views over Grand Canal Square and the waterfront, these rooms offer a warm and welcoming environment for families with a cosy teepee, board games and books to keep younger guests entertained. Upon arrival, your little ones will also be treated to milk and cookies.

Please note, the teepee is subject to availability.



Accommodation



JUNIOR CORNER SUITE

40 sqm / 430 sqft
Maximum 3 adults

Junior Corner Suites are ideal for business travellers or families, with extra space to work, lounge and rest. Natural sunlight falls on the desk with its Eames-style chair, a freshly brewed espresso is at your fingertips, and cots can be added for children with space easily left over for play.



JUNIOR CORNER SUITE WITH VIEW

43 sqm / 463 sqft
Maximum 3 adults

Wake to views of bustling Grand Canal Square, the cityscape and the misty Wicklow Mountains in the distance. This elegant corner suite is the epitome of modern elegance, with original Irish artworks and plush colourful fabrics adorning the light space.



THE ROCHE & THE SCHWARTZ

85 sqm / 915 sqft & 92 sqm / 990 sqft
Maximum 3 adults

Each with a separate living room bedecked with plush rugs, pillows and throws, a designer sofa set and original paintings, our two one-bedroom suites redefine city living. The Roche is named after the Dublin-born Nobel Prize-winning architect of the Convention Centre, over which it looks. The Schwartz is named for the designer of Grand Canal Square and offers sixth-floor views of the square below.



PRESIDENTIAL SUITE VIEW

129 sqm / 1,388 sqft
Maximum 4 adults

At an expansive 129 square metres (1,400 sqft) the Presidential Suite is located on the fifth floor and boasts unobstructed views of Grand Canal Square and iconic architectural landmarks that make up the city's unique fabric. Two ensuite bedrooms open onto a breakfast room and separate living room, which feature luxurious comforts, including specially commissioned furnishings and art and a Nespresso machine.



Amenities & services

ROOM FEATURES AND AMENITIES

- Complimentary high-speed WiFi
- International satellite LED TV
- Chromecast TV
- King or twin beds
- Bathroom with rain shower and/or bathtub
- Hair dryer
- Cotton slippers and bathrobes
- Turndown service
- Work desk with international power sockets
- Personal safe
- Minibar
- Nespresso machine and tea-making facilities
- Telephone with external direct line
- Luxurious bath amenities
- Pillow menu
- Connecting rooms available

GUEST SERVICES

- Concierge service
- Secretarial services
- 24-hour business centre
- 24-hour room service
- Valet parking
- Laundry, dry-cleaning and pressing services
- Swimming pool
- Anantara Spa, wellness services and fitness centre





[WELCOME](#)

[ACCOMMODATION](#)

[RESTAURANTS & BARS](#)

[LEISURE & WELLNESS](#)

[EXPERIENCES](#)

[MEETINGS & EVENTS](#)

Restaurants & bars





THE MARKER BAR & LOUNGE

The Marker Bar & Lounge buzzes from morning till night. Relax with an espresso, or enjoy lunch with selection of light and classic dishes. As the markers illuminate, sit down to a delectable dinner of eclectic modern fare and sip on curated cocktails.

Opening hours: Monday – Sunday: 9:00 am – 11:00 pm
Kitchen: 12:00 pm – 8:00 pm



FORBES STREET BY GARETH MULLINS

One of Dublin's most exciting restaurants, Forbes Street is an expression of all that is brilliant in Ireland's eclectic capital city. With an ever-evolving menu showcasing the best local produce from land and sea, each dish tells a story.

Opening hours: Tuesday – Saturday: 5:00 pm – 10:00 pm



THE ROOFTOP BAR & TERRACE

The rooftop flows from indoors to out, a mix of intimate and social areas. Spectacular 360° views extend to the mountains on one side and the Irish Sea on the other. Relaxed all-day alfresco dining moves towards a more upbeat ambience at sunset. Head up for cocktails and a sharing platter at this destination for style conscious urbanites. The Rooftop Bar & Terrace has seasonal opening hours and is also available for private events.

Seasonal opening: Open from May – September



AFTERNOON TEA

The Poetry & Places Afternoon Tea is a cultural and culinary adventure through the charms of Ireland with views over bustling Grand Canal Square. A delicious array of sandwiches, tea breads and handcrafted pastries inspired by Ireland's renowned poems and striking landscapes are perfectly paired with a selection of organic and sustainable Ronnefeldt teas.

Opening hours: daily from 1:00 pm – 4:00 pm



BREAKFAST

Mornings begin with a quintessential Irish breakfast or continental buffet spread featuring a myriad of local delicacies, from locally sourced smoked salmon and Irish honey to handmade pastries.

Opening hours: Monday – Friday: 6:30 am – 7:00 am
Saturday & Sunday: 7:00 am – 11:00 am



IN-ROOM DINING

For gourmet flavours at any time of the day or night, the in-room dining menu offers a range of options, from breakfast in bed or a healthy snack to midnight treats or an indulgent dessert. Relax in comfort as our team delivers delicious delights directly to your room.

Opening hours: 24 hours, 7 days a week



SPICE SPOONS

Immerse yourself in the art of Irish cuisine. Your journey begins by private car up the north coast of Dublin to the fishing town of Howth. From arrival, you will tour a private charter around the island Ireland's eye with potential spottings of seals, falcons and puffins hiding in the cliffs. Moving on you visit a smoked salmon house where the experts talk about the importance of fish quality and the secrets of good smoked salmon. Afterwards, you will become a student at Chef's cooking class where you learn how to bake our famous brown soda bread using traditional buttermilk and wholemeal flour.



[WELCOME](#)

[ACCOMMODATION](#)

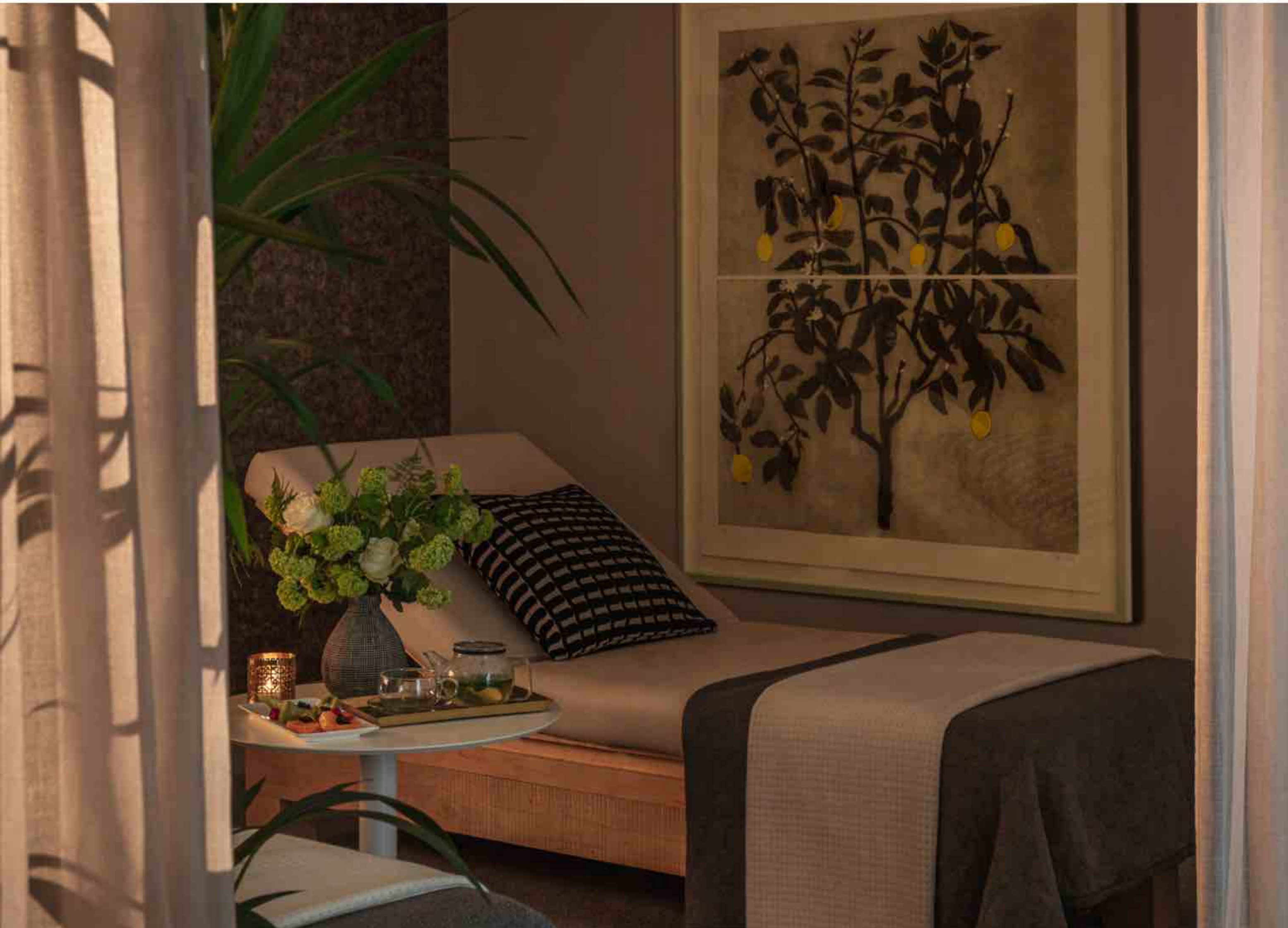
[RESTAURANTS & BARS](#)

[LEISURE & WELLNESS](#)

[EXPERIENCES](#)

[MEETINGS & EVENTS](#)

Leisure & wellness

[WELCOME](#)[ACCOMMODATION](#)[RESTAURANTS & BARS](#)[LEISURE & WELLNESS](#)[EXPERIENCES](#)[MEETINGS & EVENTS](#)

Anantara Spa

A peaceful respite from the outside world, Anantara Spa is beautifully clad in dark charcoal Kirkstone and sophisticated and minimalist décor. A range of massage treatments and advanced skincare regimes designed for ultimate relaxation and rejuvenation are expertly delivered by experienced therapists, while the 23-metre infinity pool, Jacuzzi, sauna and eucalyptus-infused steam room provide revitalisation in the heart of Dublin.

SPA FACILITIES

- Five treatment rooms
- 23-metre indoor infinity pool (75 feet)
- Jacuzzi
- Eucalyptus-infused steam room
- Sauna
- Relaxation areas
- Fitness suite equipped with state-of-the-art Technogym machines
- Marker Club: an exclusive spa and lifestyle membership, offering a host of hospitality, spa and fitness experiences.



Recreation & leisure

Anantara The Marker Dublin embodies the ideal balance of bustling business hub and authentic city discovery. World-class leisure facilities make relaxation a pleasure, while extensive business facilities make work easy. At Anantara, we take a holistic approach to wellbeing, helping you lead a healthier lifestyle while still enjoying every experience to the full.

Start your day with a workout at the gym, followed by a dip in the infinity pool. Indulge in a rejuvenating treatment at Anantara Spa, where you can experience therapies from both the east and west.

Before taking a leisurely stroll around the stunning surroundings, make sure to enjoy a seasonal raw juice while enjoying energising waterside views at the Marker Bar & Lounge. As the day winds down, relax with sunset cocktails at the Rooftop Bar & Terrace, soaking in the breathtaking 360-degree sights of Dublin's coast and cityscape.

HOTEL LEISURE FACILITIES & SERVICES

- Fitness suite equipped with state-of-the-art Technogym machines
- Seasonal rooftop yoga classes
- Seasonal run club





WELCOME

ACCOMMODATION

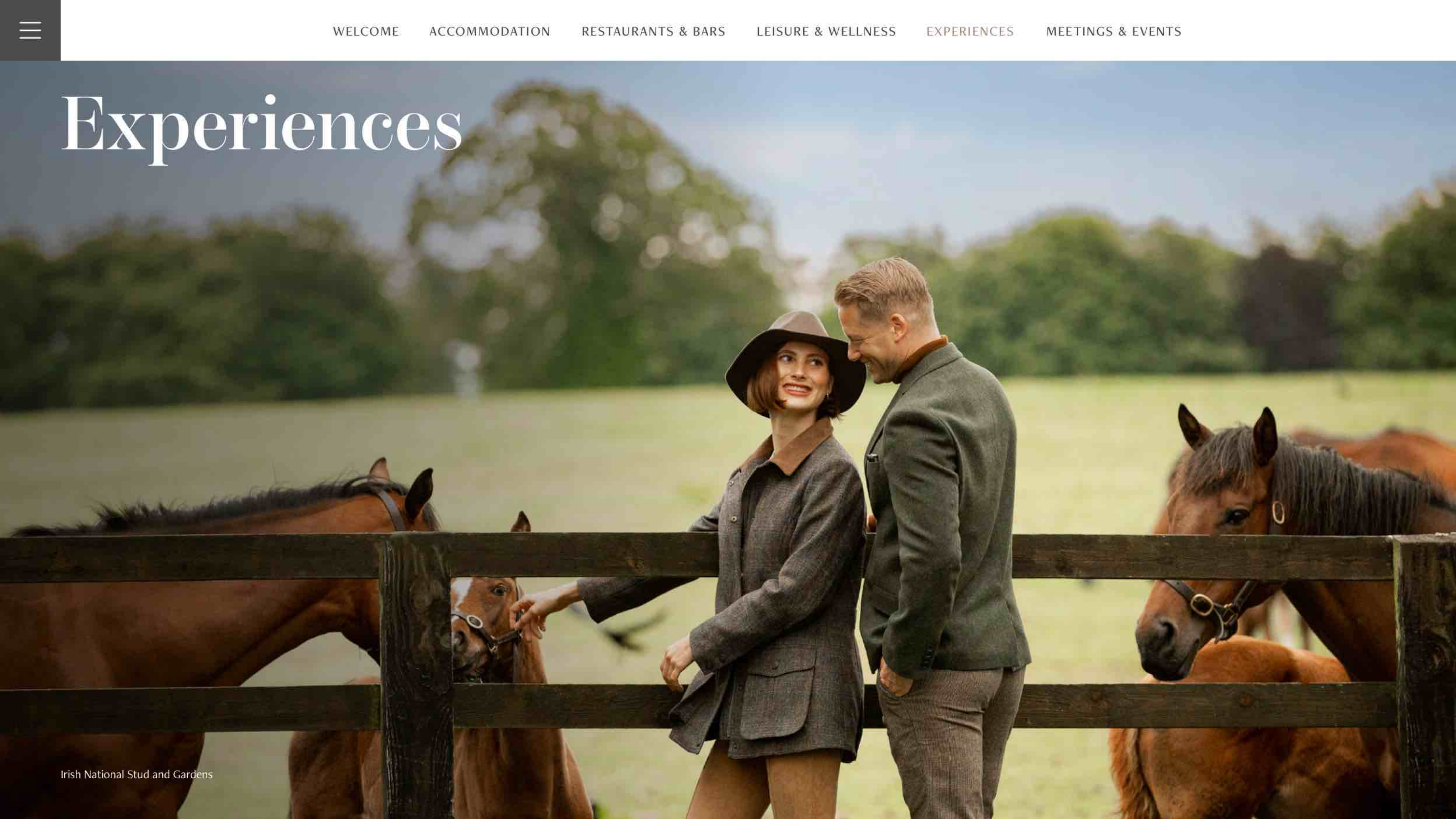
RESTAURANTS & BARS

LEISURE & WELLNESS

EXPERIENCES

MEETINGS & EVENTS

Experiences



[WELCOME](#)[ACCOMMODATION](#)[RESTAURANTS & BARS](#)[LEISURE & WELLNESS](#)[EXPERIENCES](#)[MEETINGS & EVENTS](#)

Local experiences

From live rugby matches at the Aviva Stadium to leisurely strolls along the historic docks, memorable moments await. The hotel's location allows guests to enjoy the best of Dublin, just a stone's throw from some of the city's most iconic landmarks and attractions, including:

- Bord Gáis Energy Theatre
- Windmill Lane Recording Studio
- EPIC The Irish Immigration Museum
- Convention Centre Dublin
- Trinity College Dublin
- St. Patrick's Cathedral
- National Gallery of Ireland
- Jameson Distillery Bow Street
- Guinness Storehouse

Meanwhile, a carefully selected team of experts and gurus invites guests to connect deeper with local culture through a curated series of uniquely Irish experiences.

[WELCOME](#)[ACCOMMODATION](#)[RESTAURANTS & BARS](#)[LEISURE & WELLNESS](#)[EXPERIENCES](#)[MEETINGS & EVENTS](#)

WILD SWIMMING

Ireland's stunning coastal landscapes lure adventurers for wild swimming and water therapy. A plunge into the exhilaratingly cold waters of the Irish Sea offers invigoration and the chance to spot wild seals and dolphins.



IRISH NATIONAL STUD AND GARDENS

In nearby County Kildare, a private guide leads a tour through the woodlands and waterways of The Irish National Stud and Gardens to encounter Ireland's finest thoroughbred horses. Learn more about these magnificent animals and make lasting memories.



CRAFTING AN IRISH COFFEE

Savour Ireland's rich flavours, uncovering the art of crafting an Irish coffee alongside a local coffee master and mixologist. In this immersive experience, the secrets of an iconic drink are unveiled, leaving you with a taste of true Irish craftsmanship to take home.



ROYAL DUBLIN GOLF CLUB

Tee off in style at Royal Dublin Golf Club in an experience that includes chauffeur-driven arrival, personalised orientation, and a post-game whiskey tasting on the hotel's 360-degree rooftop.



ROOFTOP YOGA

Mind, body and soul come back into balance in a serene yoga session on the hotel's panoramic rooftop. Work with an expert yogi to deepen your practice against a breathtaking waterfront backdrop.



DOCKLANDS STORYTELLING TOUR

A captivating stroll through Dublin's Docklands brings vibrant history and enchanting tales to life. Renowned Irish storytelling expert Derek Brennan recounts the mesmerising narratives, hidden secrets and untold legends of the area on this one-of-a-kind adventure, where every step uncovers a new wonder.



[WELCOME](#)

[ACCOMMODATION](#)

[RESTAURANTS & BARS](#)

[LEISURE & WELLNESS](#)

[EXPERIENCES](#)

[MEETINGS & EVENTS](#)

Meetings & events



Meetings & social events

Anantara The Marker Dublin leads the way with events infused with authentic local colour and customised experiences. With capacities ranging from 6 to 350 people, the hotel offers nine exceptional venues perfect for small-to-large-scale meetings, events and conferences.

The state-of-the-art, versatile spaces are visually impressive and include video conferencing, multi-media equipment, LCD displays, WiFi and air-conditioning.

Most boast natural daylight and views of Chimney Park, an iconic landmark and a surprising hidden treasure, tucked into the contrasting urban landscape. Three of the spaces have direct own-door access to Chimney Park, creating even more flexibility.

A 360-degree 3D diagramming tool is available prior to every event for virtual planning and expert event organisers are on hand to ensure every detail is perfect.

Meeting Room	Area (sqm)	Area (sqft)	Dimensions (in M LxWxH)	Banquet	Board Room	Class Room	Cocktail	U-Shape	Theatre	Cabaret	Daylight
The Marker One	177	1,905	12 x 14 x 4.7	110	34	102	190	43	150	80	NO
The Marker Two	177	1,905	12 x 14 x 4.7	110	34	88	160	43	130	70	NO
combined	354	3,810	12 x 28 x 4.7	240	68	180	350	86	300	170	NO
The Carnac	30	320	5.4 x 5.5 x 2.7	10	12	15	23	12	23	8	YES
The Hamilton	27	296	5.4 x 5.1 x 2.7	10	10	6	-	10	16	8	NO
combined	57	616	5.4 x 10.6 x 2.7	24	24	22	58	22	42	21	YES
The Omer	48	519	4.9 x 9.85 x 2.7	10	8	8	23	10	25	8	YES
The Broadstone	26	282	4.9 x 5.35 x 2.7	10	10	8	-	10	16	8	NO
combined	74	802	4.9 x 15.2 x 2.7	30	26	26	51	14	51	24	YES
The Hibernia	44	474	4.3 x 10.1 x 2.7	30	26	22	42	-	42	21	YES
The Aqueduct	17	189	4.3 x 4.1 x 2.7	10	8	-	-	-	12	7	NO
combined	61	657	4.3 x 14.2 x 2.7	32	28	30	72	-	72	28	YES
The Shannon	94	1,011	6.5 x 14.5 x 2.7	60	32	55	100	36	110	47	YES

[WELCOME](#)[ACCOMMODATION](#)[RESTAURANTS & BARS](#)[LEISURE & WELLNESS](#)[EXPERIENCES](#)[MEETINGS & EVENTS](#)

Weddings & special occasions

At Anantara The Marker Dublin, wedding celebrations are stylish, intimate and utterly bespoke, with a team of dedicated planners and chefs to perfect your special day. Exchange vows on the rooftop as the sun sets over the city, or say “I Do” in one of the stylish indoor locations.

From intimate gatherings with your nearest and dearest to lavish affairs for up to 240 guests, every wedding is unique, and Anantara The Marker ensures that your special day is just as individual as you.



Anantara The Marker Dublin Hotel
Grand Canal Square, Docklands, Dublin 2, D02 CK38, Ireland
+353 (01) 687 5100 | info.themarker@anantara-hotels.com
ANANTARA.COM