

**Anantara Chiang Mai Resort**  
**Press Kit**  
**2025**



Chiang Mai, with its unique culture, lush landscapes, and relaxed way of life, has captivated travelers for centuries. Located just a few minutes from the city center and the airport, Anantara Chiang Mai Resort is a riverside oasis in the heart of Thailand's cultural capital. The resort beautifully combines heritage charm with contemporary luxury. Situated alongside the Mae Ping River, this boutique retreat serves as a gateway to Lanna culture while offering world-class amenities. The centerpiece of the resort is a 100-year-old colonial house, which now hosts exceptional dining experiences. With sleek, zen-inspired rooms and suites, an award-winning spa, and exclusive river cruises, Anantara Chiang Mai caters to discerning travelers seeking authentic local experiences without sacrificing comfort. Its prime location provides easy access to Chiang Mai's vibrant markets, temples, and natural attractions.

---

**Topline facts**

- **Management:** Minor International PLC
- **Ownership:** Pacific Hotel Chiangmai Co., Ltd
- **General Manager:** Khun Chin Pitak Norathepkitti
- **Architect:** Kerry Hill Architects
- **Built:** 2005
- **Opened as Anantara:** 2013
- **Resort size:** 7 Rais/11,200sqm
- **Room inventory:** 52 rooms, 32 suites and 25 serviced suites



**ANANTARA**  
CHIANG MAI RESORT

- **Starting rate:** USD440++ per night including breakfast and an array of culturally immersive experiences.
  - **Website:** [anantara.com/en/chiang-mai](https://anantara.com/en/chiang-mai)
  - **Instagram:** [@anantara\\_chiangmai](https://www.instagram.com/anantara_chiangmai)
  - **Facebook:** [@anantarachiangmai](https://www.facebook.com/anantarachiangmai)
  - **PR imagery:** [www.themhzone.com](http://www.themhzone.com)
- 



### Location

Considered the cultural capital of Thailand, Chiang Mai has captivated visitors for years with stunning scenery and its relaxed pace. The remains of a storied past are evident, with crumbling sections of the old walls dotted around the city. Its proximity to the Mae Ping River and major trading routes, along with its strategic position flanked by mountains, means Chiang Mai has been of particular importance in the history of the region and as the former capital of the Lanna kingdom.

Burmese' rule of the Lanna Kingdom finally came to an end but it was left abandoned for a while until 1776, where it was reconstructed and restored by prince Kawila. It soon became a port of trading teak, silk and opium for the Laos and Burmese, and the Lanna Kingdom became a part of Siam (Thailand) by 1892.

---



ANANTARA  
CHIANG MAI RESORT



### Getting here

Anantara Chiang Mai Resort is located in the city's most exclusive neighbourhood which winds along the tranquil Mae Ping River. Guests can fly into Chiang Mai International Airport, a 90-minute hop from capital Bangkok, which also receives domestic flights from Phuket in Thailand, and regional flights from Singapore, Hong Kong and Luang Prabang, among others.

---



### Resort features

- **Room inventory:** 52 rooms, 32 suites and 25 serviced suites
- **Restaurants and bars:** 5 restaurants and bars, including The Service at 1921 House, Bodhi Terrace, Brit Bar at 1921 House, The Verandah at 1921 House, and Bubbles rooftop bar
- **Swimming pools:** 2. One Kasara Pool Suite and a 34 metre infinity pool, which is surrounded by lily ponds and loungers, and overlooks the river
- **Babysitting service**

- **Spa:** 225 Sqm spa and wellness facility, including 9 luxurious indoor treatment rooms and couple suites. VIVID Chiang Mai is also located on the same premises offering Vitamin hydrating drip services.
  - **MICE & Event Space:** 1 meeting room over 114 Sqm, seating up to 70 people (theatre)
  - **Fitness centre**
  - **Limousine service and airport transfers**
  - **Valet service and indoor parking**
  - **24-hour security**
  - **24-hour guest services**
  - **Foreign currency exchange**
  - **Laundry and room service**
- 

### Iconic USP's

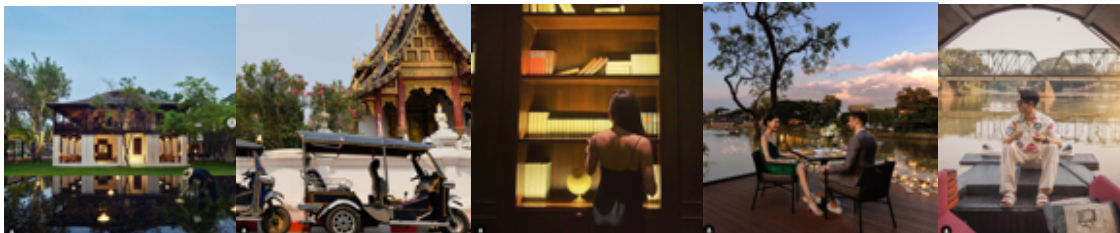
1. **Anantara Chiang Mai resort is located on a former site of the British Consulate dated back in 1920s.** The centennial-old British Consul's residence building has been meticulously preserved and integrated into the resort's design, serving as a key architectural feature. Now the heritage building is the heart of the resort dining experience, 1921 House.
2. **Many rooms and suites overlook the banks of the Mae Ping River.** The resort features its own pier and offer guests award-winning river cruise excursion programmes.
3. **The resort is located within walking distance of some of the best experiences Chiang Mai has to offer.** Including the of the famous Chiang Mai Night Bazaar and the old city walls.
4. **Renowned architect Kerry Hill has masterfully integrated a 100-year-old historical colonial house with contemporary Asian resort design.** The result is a harmonious blend of past and present, where sleek, zen-inspired structures complement the century-old teak building, creating a visually stunning and uniquely Thai luxury experience.
5. **All guests can enjoy a cultural end of day ritual.** As the sun sets, guests at Anantara Chiang Mai Resort will be serenaded with a live Khim performance by a local musician. The Khim, a stringed musical instrument derived from the Mesopotamian or Persian Santur, was introduced to Thailand from China around the end of the Ayutthaya period. The live Khim performance is accompanied by local dancers performing traditional Lanna dances on the lawn in front of the lobby, set against the historic backdrop of the 1921 House.
6. **The resort's spa offers rare therapeutic treatments.** Yam Khang for example has longstanding historic roots connecting guests with the region's rich Lanna heritage, and incorporates flame, sacred water and the healer's bare feet to relieve body tension and restore one's spiritual balance.
7. **Guests can integrate themselves fully in the Lanna culture.** From locally sourced turndown gifts at night, to Lanna Hilltribe artwork in the rooms and rare Lanna spa treatments and local experiences, guests have a unique opportunity to become acquainted with the region's unique identity, customs, architecture, and festivals that differ significantly from the rest of Thailand.
8. **The resort is home to the best steakhouse in the North of Thailand.** Located in the heart of the magnificent 100-year-old heritage house, prime meat cuts and in-house dry-aged beef are paired with fine wines.
9. **Guest can enjoy river excursions, which depart daily from the resort's private pier.** With three vessels to choose from under the JAO Ping River Cruise fleet, the latest addition is Dibba Yana

Chitta, a floating piece of Thai contemporary art, designed by Thailand's renown national artist, Chalermchai Kositpitpat.

---

### Top 5 tips for an unforgettable stay

1. **Discover the rich artistry of Thailand with complimentary daily art and craft workshop.** Held every afternoon from 3:30 pm to 4:30 pm., immerse yourself in traditional techniques and create your own masterpiece in a serene setting. View the workshop schedule and reserve your spot with our Guest Service Team to ensure your place in this unique cultural experience.
  2. **Visit on a weekend.** On Saturday evenings, head to Wua Lai Street for its renowned silverware and handcrafted goods, nestled in a lively atmosphere. On Sundays, don't miss the famous Tha Phae Walking Street, or Sunday Night Market, where you can discover an array of hill tribe products, intricate wood carvings, handicrafts, and local delicacies. These bustling markets are a must-visit for an authentic Chiang Mai experience.
  3. **Book a river excursion on JAO Ping River Cruise.** This is the best way to observe the lives of Chiang Mai residents and greeneries, gaining a unique perspective on their daily activities and the rich heritage of this enchanting region.
  4. **Find the secret door.** Hint. Visit The Service at 1921 House where the bookcase is not quite what it seems.
  5. **Learn Muay Thai with a pro.** Our skilled Muay Thai master is on hand to introduce you to Thailand's traditional martial art and combat sport.
- 



### Most Instagrammable moments

1. Discover the secret door at The Service at 1921 House
  2. Experience Chiang Mai anew on the distinctive JAO Ping River Cruise, offering a fresh perspective on sightseeing
  3. Book Designer Dining, a private dining experience for two on a deck overlooking the river
  4. Hop on a tuk tuk to explore Chiang Mai's historic sites like Wat Chedi Luang and Chiang Mai Gate
  5. Find paradise amidst the lush landscape of the resort
- 

### What's in a name?



ANANTARA  
CHIANG MAI RESORT

- Derived from the Sanskrit word meaning “without end”, the word “Anantara” embraces the excitement of discovery and the vibrant energy of new horizons.
  - Chiang Mai, meaning "New City" in Thai, was named to mark its establishment as the new capital of the Lanna Kingdom in 1296 by King Mengrai. The term "*Chiang*" means "city" or "fortified town," and "*Mai*" means "new." King Mengrai founded Chiang Mai as a strategically located and fortified city along the Ping River, replacing the nearby city of Chiang Rai as the capital.
  - The Lanna Kingdom gets its name from the Thai words "*Lan*" (a million) and "*Na*" (rice fields), meaning "Kingdom of a Million Rice Fields." This name reflects the region's fertile valleys and its historical agricultural abundance, which supported its prosperity.
- 



## Architecture and design

Just a short tuk tuk ride from Chiang Mai’s Old Town, Anantara Chiang Mai is a unique urban resort that’s hidden behind a bamboo wall. The surrounding mid-rises and city bustle melt away as soon as guests enter the complex, which is made up of a series of low-slung modern buildings and green spaces that are bordered by the Mae Ping River.

The complex was designed by the late Australian architect Kerry Hill, who has masterminded a clean, understated design that centres around the original 1920s colonial building of the former British Consulate. Masterfully incorporating three key elements: teak wood, rocks, and water, these elements come together to create a harmonious and immersive environment that reflects the region's natural beauty and cultural heritage.

In a nod to the region’s rich history as a forestry and teak export hub, the resort’s architecture makes extensive use of teak, a material known for its durability and warm, rich tones. From the lobby to the guest rooms and exterior façades, teak is employed to create a sense of luxury and connection to the local heritage.



The timber-lined guest rooms all feature balconies with daybeds, open-plan bathrooms clad with handmade red tiles and terrazzo flooring. This vibrant hue adds a touch of local culture and warmth to the modern aesthetic, creating a harmonious blend of contemporary style and traditional charm.

Throughout the hotel, water has been used to great effect. Inspired by the neighboring Mae Ping River, the resort's incorporation of water features, such as ponds, pool, and a water curtain wall at Bodhi Terrace, creates a soothing ambiance and complements the use of teak and rocks. This thoughtful use of water enhances the overall guest experience, promoting relaxation and well-being and reflecting scenes of life on the river.

---

### Sustainability credentials

- **Water treatment.** Greywater from everyday operations is treated, then recycled to water the verdant grounds.
  - **Energy.** The resort's roof features 573 solar cells with 312.38 kW which saves approximately 15% on energy consumption.
  - **Local artisans and apprentices.** The resort's "Streetwise Insider" programme connects guests with local attractions. Every year we welcome students from local colleges and universities to partake in the apprenticeship. Guests also can take home some local souvenirs from Doi Tung Royal Project, Elephant Poo Poo Paper Park, and DAO Ethical gifts, with the purchases, guest can help support the jobs of underprivileged communities and hill tribal women.
  - **Locally sourced food and beverages.** We work with local businesses, such as food and produce suppliers, to ensure the freshest ingredients and to support local farmers.
  - **Dollars for Deeds.** Anantara's Dollars for Deeds programme gives guests the option to donate one dollar (THB 30) per night of their stay, with Anantara matching each guest's contribution. The funds raised are donated to three worthwhile foundations: the Golden Triangle Asian Elephant Foundation (GTAEF) in Chiang Rai, the Mai Khao Turtle Foundation in Phuket and the Princess Sirindhorn Craniofacial Centre at Chulalongkorn Hospital in Bangkok.
-



**ANANTARA**  
CHIANG MAI RESORT



### **Stays: rooms, suites and serviced suites**

The resort's 84 rooms and suites are housed in a low-rise building wrapped around a garden courtyard. With sleek contemporary design, each boasts a feeling of space and serenity. Suites are exceptionally luxurious, with open living spaces and upgraded amenities. Suite guests enjoy exclusive Kasara privileges, including afternoon refreshments, social hours with cocktails and canapes, laundry service and a late check-out.

#### **Rooms**

*Rooms start from USD440++ per night including breakfast, and an array of culturally immersive experiences.*



#### **Deluxe Garden View Room**

##### [Deluxe Garden View Room](#)

Deluxe rooms bring the tranquility of the outdoors in, with sleek Zen lines and cool materials. Guests can lounge on their daybed overlooking lush grounds or unwind with in-room yoga or a soak in the tub.

- 50 Sqm
- Maximum 2 adults
- *Highlights include a terrace with garden view via floor to ceiling windows, day bed, rain shower and Terrazzo tub, 50" flat screen TV, yoga mat, Nespresso coffee machine, Dyson hair dryer, air purifier and mini bar.*

#### Deluxe River View Room

Deluxe rooms bring the tranquillity of the outdoors in, with sleek Zen lines and cool materials. Guests can lounge on their daybed overlooking the Mae Ping River, or unwind with in-room yoga or a soak in the tub.

- 55 Sqm
- Maximum 3 adults & 1 child
- *Highlights include a terrace with river view via floor to ceiling windows, day bed, rain shower and Terrazzo tub, 50" flat screen TV, yoga mat, Nespresso coffee machine, Dyson hair dryer, air purifier and mini bar.*
- 

Kasara suites offer the luxury of space, additional amenities, and exclusive privileges including daily sundowners and canapes, savings on dining and spa, complimentary laundry and more.



#### **Suites**

**Suites** start from USD 560++ per night, including breakfast, and an array of Kasara benefits including afternoon refreshments from 12:00 pm to 5:00 pm, sundowners with cocktails and canapés from 3:00 pm to 5:00 pm, complimentary laundry service, late check out until 2:00 pm, and laptop for day use.

#### Kasara Garden View Suite

Kasara suites at Anantara Chiang Mai luxury resort are spacious and sunlit, with open plan living and dining spaces. Guests can take their morning espresso out on the balcony or unwind with a glass of wine from their chiller.

- 105 Sqm
- Maximum 3 adults or 2 adults and 2 children

- *Highlights include a terrace with garden view via floor to ceiling windows, day bed, dining and living area, rain shower and Terrazzo tub, 65" flat screen TV, wine chiller, yoga mat, Nespresso coffee machine, Dyson hair dryer, air purifier and mini bar.*

### [Kasara River View Suite](#)

Kasara suites at Anantara Chiang Mai luxury resort are spacious and sunlit, with open plan living and dining spaces. Guests can take their morning espresso out on the balcony, or unwind with a glass of wine from their chiller.

- 105 Sqm
- Maximum 3 adults or 2 adults and 2 children
- *Highlights include a terrace with river view via floor to ceiling windows, day bed, dining and living area, rain shower and Terrazzo tub, rain shower and Terrazzo tub, 65" flat screen TV, wine chiller, yoga mat, Nespresso coffee machine, Dyson hair dryer, air purifier and mini bar.*



### **Riverfront Suite**

**The Riverfront Suite** starts from USD 730++ per night, including breakfast, and an array of Kasara benefits including afternoon refreshments from 12:00 pm to 5:00 pm, sundowners with cocktails and canapés from 3:00 pm to 5:00 pm, complimentary laundry service, late check out until 2:00 pm, and laptop for day use. Guests also receive exclusive benefits including in-suite check in, a reserved breakfast table at Bodhi Terrace or in-suite breakfast, a welcome bottle of sparkling wine and one roundtrip transfer per stay between the resort and either the city, old town or Nimman area.

### [Kasara Riverfront Suite](#)

The three most exclusive suites front the Mae Ping River, with magnificent views to be enjoyed from the bed, bathroom, indoor and outdoor lounging spaces adorned by Jim Thompson silks. The entire stay is one of privilege, with in-suite check in and greeting by management, as well as the option of breakfast in bed each day.

- 105 Sqm
- Maximum 3 adults or 2 adults and 2 children

  
**ANANTARA**  
CHIANG MAI RESORT

- *Highlights include a terrace with river view via floor to ceiling windows, day bed, dining and living area, rain shower and Terrazzo tub, rain shower and Terrazzo tub, 65" flat screen TV, wine chiller, yoga mat, Nespresso coffee machine, Dyson hair dryer, air purifier and mini bar.*



**Kasara Pool Suite**

*The Kasara Pool Suite starts from USD 830++ per night, including breakfast, and an array of Kasara benefits including afternoon refreshments from 12:00 pm to 5:00 pm, sundowners with cocktails and canapés from 3:00 pm to 5:00 pm, complimentary laundry service, late check out until 2:00 pm, and laptop for day use. Guests also receive exclusive benefits including in-suite check in, a reserved breakfast table at Bodhi Terrace or in-suite breakfast, a welcome bottle of sparkling wine and one roundtrip transfer per stay between the resort and either the city, old town or Nimman area.*

*For stays of three nights or more, guest will enjoy Book Direct Benefits including complimentary private roundtrip transfers from and to Chiang Mai Airport, early check-in and late check-out subject to availability and resort credit of THB 1,000.*

**Kasara Pool Suite**

The most exclusive suite has the added luxury of a private plunge pool, where guests can enjoy total privacy hidden away amidst the lush foliage that surrounds.

- 140 Sqm
- Maximum 3 adults or 2 adults and 2 children
- *Highlights include a temperature-controlled plunge pool with jacuzzi cabana, and terrace with a dining table. The suite also features a dining and living area, rain shower and Terrazzo tub, 65" flat-screen TV, wine chiller, yoga mat, Nespresso coffee machine, Dyson hair dryer, air purifier, and mini bar.*



### **Rooftop pool at Anantara Chiang Mai Serviced Suites**

With only 25 suites spread over seven storeys, Anantara Chiang Mai Serviced Suites offers an exclusive base from which to take in the sights of the Lanna capital. The suites themselves are spacious and fully equipped, ideal for business travellers, families, including those with pets, and long stays. Each consists of ensuite bedrooms, a separate living room, a kitchen and laundry. Guests benefit from complimentary minibar, daily housekeeping, as well as secure parking downstairs and a 24-hour service. They also enjoy, in addition to the rooftop pool, full access to the facilities of Anantara Chiang Mai Resort, located just across the road and reached via a covered walkway.

**Serviced suites** start from *USD430++per night, including daily breakfast, exclusive access to a rooftop pool with city and mountain views, complimentary minibar, daily housekeeping, as well as secure parking downstairs and a 24-hour service.*

#### [One Bedroom Suite](#)

Guests can enjoy all the comforts of home in the heart of the city at this residence hotel in Chiang Mai.

- 60 Sqm
- Maximum 2 adults
- *Highlights include a balcony, living and working spaces, kitchen and dining area, washing machine and dryer, rain shower and Terrazzo tub, complimentary mini bar, 50" flat screen TV, Nespresso coffee machine, Dyson hair dryer, air purifier and mini bar.*

#### [Premier One Bedroom Suite](#)

Premier suites enjoy higher-floor views, as well as easy access to the rooftop.

- 60 Sqm
- Maximum 2 adults
- *Highlights include a balcony, living and working spaces, kitchen and dining area, washing machine and dryer, rain shower and Terrazzo tub, complimentary mini bar, 50" flat screen TV, Nespresso coffee machine, Dyson hair dryer, air purifier and mini bar.*

#### [Two Bedroom Suite](#)

Guests can enjoy all the comforts of home in the heart of the city at this residence hotel in Chiang Mai. Two ensuite bedrooms open onto a shared living and dining room, and cooking and laundry facilities make travelling with children a breeze.

- 90 Sqm
- Maximum 4 adults
- *Highlights include a balcony, living and working spaces, kitchen and dining area, washing machine and dryer, rain shower and Terrazzo tub, complimentary mini bar, 50" flat screen TV, Nespresso coffee machine, Dyson hair dryer, air purifier and mini bar.*

#### Premier Two Bedroom Suite

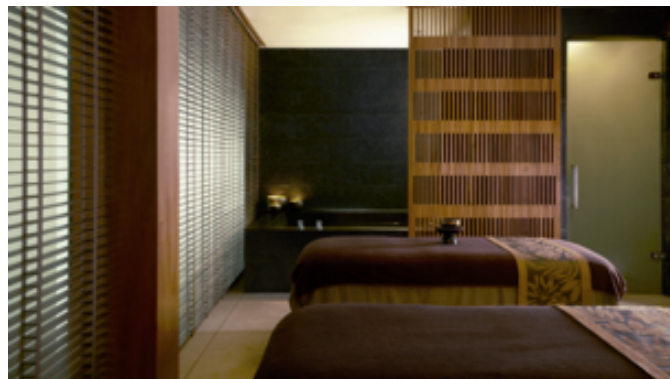
Premier suites enjoy higher-floor views, as well as easy access to the rooftop. Contemporary design is spiced with Thai accents and materials, bathed in natural light through floor-to-ceiling windows.

- 90 Sqm
- Maximum 4 adults
- *Highlights include a balcony, living and working spaces, kitchen and dining area, washing machine and dryer, rain shower and Terrazzo tub, complimentary mini bar, 50" flat screen TV, Nespresso coffee machine, Dyson hair dryer, air purifier and mini bar.*

#### Three Bedroom Suite

This expansive suite is ideal for entertaining while in the city. Three ensuite bedrooms open onto an elegant living and dining room, where guests can host dinner parties at these residences in Chiang Mai with a personal chef and waiters for the evening.

- 160 Sqm
- Maximum 6 adults
- *Highlights include a balcony, living and working spaces, kitchen and dining area, washing machine and dryer, rain shower and Terrazzo tub, complimentary mini bar, 50" flat screen TV, Nespresso coffee machine, Dyson hair dryer, air purifier and mini bar.*



**Spa and wellness**



A world of wellbeing awaits at the award-winning Anantara Spa. Guests can explore the time-tested signature treatments that relax body and mind or Lanna healing led by highly trained and certified specialists.

- 4 individual treatment rooms with a steam shower and terrazzo bathtub
- 4 couples' treatment rooms with an herbal steam room, aromatic sauna and terrazzo bathtub
- Fitness centre
- Yoga and yoga fly
- Tai chi
- Thai kickboxing
- Manicure and pedicure lounge.
- Indoor relaxation lounge overlooking resort riverside pool
- IV Hydrating Drip room
- 10:00 am – 10:00 pm

### **Signature experiences**

#### **Lanna Ritual (90 minutes)**

*From USD130++ per person*

The Lanna Ritual at Anantara Chiang Mai Resort is a special wellness and spiritual experience designed to immerse guests in the traditional customs and beliefs of the Lanna culture. It combines elements of traditional healing, spiritual cleansing, and mindfulness, inspired by rituals once practiced in the Lanna Kingdom. This ritual provides a unique way for guests to connect with the local heritage in a peaceful and reflective setting.

#### **Signature Yajoo Massage (60/90 minutes)**

*From USD 110++/USD 130++ per person*

The unique yajoo treatment utilises the healing power of local herb plai to ease tension and to induce deep relaxation. A fragrant herbal poultice is pressed along the body to ease pain and inflammation, followed by a plai oil massage. The experience ends with a gentle scalp massage and tok sen rhythmic tapping on the back.

#### **Tok Sen Therapy (60/90 minutes)**

*From USD 110++/USD 130++ per person*

Rhythmic tapping with a small mallet and wedge made of tamarind wood stimulates the energy points and meridian lines of the body. Deep vibration is combined with manual pressure and passive stretching to transform the body's energy and mind.

#### **Yam Khang Fire Therapy (60 minutes)**

*From USD 116++ per person*

A sacred art, and as such is a rare and prized treatment. The therapist dips her foot in medicated oil, heats it on an iron 'khang' over fire, then massages the body with her foot, relieving pain and releasing blocked energy.

#### **Energy booster invigorate + refresh (15 minutes)**

*From USD 56++ per person*

VIVID by Verita Health is an IV drip bar, anti-ageing and aesthetics hub rolled into one. Located in the heart of the city at Anantara Chiang Mai Resort, VIVID is staffed by a professional team of clinicians who tailor treatments for each patient. Guests can experience an instant boost to their energy levels, as well as improved mental focus and cognitive function with a high dose of Vitamin B12, taurine and alpha lipoic acid. Especially effective as a recovery therapy after a stressful period, this detoxifying treatment is recommended to those who want to be at peak mental and physical performance.

---



## Food & beverage

Anantara Chiang Mai's restaurants present flavours from around the world in a stunning riverfront setting. Guests can enjoy innovative chef creations in the former British consulate, afternoon tea on the verandah, and sparkling cocktails overlooking the sunset.



**Bodhi Terrace**  
**North to South Thai**

*Breakfast: 06.30 am – 10.30 am/Lunch: 12.00 noon – 2.30 pm/Dinner: 5.30 pm – 10.00 pm*

Bodhi Terrace serves up Thailand's favourite regional cuisines infused with the rich overlapping history and flavours of Southeast Asia. From the south: the fire and spice of our Malay neighbours and the sizzle of Hokkien settlers. From the north: the creamy curries of Burma and uniquely Chiang Mai specialities.

Must try dishes:

- Khao Soi River prawn
- Yum Bai Cha
- Moo Hong
- Gae Korlae
- Khao pad sapparod
- Sakoo Phatthalung



**The Service at 1921 House**

**Contemporary steakhouse and grill**

*Lunch: 12.00 noon – 3.00 pm/Dinner: 5.30 pm – 10.00 pm*

Chiang Mai's most memorable steakhouse. The heart of the resort experience is the magnificent 100-year-old heritage house that serves as the contemporary steakhouse and grill. Here, prime meat cuts and in-house dry-aged beef are paired with fine wines.

Must try bites and beverages:

- Beef tartare
- Spiced Calamari
- 1921 House Salad
- TS 1921 Meat Feast
- Nguadoi Wagyu, Chiang Mai, TH
- Phuket lobster
- 1921 House Crumble
- Our Eton Mess

  
**ANANTARA**  
CHIANG MAI RESORT



**Brit Bar at 1921 House**

**Old World drinks and conversations**

*Daily: 12.00 pm – 12.00 am*

With a solid oak bar, leather upholstered armchairs and vintage prints adorning the walls, to enter Brit Bar is to be transported back in time, when life was a leisurely and refined affair. Guests can sip on original cocktail creations inspired by the world's favourite eras, from the roaring 20s to the retro 60s, paired perhaps with a cheese and charcuterie board, imported oysters, Scotch egg or pulled pork sliders.

**Must try bites and cocktails:**

- The roaring 20's
- The retro 60's: Ankle biter style
- The decadent 80's: gnarly style
- Beer-battered cod with tartar sauce
- Angus steak & stout pie
- Scotch egg with black pudding



**The Verandah at 1921 House**

**Casual bites accompanied by a river breeze**

*Daily: 12.00 pm – 12.00 am*

The ground floor of the resort's century-old teak mansion enjoys cool breezes from the river during the day. Guests are invited to taste their way through a light lunch followed by the famous afternoon tea

Must try experiences:

- The Governor's Afternoon Tea



**Bubbles**

**Rooftop Cocktail Bar**

*Daily: 5:30 pm – 10.30 pm*

Chiang Mai's Rooftop Cocktail Bar enjoys a magical setting overlooking the Ping River. A table for two awaits at the end of the glass walkway at river's edge, perfect for a romantic proposal or anniversary, and only available with advanced reservation.

Must try cocktails:

Garnet Crown

Mea-Kha-Nhing

Pink Tournaline

Tiger's Eye



### **Designer Dining**

*Starting from THB 3,200++ per person, including northern Thai Khantoke set*

Guests can choose to dine in a pavilion on the waterfront law or at the end of the glass walkway at river's edge. Designer Dining by Anantara brings cuisine and romance to once-in-a-lifetime settings. The menu is crafted in collaboration with guests' personal chef and each experience includes a discreet butler service and carefully paired wines.

---



### **Signature in-resort experiences**

#### **Afternoon Tea at the Verandah at 1921 House**

*Daily: 2.00 pm – 5:00 pm*

*Starting from THB 990++ per person*

Nestled amidst the shade of the resort's century-old teak mansion, that once served as the British consulate, guests can partake in the very British ritual of Afternoon Tea. Guests will begin their afternoon tea experience with savoury bites including cucumber and cream cheese tartlet, and black truffle arancini,

as well as delicate finger sandwiches featuring coronation chicken and spiced mango, and smoked salmon with chive and roe on brioche. Sweet treats will follow including black sesame and mango crème choux, and of course traditional scones with a Thai twist.

### **Spice Spoons Thai Cooking Class**

*Daily: 10:00 am -11:30 am*

*Starting from USD 95++per person, with minimum two persons per booking*

Guests can learn to create their favourite Thai recipes in a step-by-step Chiang Mai cooking class. The day begins making merit at the spirit house, before travelling by tuk-tuk to the local market to choose fresh ingredients. Culinary enthusiasts then return to the resort's show kitchen, learning to blend spices, textures and flavours before savouring their creations for lunch, returning home with new skills and recipes to impress.

### **Tung flag making**

*Every Monday: 3:30 pm*

*Complimentary for guests*

The Tung flag (or Tung) is a traditional decorative banner commonly used in the Lanna culture of northern Thailand. These flags are notable for their vibrant colours and intricate designs, often carrying significant cultural, spiritual, and ceremonial meanings.

### **Floral art**

*Every Tuesday: 3:30 pm*

*Complimentary for guests*

Floral art in the context of Lanna culture and Thai traditions encompasses a variety of practices involving flowers, which are integral to religious ceremonies, festivals, and everyday life. This art form reflects the deep appreciation for nature, beauty, and spirituality in Thai culture, particularly in the northern region of Thailand

### **Mocktail making**

*Every Wednesday: 3:30 pm*

*Complimentary for guests*

Guests are invited to perfect the art of creating non-alcoholic beverages using local ingredients and herbs.

### **Soap carving**

*Every Thursday: 3:30 pm*

*Complimentary for guests*

Soap carving in the context of Lanna culture refers to the traditional art of carving glycerin soap into intricate designs, often inspired by the rich cultural heritage of northern Thailand. This craft is not only a form of artistic expression but also a way to celebrate the unique aesthetics and symbols found within Lanna culture such as flowers and nature motifs.

### **Sketching masterclass**

*Every Friday: 3:30 pm*

*Complimentary for guests*

This workshop is designed to support artists of all levels improve their sketching skills through structured guidance, techniques, and personalized feedback.

**Herbal compress making**

*Every Saturday: 3:30 pm*

*Complimentary for guests*

Herbal compress making is a traditional practice in Lanna culture, particularly in northern Thailand, where the use of herbal compresses has been integrated into wellness and healing rituals. These compresses are typically made from a combination of local herbs such as lemongrass and tumeric and other natural ingredients such as rice, which are wrapped in fabric and steamed or heated before being applied to the body.

**Fruit carving**

*Every Sunday: 3:30 pm*

*Complimentary for guests*

This intricate craft involves sculpting fruits and vegetables such as watermelon, papaya and pineapple into elaborate designs, often used for decoration, celebration, and presentation in culinary contexts. Fruit carving reflects the region's artistic heritage and is deeply rooted in Thai culture, showcasing the creativity and skill of artisans.



Tok Sen

**Tok Sen therapy workshop**

*Every Monday: From 10:30 am - 11:00 am*

*Complimentary for guests*

Learn the Thai wisdom of Tok Sen, rhythmic tapping with a small mallet and wedge made of tamarind wood stimulates the energy points and meridian lines of the body

**Aerial Yoga**

*Every Monday and Wednesday: From 4:00 pm – 5:00 pm*

*Group sessions start from USD 23 per person*

Guests can take an Aerial Yoga class and restore their inner harmony and body flexibility.



### **Thai Boxing**

*Every Thursday, Saturday and Sunday: From 4:00 pm- 5:00 pm*

*Group sessions start from USD 23 per person*

Guests can discover Thailand's national sport, the traditional martial art of Thai Boxing of Muay Thai with a professional coach.

### **Core and lower body workout**

*Every Wednesday and Sunday: From 1:00 pm – 2:00 pm*

*Complimentary for guests*

Strengthen your core and lower body with this invigorating workout, designed to tone muscles and improve balance. Perfect for all fitness levels, this complimentary session is exclusive to our in-house guests, offering a dynamic mix of exercises to energise your day. Join us and embrace a healthier, stronger you.

---



Nam Jit, Dibba Yana Chitta and Nam Jai

## **Signature Cultural Experiences**

**JAO ping river cruise**

- *Morning voyage: 9.00 am – 10.30 am: Including adventure to nearby Wat Ket Karam, making merit at the temple*
- *Afternoon tea cruise: 2.00 pm – 3.30 pm: Including the very English ritual of afternoon tea*
- *Sunset cruise: 6:00 pm – 8:00 pm: A choice of a free-flow drinks and canapes, or a four-course dinner of royal Thai cuisine.*  
*Cruises start from USD 70++ per person including canapes and free-flowing beverages or a four-course dinner (food only)*

Located right on the banks of the river, and with a private pier, Anantara Chiang Mai is the starting off point for wondrous cruises through the city. Guests can journey in style aboard three types of boats; *Nam Jai*, the teak scorpion-tail barge, which drifts under iconic bridges, past small temples and into lush green. Or the *Nam Jit*, the resort's teak rice barge, which sails along the Mae Ping River, passing some of the city's most iconic bridges, small temples, and lush greenery. The latest addition to JAO Ping River Cruise fleet is *Dibba Yana Chitta*, a floating masterpiece designed by a renowned Thailand's national artist, Chalermchai Kositpipat.



Dibba Yana Chitta

#### **JAO ping river cruise- Dibba Yana Chitta**

- *Dinner cruise: 5:30 pm – 8:00 pm: Including seven course of royal Thai cuisine, by a renowned guest chef with a MICHELIN star and Thai costume on loan.*  
*Dinner is priced at USD 200++ per person, with an additional USD 60++ for wine pairing.*

Described as one of northern Thailand's most spectacular vessels, *Dibba Yana Chitta* or 'Heavenly Boat' is designed by acclaimed Thai National Artist, Ajarn Chalermchai Kositpipat, known worldwide for his famous 'White Temple' in Chiang Rai. The boat's design depicts the journey from this world to the next and the vessel's figurehead has been hand-carved into a mythical creature, symbolising the transport of humans along the river to heaven. Highly exclusive, with only 18 seats, guests on board can indulge in the finest Thai dining experience. Each season, a new tasting menu is to be curated by the kingdom's top Michelin-starred chefs, with the inaugural menu by Chef Piyachart Phudtawong (nicknamed Boy) of Saneh Jaan restaurant in Bangkok.

#### **Streetwise Insider**

*Daily: 9:00 am – 1:00 pm / 9:00 am – 3:30 pm (Half day/Full day)*

*From USD 87++ / USD 116++ per person, minimum 2 persons per booking*

Guests are invited to discover the best introduction to the old city of Chiang Mai and experience the charm of the local people with the Streetwise Insider Tour. The day begins with an exploration of the city's historic gates and corners with a friendly tuk-tuk driver and a professional tour guide. A quick stop for local breakfast, before guests continue to explore iconic sites of the region including Chedi Luang and Pan Tao Temples. The days ends with some time at the lively Warorot Market, and the charming Ton Lam Yai Market, as well as a local coffee shop.



### **Fun fly paramotor**

*Daily: 5:30 am – 8:00 am*

*From USD 170 per person, 20-minute flight (Transfer not included)*

Fun Fly Paramotor in Chiang Mai offers an exhilarating experience for adventure seekers and flying enthusiasts. Paramotoring, also known as powered paragliding, invites individuals to fly with a lightweight motor attached to a paraglider, providing a unique and accessible way to explore the stunning mountains, valleys, and scenic landscapes surrounding Chiang Mai.

### **Wat Phra That Doi Suthep: a spiritual gem of Chiang Mai**

*Daily: 9am-5pm*

*30-minute drive*

As the locals say, a trip to Chiang Mai isn't complete without experiencing the majesty of Wat Phra That Doi Suthep. Dating back to the early 19th Buddhist century, Wat Phra That Doi Suthep stands as the most significant temple in Chiang Mai. Located on the top of Suthep Mountain, the temple's beauty is undeniable, marked by the impressive seven-headed serpent statues flanking the staircase. As you ascend, prepare to be awestruck by the Chiang Saen-style golden pagoda and the exquisite Lanna architecture that surrounds it. The panoramic view of Chiang Mai from this vantage point is simply phenomenal.

### **Tha Phae Gate**

*Daily 24/7*

*20-minute walk*

Tha Phae Gate is an ancient landmark in Chiang Mai, part of the historic wall that surrounds the city's moat. Situated on the eastern side of the wall, this gate was originally built as one of the main entry points into the old walled city of Chiang Mai. Entering the city through Tha Phae Gate allows guests to explore

the entire old city, leading them to the starting point of the Sunday Night Bazaar as well as several nearby temples and attractions that line the wall.

### **Tha Phae Walking Street (Sunday Night Market)**

*Every Sunday, 5:00 pm – 10:00 pm*

*20-minute walk*

Tha Phae Walking Street, also known as the Sunday Night Market, is a vibrant pedestrian market that takes place every Sunday. It offers a wide variety of items that appeal to both locals and tourists, including hill tribe products, wood carvings, and handicrafts. The market extends along Ratchadamnoen Road, branching out at the intersection leading to Wat Phra Singh.

### **Wat Chedi Luang**

*Daily: 5:00 am – 10:00 pm*

*15-minute drive*

Wat Chedi Luang, a historic 14th-century temple in Chiang Mai, is celebrated for its massive chedi (pagoda), which originally stood 98 metres tall and 54 metres wide. Completed in 1481 during King Mengrai's reign, the chedi was partially destroyed by an earthquake in 1545 and later restored. The temple is a fine example of Lanna architecture, featuring a striking Naga staircase and an ornate ordination hall. The City Pillar Shrine or Sao Inthakin, housed within the temple, was erected in 1296 by King Mengrai. Each year, an annual celebration known as 'Sao Inthakin' honours the city pillar, typically occurring in May or June.

### **Bo Sang Umbrella Village**

*Daily: 9am-5pm*

*40-minute drive*

Situated in the San Kamphaeng district, guests will find renowned skilled artisans who meticulously craft traditional Thai umbrellas. Here, they can witness the intricate process of making these stunning pieces, from hand-painting delicate designs to the careful assembly of bamboo and cotton. Visitors can even try their hand at creating their own umbrella.

### **Wat Sri Suphan Community**

*Daily: 9am-5pm*

*10-minute drive or 20-minute walk*

This community is celebrated for its exquisite silver craftsmanship. Guests can watch skilled artisans transform raw silver into intricate jewellery and decorative items, showcasing traditional techniques passed down through generations. The dazzling silver pieces reflect not only the artistry of the makers but also the cultural significance embedded in each creation.

### **Wat Ket Community**

*Daily: 9:00 am- 5:00 pm*

*15-minute drive*

Along the banks of the serene Ping River, Wat Ket Community is a melting pot of cultures, shaped by Chinese traders, Western missionaries, and local residents. This vibrant area showcases a diverse architectural heritage that tells the story of its rich past. At the heart of the community stands Wat Ket Karam, an important historical site that once served as a bustling boat landing for trade routes from Bangkok to Chiang Mai.



## For Families

Children are welcome, and under-4s stay free if they share parents' bedding. Extra beds for 4–11-year-olds cost USD 42++ a night (including breakfast), and USD 83++ a night for over-11s. Babysitters can be booked on request, and a children's menu can be found across all restaurants.

### **Babysitting service**

*From USD 12 per hour for 1 child, USD 18 per hour for 2 children*

Adults can enjoy some me time, knowing their children are in safe hands. The resort offers professional nanny services by accredited, first-aid trained childcare experts.

---





## Weddings, meetings and events

### Meetings and events

*Starting from USD 56++ per person for a full day meeting*

Only a 15-minute drive from Chiang Mai International Airport, guests can hold high-powered gatherings at one of the top luxury hotels in Chiang Mai, in Anantara Chiang Mai resort's dedicated meeting room with video-conferencing and full audiovisual equipment. Delegates can break for coffee or lunch on a peaceful riverside deck or the charming veranda of the heritage house.

Kasara meeting room: 100 guests

The function room: 113 sqm-70 guests

Riverside Lawn: 120 guests

The Service at 1921 House: 100 guests

Bodhi Terrace restaurant: 120 guests

Bubbles Rooftop Bar; 80 guests

### Weddings

*Starting from USD 5,475*

Couples can hold a traditional Thai ceremony in a 100-year-old heritage house, and say 'I do' on a rooftop terrace with sweeping views of the Mae Ping River. Among the most sought-after Chiang Mai wedding venues, the riverside deck and lawn at Anantara Chiang Mai Resort provides the perfect setting for elegant soirées and wedding banquets. Wedding parties can release flame-lit lanterns into the night sky to mark the beginning of the couples' life together.

---

## Guests With Disabilities

Rooms on the ground floor can accommodate guests with mobility limitation.