

# CANYON'S NEW LOAMR MTB TRAIL AND PARK RIDING SHOES DESIGNED TO OFFER SUPREME GRIP AND TRACTION

*Developed for trail and park riders who need support, protection, and pedal control across technical terrain.*



**Embargoed until 11:00 CEST, Tuesday 2nd June 2026** – Canyon today launches its new Loamr Clip and Loamr Flat MTB shoes, developed for trail and park riders seeking increased support, protection, and pedal control across technical terrain.

Available in two versions - a clipless model and a flat-pedal model - the Loamr range has been designed around the different demands of each pedal platform, with both models sharing reinforced uppers, BOA® fit systems, and Vibram rubber outsoles.

Compared to Canyon's more pedal-focused Scampr shoe, Loamr introduces increased stiffness, cushioning, and upper protection for riders tackling rougher and more demanding trails and varied terrain.

Loamr shoes are designed to pair perfectly with such Canyon models as Neuron, Spectral, Grand Canyon and Stoic.

### **Developed around the rider's connection to the bike**

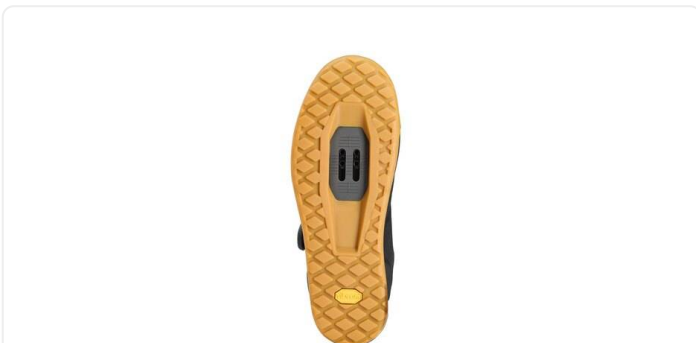
The goal with the new Lomar range was to create footwear that improves support, stability, and control while maintaining comfort during long days on technical terrain.

The name Loamr draws inspiration from the pursuit of the perfect underfoot feeling - supreme grip and traction, no matter the conditions. "Hero dirt," or loam, is the perfect blend of soil composition and moisture - a surface that allows tires to bite in while still offering enough support to hold up, giving riders that sticky, almost endless grip every mountain biker dreams of.

### **Separate designs for clipless and flat-pedal riders**

Canyon developed the **Loamr Clip** and **Loamr Flat** independently to reflect the different performance requirements of clipless and flat-pedal riding.

The Loamr Clip is designed for riders using clipless pedals on technical trails and park terrain. A stiffer internal plate provides a more stable pedalling platform, balancing pedalling efficiency with vibration protection on rough terrain.



An asymmetrical collar adds support around the ankle while maintaining freedom of movement, and an external TPU toe cap protects against impacts from rocks and roots.

The Loamr Flat focuses on grip, mobility, and pedal feel for riders using flat pedals. A lower-cut collar improves range of motion around the ankle, while an internal nylon plate balances pedal support with flexibility and vibration damping.



The outsole has also been designed to optimise engagement with Canyon flat pedal pins, with the three rear pedal pins positioned to engage consistently with the sole.

### **Vibram outsoles tuned for different riding styles**

Both Loamr models use Vibram rubber compounds selected for their intended riding style.

The Loamr Clip features a Vibram Megagrip outsole developed for traction across wet rocks, loose dirt, and uneven terrain, alongside an extended cleat pocket for fit adjustment. The Loamr Flat uses a Vibram XS Ride

outsole designed to balance pedal grip, durability, vibration damping, and off-bike traction.



Both models also feature a low stack-height outsole design intended to position the foot closer to the pedal spindle for improved pedal feel and control.

### **Reinforced construction for year-round trail riding**

Across both models, Canyon uses a closed-surface synthetic upper intended to improve durability and protection in year-round riding conditions.

A mesh bootie construction creates a close, sock-like fit, while the BOA® Li2 dial and PerformFit wrap system allow riders to micro-adjust fit and distribute pressure evenly across the foot. The Loamr Flat uses an integrated rubber toe guard, while the Loamr Clip features an external TPU toe guard and reinforced upper prints for additional protection on technical trails.

### **Product highlights**

- Separate platform-specific designs for clipless and flat-pedal riders
- BOA® Li2 dial with PerformFit wrap closure system
- Low stack-height outsole design for improved pedal feel
- Reinforced synthetic uppers and toe protection for technical trail riding

- Vibram Megagrip outsole (Clip) and Vibram XS Ride outsole (Flat)



### **Weight, pricing and availability**

The Canyon Loamr Clip weighs 419g (size 42) and launches at €149.95. The Loamr Flat launches at the same price, weighing 336g (size 42). Both shoes are available in Black or Desert, from sizes 36-48.

They launch globally on Tuesday 2nd June 2026, available via [canyon.com](https://canyon.com) or the [Canyon App](#).

### **NOTES TO EDITORS:**

1. For additional images, see here:

- [Media kit: Loamr clip](#)
- [Media kit: Loamr flat](#)

## About Canyon

What started in founder Roman Arnold's garage has grown into the world's leading direct-to-consumer bicycle manufacturer. Renowned as one of the most innovative brands in the industry, Canyon designs bikes for every discipline – from road, triathlon and gravel to mountain, city, trekking, and e-bikes.

Canyon partners with the finest athletes and teams on the planet, taking insights from the toughest race conditions to engineer bikes and components for the highest levels of the sport. The result: award-winning bikes that set the standard for performance, innovation, and engineering – built to deliver at the highest level on any terrain.

"Pure Cycling" is the mission driving Canyon to ignite a passion for cycling around the world thanks to a streamlined direct-to-consumer model, smart digital services, and Canyon Stores and service partners offering expert advice, community experiences, and full support. At the same time, Canyon is committed to responsible business practices, sustainable production, and the safety and well-being of employees, partners, and the environment.

Canyon bikes are available at canyon.com, through the Canyon app, and at selected Canyon Stores worldwide.

## Contact details

**Ben Hillsdon**

Director of Communications

## Copy link

<https://media-centre.canyon.com/en-INT/265868-canyon-s-new-loamr-mtb-trail-and-park-riding-shoes-designed-to-offer-supreme-grip-and-traction/>