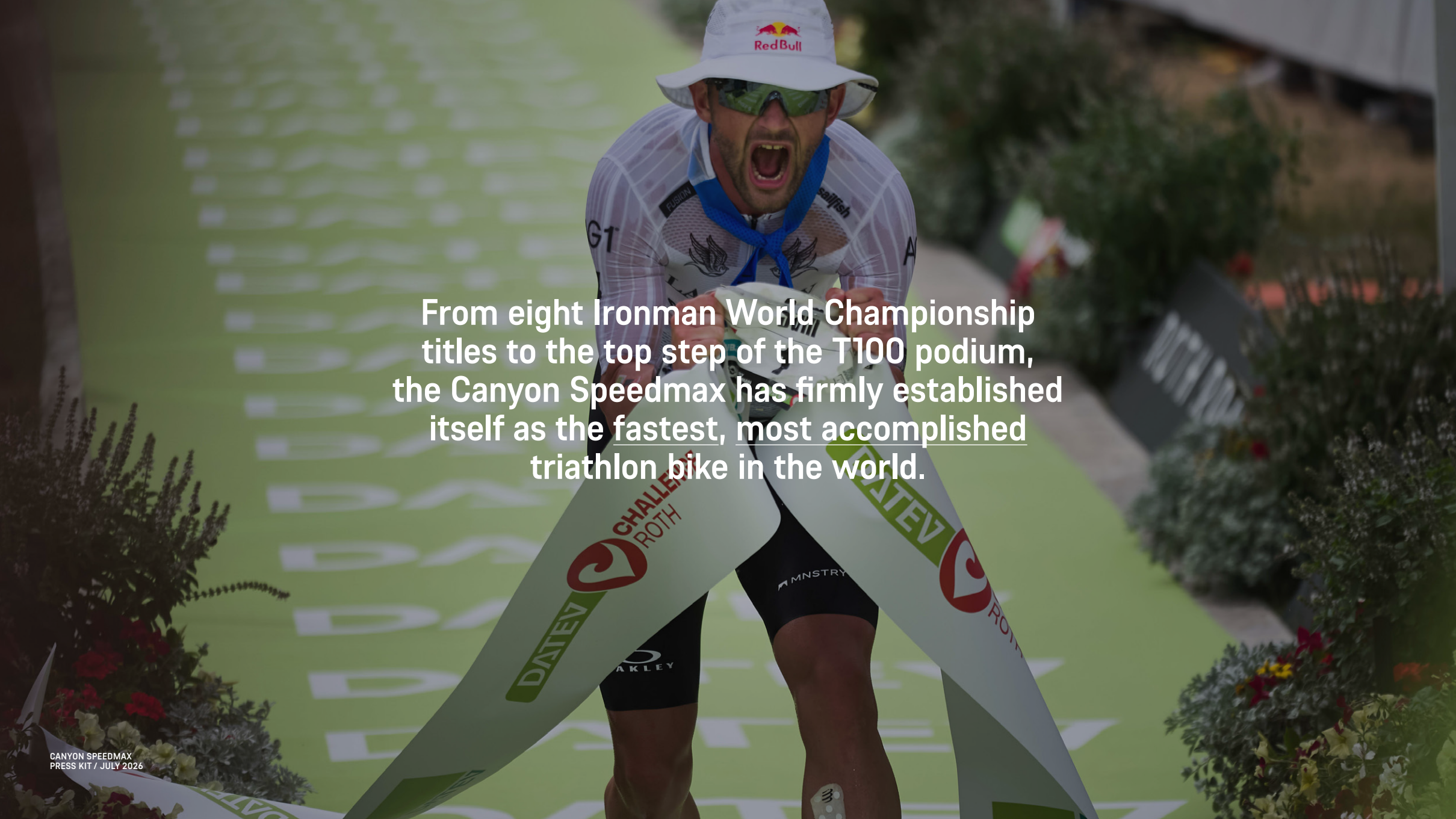


# Speedmax

## CFR, CF SLX



- 01 Introduction**
- 02 Shifting focus**
- 03 Introducing: AeroID**
- 04 AeroShield**
- 05 AeroFuel**
- 06 AeroFit**
- 07 AeroBase**
- 08 Pure personal. Pure cycling.**
- 09 Speedmax CFR portfolio**
- 10 Speedmax CF SLX portfolio**
- 11 Geometry**



From eight Ironman World Championship titles to the top step of the T100 podium, the Canyon Speedmax has firmly established itself as the fastest, most accomplished triathlon bike in the world.

Beyond its racing success, the Speedmax is also the most popular bike among the triathlon community, taking the number one spot in bike counts at the sport's most iconic events, from Challenge Roth to the Ironman World Championships.

# Launched in 2021, the 5<sup>th</sup> generation Speedmax CFR still tests fastest in the wind tunnel against today's key competitors.

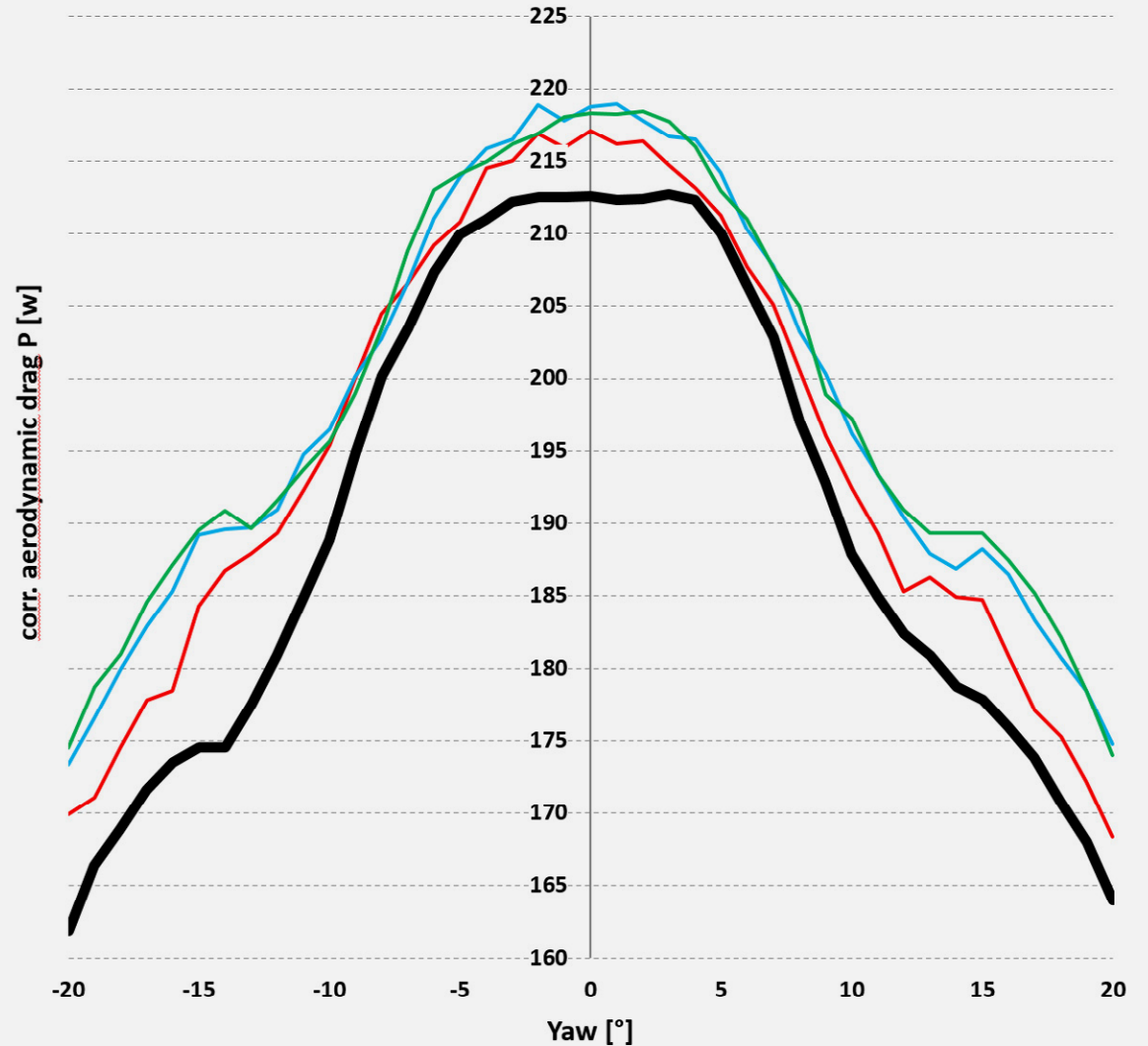
GEN. 5 SPEEDMAX CFR:  
198 W

SCOTT PLASMA 6:  
+ 3.8 W

CUBE AERIUM C:68X:  
+ 6.9 W

TREK SPEED CONCEPT:  
+ 7.1 W

Testing protocol: Our wind tunnel testing reveals frameset drag at 45 km/h across a  $-20^{\circ}$  to  $+20^{\circ}$  yaw sweep. Calculated deltas represent the weighted aerodynamic drag integrated across this entire yaw spectrum, utilising a numerically validated weighting algorithm. All setups are tested with the same drivetrains and wheel-tyre configurations, and cockpits are restricted to basebar only. Tests are carried out with Ferdi, our leg dummy, to show impact of rider's legs pedalling on airflow.



**A high bar, but how to raise it?  
That was challenge the Canyon R&D Team  
set themselves for the next generation  
of triathlon race bike:**

**Take the best. Make it even better.**

**Pro-level performance, straight out-the-box,  
the aim for the new Speedmax was to  
create fastest, most intuitive and adaptable  
triathlon bike the sport has ever seen.**

**For professionals.  
For age-groupers.  
For all.**

**Pure personal.  
Pure cycling.**



## SHIFTING FOCUS

The fastest frameset is just a baseline. Over 70% of drag comes from the rider.

At the sharp end of triathlon, we've been partnering with the world's top athletes for years. The likes of Laura Phillip, Sam Laidlow, Kat Matthews and Patrick Lange have achieved great success on bespoke setups tailored to their body shapes, their profiles as athletes, and the challenges of each course. Experience gained here provides our engineers a wealth of data to identify patterns from their winning setups.

To take Speedmax to the next level for everyone, we had to shift our focus.

From the fastest bike to the fastest performance system.

From pro-exclusive prototypes to pro-level solutions for all athletes.

## Introducing AeroID

Applying learnings from our pros' custom-made prototype solutions, we've brought together a production-ready system that any athlete can adapt to create their personal fastest setup.

We call it AeroID:  
The passport to aero perfection.

From fit to fuelling,  
AeroID is built upon four core pillars:

### **AeroShield**

THE WORLD'S  
FASTEST,  
MOST ADJUSTABLE  
COCKPITS.

### **AeroFuel**

TURNING STORAGE  
INTO SPEED.

### **AeroFit**

SIMPLE, STEPLESS  
ADJUSTABILITY  
FOR THE PERFECT POSITION.

### **AeroBase**

THE BEST  
RIDING SPEEDMAX  
EVER.

## AeroShield:

Previously only seen on the setups of sponsored professionals, AeroShield is a groundbreaking concept that brings bespoke closed cockpit performance to all racers.

The closed structure is critical for guiding airflow around the athlete and boosting aero performance, while the increased contact patch and raised sidewalls result in greater comfort as well as more stability and control when locked in the aero tuck.

This is the most adaptable cockpit in triathlon, fully adjustable in width, length, and grip angle – a true ergonomic benchmark.





**Adjustable Grips**

ADJUSTABLE GRIP ANGLE  
ADJUSTABLE GRIP SPACING  
ERGON GRIPS

**Adjustable  
Extension Length**

70 MM ADJUSTMENT RANGE

**Raised Side Walls**

POSTURE SUPPORT FOR  
NARROW POSITIONS  
IMPROVES STEERING CONTROL

**Ergonomic Padding**

OPTIMAL PRESSURE DISTRIBUTION  
CONTROL ENHANCING SURFACE TEXTURE  
MEDICAL-GRADE FOAM

**Adjustable  
Armpad Width**

200-275 MM ON AEROSHIELD S/M  
225-300 MM ON AEROSHIELD L/XL

## AeroShield Pro:

For the most committed athletes, AeroShield Pro unlocks peak speed. Refined and proven as a prototype with two Ironman World Championship victories, AeroShield Pro is now available to upgrade for every athlete with seven different sizes to choose from. Its lightweight monocoque construction is 300 g lighter than the standard AeroShield, with its sleek form saving an additional 3 watts at 45 km/h.

The performance of AeroShield Pro is built on a robust foundation of data. After analysing 183 individual forearm geometries, we defined seven finely tuned architectures based on two primary parameters: forearm circumference and forearm length. Unlike the standard AeroShield, this cockpit utilises fixed-width shells to minimise frontal area and maximise stability.



**AEROSHIELD PRO:  
WIDTH OPTIONS**



**215 mm Narrow**  
LENGTH OPTIONS: SHORT, MEDIUM, LONG



**230 mm Medium**  
LENGTH OPTIONS: SHORT, MEDIUM



**230 mm Wide**  
LENGTH OPTIONS: MEDIUM, LONG

**AEROSHIELD PRO:  
LENGTH OPTIONS**

**Short**

**WIDTH OPTIONS: NARROW, MEDIUM**



**Medium**

**WIDTH OPTIONS: NARROW, MEDIUM, WIDE**



**Long**

**WIDTH OPTIONS: MEDIUM, WIDE**



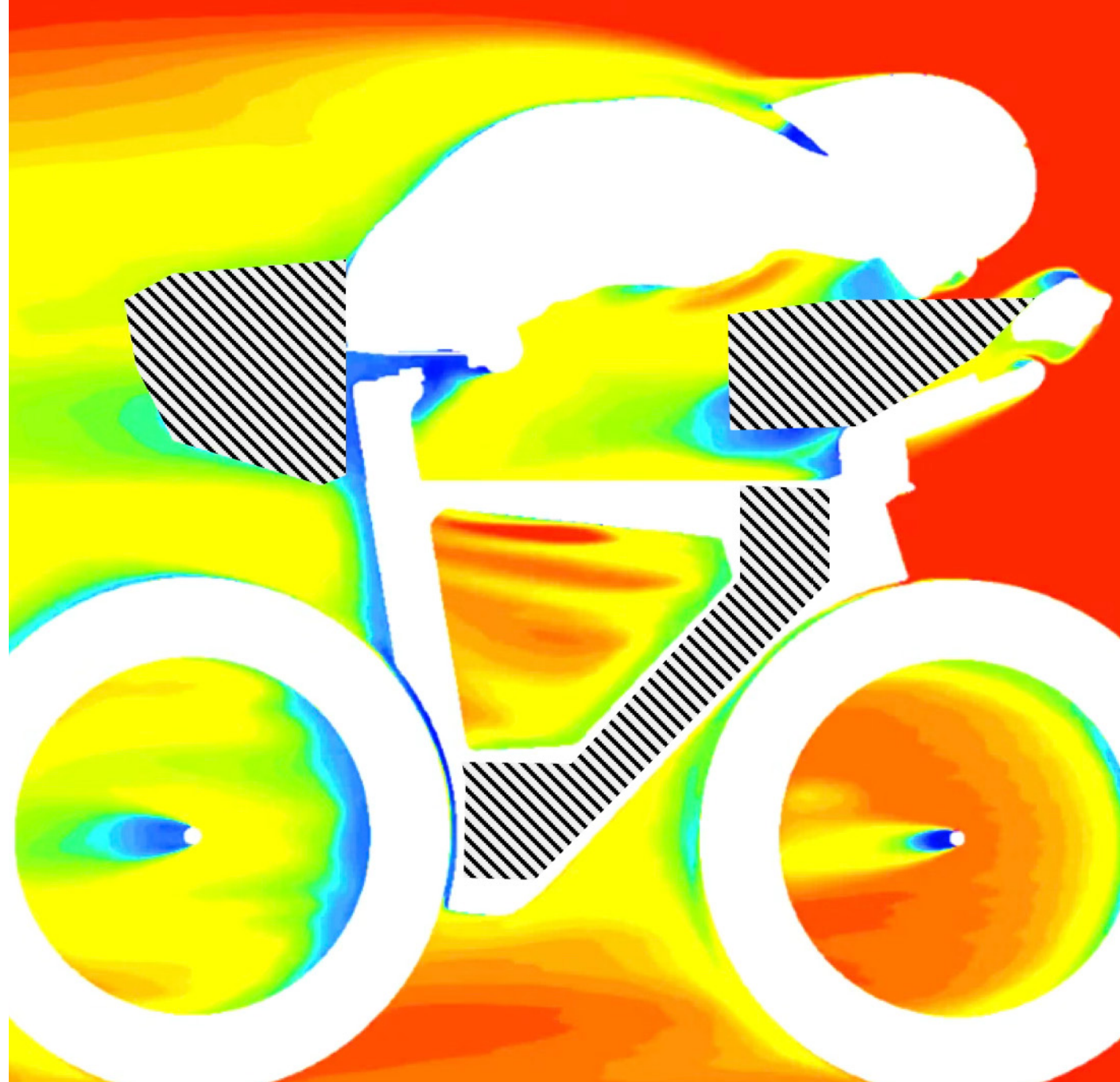
## AeroFuel:

Building on the cockpit, the next component of AeroID turns storage into speed. With the revolution in carbohydrate intake having a significant impact on performance, AeroFuel lets athletes carry as much personal nutrition as possible so they can breeze through aid stations and keep their fuelling strategy on track, where it belongs.

Drink mix, gels or chews, whatever works for the individual, AeroFuel provides modular storage options with volume strategically placed across the bike for optimal aero performance.

A total capacity for over 3500 ml of liquids from the cockpit, integrated inside the frame and behind the rider enables an unrivalled amount of on-bike fuelling potential.

All AeroFuel solutions across the new Speedmax are fully competition-legal, so there's no stress for the athlete when checking in pre-race.



**AEROFUEL:  
PARTS**

**Splitter Plate Pro**

Carbon monocoque seatpost structure allows bottles at various heights and positions.

**Frame Hydration**

Easy-to-remove frame bladder with between 650-850 ml capacity depending on frame size, optimised for on-bike refills.

**AeroModule**

Modular, between-the-arms storage providing direct access to fuel and hydration.



## AeroFuel: AeroModule

AeroModule sits between the rider's arms providing direct access to fuel and hydration. Liquid, gel flask or solid fuel storage, multiple modules are available to attach via a tool-free click mechanism. The system fills the void between the forearms to stabilise airflow around the cockpit providing an aerodynamic drag reduction of up to 7 watts at 45 km/h.



### AeroModule Load 300

Baseline configuration. The lightest, lowest-profile setup. Included as standard with every Speedmax CF SLX and Speedmax CFR.

### AeroModule Load 650

Taller variant of Load 300 with additional storage volume.

### AeroModule Fuel 650

A dedicated liquid or gel reservoir with hose, contoured to the rider's forearms.

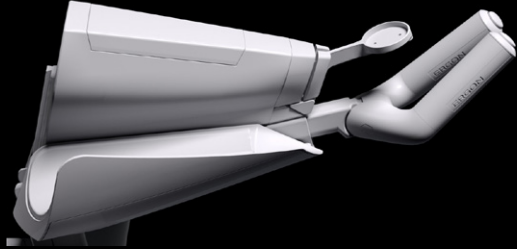
Included as standard with every Speedmax CFR.

### AeroModule BTC Beam

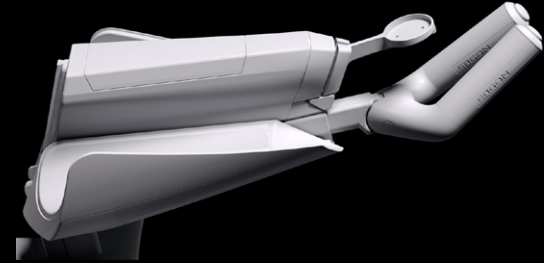
Multi-purpose rear section. Standard bottle cage interface for aid station resupplies with elastic band for security.

Tapered storage beneath cage for 2-3 gels. Included as standard with every Speedmax CFR.

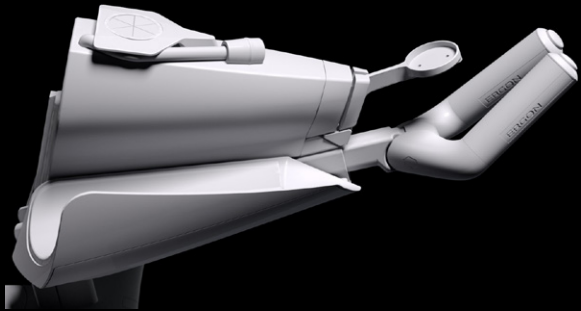
LOAD 300



LOAD 650



FUEL 650



BTC BEAM



## AeroFuel: Splitter Plate Pro

A concept tested and refined in partnership with Canyon pros across multiple seasons, Splitter Plate Pro is a fin structure that channels airflow between the legs and enables the modular placement of one or two bottles behind the rider's glutes. Occupying the area of maximum rider-induced wake, the bottles fill the void to reduce drag. The carbon monocoque construction adds only 76 g over the standard Speedmax seatpost.

Extensive wind tunnel testing and athlete feedback also inspired the development of the Horizontal Bottle Adapter. This component provides a range of fore-aft and vertical adjustment, enabling athletes to position hydration significantly higher and tighter against the glutes, regardless of saddle model or setback. The system not only optimises airflow attachment but also brings hydration within easier reach, ensuring functionality matches aerodynamic efficiency.



## AeroFit:

When the rider themselves accounts for over 70% of overall drag, their position becomes the most decisive lever in aerodynamic optimisation. AeroFit is where precision meets simplicity with an industry-leading fit range that supports even the most extreme positions.



## AeroFit: Cockpit Post Technology

Key to AeroShield's benchmark adjustment range is our new Cockpit Post technology.

By applying the mechanical principles of the seatpost to the front end, this system enables stepless adjustment of stack, reach, and angle in seconds. The result is a bike that combines the limitless adjustability of a lab fitting bike with the seamless integration of a world-class race bike.

Just as a seatpost slides into the frame, the Cockpit Post slides into the head tube and is secured by a clamp and two easy-access bolts. To prevent interference with the fork crown at lower stack settings without requiring the post to be cut, the system features three pre-sized Short, Mid and High lengths to achieve the desired stack height.

Each length offers an adjustment of a minimum of 35 mm depending on frame size. All three lengths combined cover a huge range of 105 mm total stack adjustment.

Stack adjustment range across frame sizes:

LOW

Across all frame sizes:  
0–35 mm

MID

S: 35–70 mm, M: 30–70 mm,  
L: 25–70 mm, XL: 20–70 mm

HIGH

S: 70–105 mm, M: 65–105 mm,  
L: 60–105 mm, XL: 55–105 mm

Athletes looking for complete flexibility can select the "High" option and have a professional mechanic trim the cockpit post down to their desired length.

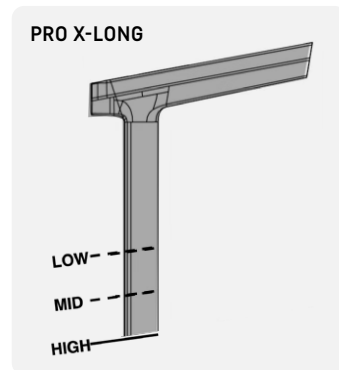
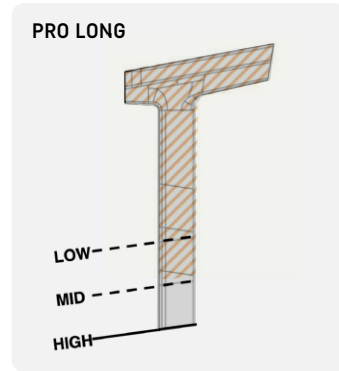
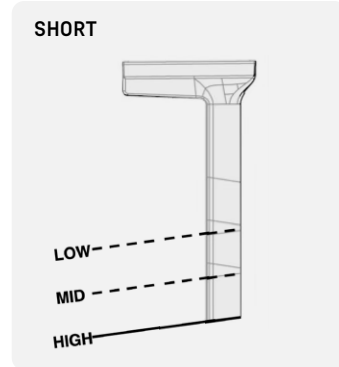


## AeroFit: Cockpit Post Technology

In addition to stack, three options for length, Short, Long, and X-Long cover the full reach spectrum, from conservative to radical positions that push the limits of current regulations. Each individual post enables 50 mm fore-aft adjustment, with all three posts combined covering a 150 mm reach range.

Finally, to achieve the perfect forearm angle, the clamping mechanism on every post allows for 0-20° of stepless tilt adjustment.

There are two distinct base setups: Standard with 10° base tilt enabling a maximum 30° tilt angle, and a Pro version with 20° base tilt enabling a maximum 40° tilt angle. Short posts are only available with Standard tilt settings, Long covers both Standard and Pro tilt settings, and the X-Long post is only available with Pro tilt settings.





## AeroFit: PPS 2.0

Before fine-tuning can begin, you have to be in the right ballpark. Ordering a new Speedmax from Canyon.com is straightforward thanks to our revised Perfect Positioning System 2.0 fit recommendation.

PPS 2.0 offers Speedmax customers two distinct pathways: either inputting their current bike fit data to transfer positions, or using our advanced algorithm-based position calculator. The latter allows the athlete to input specific positional preferences (ranging from comfort-oriented to highly aggressive) alongside basic physiological data to determine their baseline fit profile.

Regardless of the chosen pathway, the result is identical: each new Speedmax is pre-configured by our assembly team and delivered with the optimal adjustment window immediately accessible, eliminating the time and financial costs associated with swapping components or rebuilding cockpits.

For the final touch, a premium torque wrench is delivered with each bike for total accuracy and confidence in the setup, and all key adjustment screws are TX25 standard for direct engagement.

The perfect fit, straight out of the box, our most advanced Speedmax is simpler and more precise to work on than ever before.





## AeroBase:

**AeroBase, is the core frameset of the Speedmax. Merging the previous generation's benchmark aerodynamics with new, progressive geometries and cutting-edge construction, this is the best riding, most confidence-inspiring Speedmax ever.**



### Geometry

A key requirement from Canyon pros was a better fit range for smaller athletes. Frame sizes S and XS have been merged with the new size S offering a minimum saddle height (from 630 mm) nearly identical to the previous XS, but now rolling on 700c wheels instead of smaller 650b wheels. This ensures all athletes have access to the full range of high-performance tyre and wheel options.

Sizes for M through XL are now aligned with our road bike range in terms of saddle height, shifting the range downwards to allow smaller riders to ride larger frames to gain more reach.

The result: geometries optimized for modern aero positions with significantly improved, confidence-boosting riding stability.

### Integration

Lighter, faster, yet still built for the real world and real competition, the Speedmax frame houses tool pouch storage at the bottom bracket for rapid mid-race repairs with space for capacity two CO<sub>2</sub> cartridges, a Canyon FIX 3-in-1 minitool, and a spare TPU tube.

Frame hydration bladder capacity also increases across all sizes over the previous generation by utilising the full length of the down tube. The entire system has been re-engineered for better usability under race conditions with a simplified top-fill enabling fast refills. The soft bladder and cap are detachable without tools, with the bladder available as a dedicated spare part for simple maintenance down-the-line.

### Construction

While aero remains the focus for any triathlon bike, weight also sets the new Speedmax apart from the competition. Its design has been optimised and simplified for structural integrity, most evident by the removal of the previous generation's top tube storage compartment and its replacement with more efficient storage within the AeroModule, leading to an increase in the top tube's geometric stiffness.

Combined with an advanced blend of carbon fibres laid up by industry-leading experts, the Speedmax CFR frameset shaves an impressive 250 g over its predecessor, translating to up to half a kilo fully built and ready-to-ride.

To make the new Speedmax future-proof, the frame is UDH compatible and has clearance for 31 mm tyres (plus ISO clearance). Maximum chainring sizes are 60t for 1x setups, 56/43 for 2x SRAM and 58/44 for 2x Shimano.

Pure personal.  
Pure cycling.

The new Speedmax CFR and CF SLX represent the pinnacle of Canyon engineering and innovation.

Over 50 new components have been developed from scratch for the 6<sup>th</sup> generation to enable every athlete to fully unleash their aerodynamic potential and customise a bike that outperforms pro-exclusive bikes of the past.

Straight  
out of  
the box.



## **MYCANYON** CUSTOM MADE

All new Speedmax CFR and Speedmax CF SLX models are available in the MyCanyon customisation programme (restrictions apply in certain markets).

All bikes have the option to change or upgrade the cockpit, cockpit post, crank length and saddle.

Speedmax CF SLX 8 models can be upgraded with the Splitter Plate Pro seatpost (equipped as standard on the Speedmax CFR).

Speedmax CFR models offer a choice of DT Swiss or Zipp 454 or 858 wheels, plus rear disc options

Our MyCanyon program for Speedmax CFR also provides access to exclusive artworks for bikes that truly stand out whether on course or parked in transition.

**SPEEDMAX CF SLX  
LINEUP**

**Speedmax CF SLX / Cosmic Dust**



**Speedmax CF SLX / Lava Red**



**Speedmax CF SLX / Glacier**



**Speedmax CF SLX / Lavender**



**Speedmax CF SLX / Deep Ocean**



**SPEEDMAX CFR  
LINEUP**

**Speedmax CFR / Pro Black**



**Speedmax CFR / Pro White**



**Speedmax CFR / Paradigm Shift\***



**Speedmax CFR / Midnight Prism\***



**Speedmax CFR / Silver Surfer\***



**Speedmax CFR / Henize\***



\*Available in the MyCanyon  
customisation programme.

GEOMETRY

	Speedmax SLX 7	Speedmax SLX 8 Di2	Speedmax SLX 8 AXS	Speedmax CFR Di2	Speedmax CFR AXS
Cockpit	AeroShield	AeroShield (Pro* +500 €)	AeroShield (Pro* +500 €)	AeroShield (Pro* +500 €)	AeroShield (Pro* +500 €)
Aeromodule	Load 400 (always included) + Fuel 650 (+100 €) + Load 650 (+70 €) + Fuel 650 / BTC Beam (+200 €) + Load 650 / BTC Beam (+170 €)	Load 400 (always included) + Fuel 650 (+100 €) + Load 650 (+70 €) + Fuel 650 / BTC Beam (+200 €) + Load 650 / BTC Beam (+170 €)	Load 400 (always included) + Fuel 650 (+100 €) + Load 650 (+70 €) + Fuel 650 / BTC Beam (+200 €) + Load 650 / BTC Beam (+170 €)	Load 400 (always included) + Fuel 650 (+100 €) + Load 650 (+70 €) + Fuel 650 / BTC Beam (+200 €) + Load 650 / BTC Beam (+170 €)	Load 400 (always included) + Fuel 650 (+100 €) + Load 650 (+70 €) + Fuel 650 / BTC Beam (+200 €) + Load 650 / BTC Beam (+170 €)
Front Derrailleur	Shimano 105 Di2	Shimano Ultegra Di2	SRAM Force E1 AXS	Shimano Dura-Ace Di2	SRAM Red E1 AXS
Rear Derrailleur	Shimano 105 Di2	Shimano Ultegra Di2	SRAM Force E1 AXS	Shimano Dura-Ace Di2	SRAM Red E1 AXS
Crankset	Shimano 105 52/36 + 4iiii single-sided powermeter	Shimano Ultegra 52/36 + 4iiii single-sided powermeter	SRAM Force E1 AXS + single-sided powermeter	Shimano Dura-Ace Di2 + dual-sided powermeter	SRAM Red E1 AXS + dual-sided powermeter
Cranklength	165 mm	165 mm 160 mm* (+0 €) 170 mm (+0 €) 172,5 mm (+0 €) 175 mm (+0 €)	165 mm 160 mm* (+0 €) 170 mm (+0 €) 172,5 mm (+0 €) 175 mm (+0 €)	165 mm 160 mm* (+0 €) 170 mm (+0 €) 172,5 mm (+0 €) 175 mm (+0 €)	165 mm 160 mm* (+0 €) 170 mm (+0 €) 172,5 mm (+0 €) 175 mm (+0 €)
Shift/Brake Lever	Shimano Dura-Ace Di2	Shimano Dura-Ace Di2	SRAM Wireless Blips	Shimano Dura-Ace Di2	SRAM Wireless Blips
Brakes	Shimano Ultegra	Shimano Ultegra	SRAM Force E1	Shimano Dura-Ace	SRAM Red E1
Brake Rotors	Shimano CL 700	Shimano CL 800	SRAM Paceline	Shimano CL 900	SRAM Paceline X
Chain	Shimano Ultegra	Shimano Ultegra	SRAM Force E1	Shimano Dura-Ace	SRAM Red E1
Cassette	Shimano 105 11-34	Shimano Ultegra 11-34 Shimano Ultegra 11-30* (+0 €)	SRAM Force E1 10-33* SRAM Force E1 10-36 (+0 €)	Shimano Dura-Ace 11-34 Shimano Dura-Ace 11-30* (+0 €)	SRAM Red E1 10-33* SRAM Red E1 10-36 (+0 €)
Wheelset	DT Swiss ARC1600 65/85	DT Swiss ARC1600 65/85	DT Swiss ARC1600 65/85	DT Swiss ARC 1100 85/85 DT Swiss ARC 1100 65/85 (+0 €) DT Swiss ARC 1100 85/Disc (+1.000 €) Zipp 858/858 NSW (+1.000 €) Zipp 454/858 NSW* (+900 €) Zipp 858 NSW / Super 9 Disc (+1.500 €)	DT Swiss ARC1100 65/85 DT Swiss ARC1100 85/Disc (+1.000 €) DT Swiss ARC1100 65/85 (+0 €) Zipp 858/858 NSW (+1.000 €) Zipp 858 NSW/Super 9 (+1.300 €) Zipp 454/858 NSW (+900 €)
Tires	Front: Continental Aero 111, 26 mm Rear: Continental 5000 TT TR, 28 mm	Front: Continental Aero 111, 26 mm Rear: Continental 5000 TT TR, 28 mm	Front: Continental Aero 111, 26 mm Rear: Continental 5000 TT TR, 28 mm	DT Swiss wheelset: Front: Continental Aero 111, 26 mm Rear: Continental 5000 TT TR, 28 mm Zipp wheelset (+0 €): Front: Pirelli P ZERO Race SL-R, 28 mm* Rear: Pirelli P ZERO Race SL-R, 28 mm*	DT Swiss wheelset: Front: Continental Aero 111, 26 mm Rear: Continental 5000 TT TR, 28 mm Zipp wheelset (+0 €): Front: Pirelli P ZERO Race SL-R, 28 mm* Rear: Pirelli P ZERO Race SL-R, 28 mm*
Saddle	Fizik Transiro R5 LD Ergon SR Tri WMN CF (+100 €) Ergon SR Tri Men CF (+100 €) Fizik Transiro R1 LD Adaptive (+200 €) Prologo Predator* (+250 €)	Fizik Transiro R5 LD Ergon SR Tri WMN CF (+100 €) Ergon SR Tri Men CF (+100 €) Fizik Transiro R1 LD Adaptive (+200 €) Prologo Predator* (+250 €)	Fizik Transiro R5 LD Ergon SR Tri WMN CF (+100 €) Ergon SR Tri Men CF (+100 €) Fizik Transiro R1 LD Adaptive (+200 €) Prologo Predator (+250 €)	Fizik Transiro R1 LD Ergon SR Tri WMN CF (+0 €) Ergon SR Tri Men CF (+0 €) Fizik Transiro R1 LD Adaptive (+100 €) Prologo Predator (+150 €)	Fizik Transiro R1 LD Ergon SR Tri WMN CF (+0 €) Ergon SR Tri Men CF (+0 €) Fizik Transiro R1 LD Adaptive (+100 €) Prologo Predator (+150 €)
Seatpost	SP102 (Standard)	SP102 (Standard*) Splitterplate Pro +250 €	SP102 (Standard*) Splitterplate Pro +250 €	Splitter Plate Pro + Horizontal Bottle Adapter	Splitter Plate Pro + Horizontal Bottle Adapter
Colors	Cosmic Dust*, Lava Red, Glacier, Light, Lavender, Deep Ocean	Cosmic Dust*, Lava Red, Glacier, Light, Lavender, Deep Ocean	Cosmic Dust*, Lava Red, Glacier, Light, Lavender, Deep Ocean	Pro Black*, Pro White Paradigm Shift, Midnight Prism, Silver Surfer, Henize (all +500 €)	Pro Black*, Pro White Paradigm Shift, Midnight Prism, Silver Surfer, Henize (all +500 €)
Weight	from 9.55 kg	from 9.02 kg	from 8.88 kg	from 8.65 kg	from 8.48 kg
RRP:	6.499 €	7.999 €	7.999 €	11.000 €	11.000 €

KEY

Standard Specification

Upgrade Option

\*Lightest Option

**CANYON**