

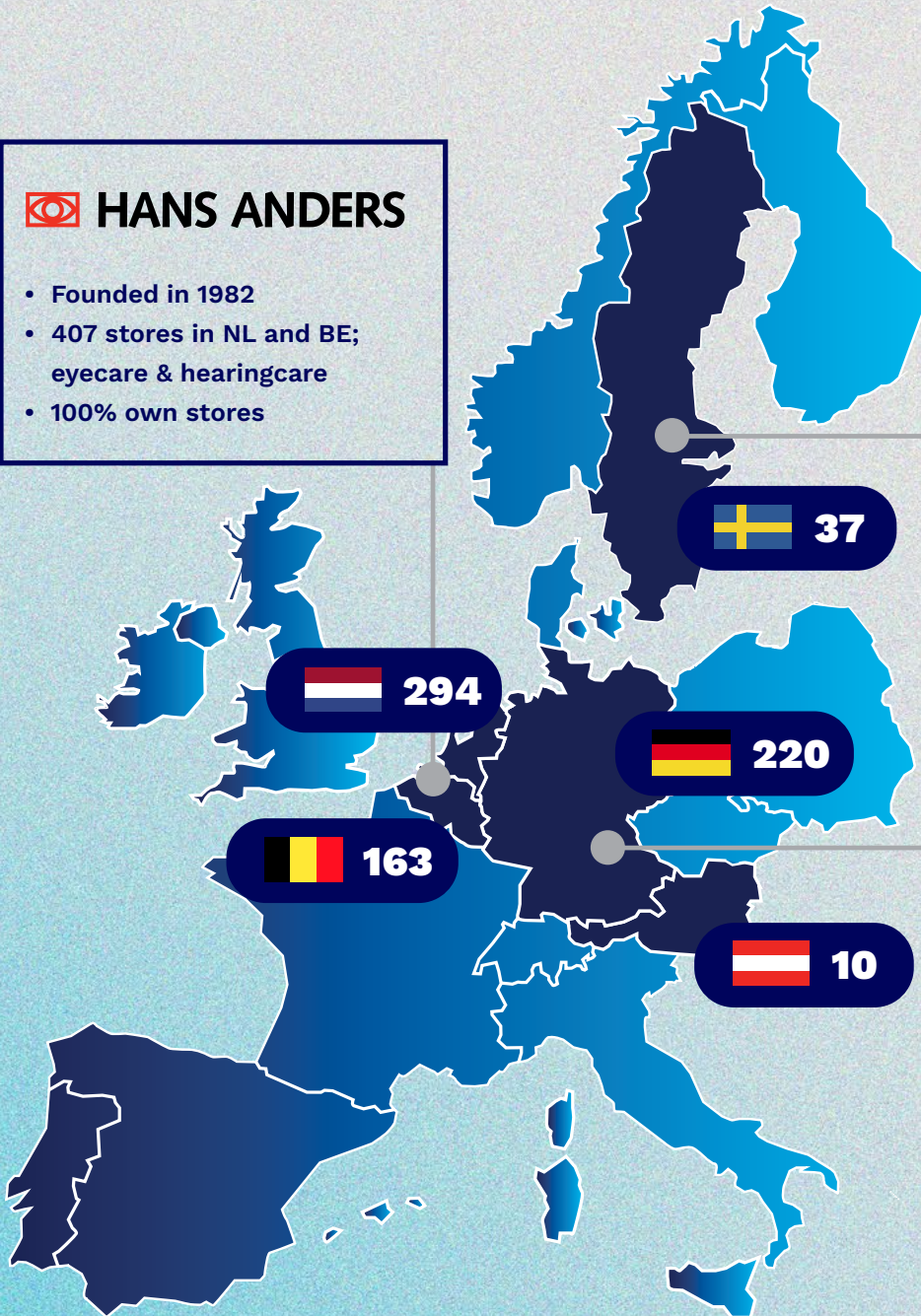
GEOGRAPHIC FOOTPRINT

 **HANS ANDERS**

- Founded in 1982
- 407 stores in NL and BE; eyecare & hearingcare
- 100% own stores

 **DIREKT OPTIK**

- Acquired under previous owners in 2013
- 37 stores in Sweden
- 56% own stores, 44% franchise

 eyes+more[®]

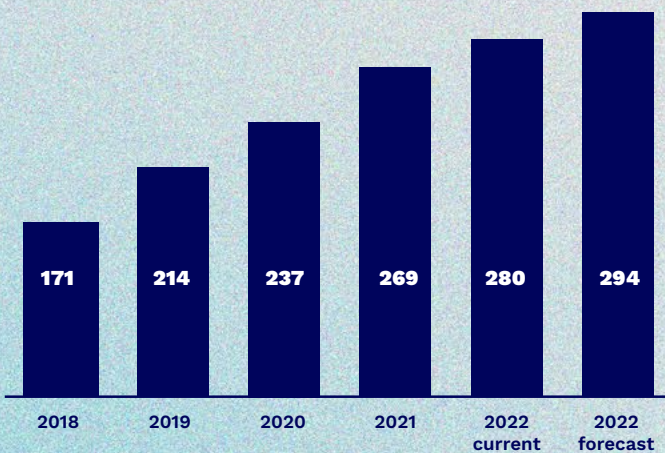
- Acquired in 2018-2019
- 280 stores in DE, NL, BE and AT
- 93% own stores, 7% franchise

- Nexeye is a European leader in optical value-for-money retail, on a mission to make good eyecare affordable and easily accessible for everyone.
- Founded in Rotterdam (NL) in 1982, headquartered in Gorinchem (NL).
- 95% own stores, 5% franchise.
- Over 4000 employees.

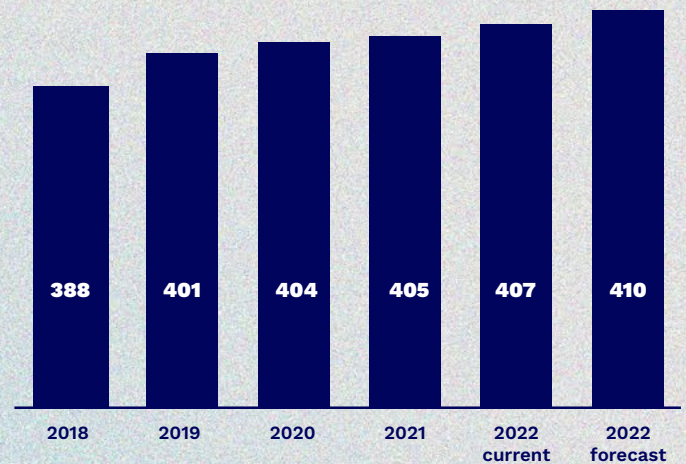
GROWTH NEXEYE STORES



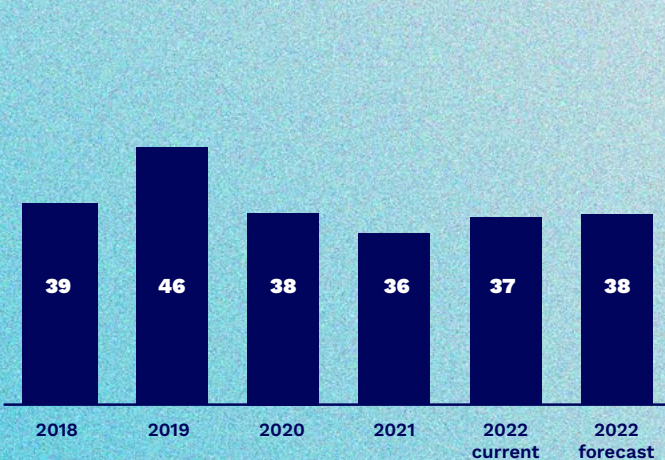
GROWTH EYES + MORE STORES



GROWTH HANS ANDERS STORES



GROWTH DIREKT OPTIK STORES



GROWTH NEXEYE STORES

