

# VanMoof S6 Press Deck

*2026*

VANMOOF



# Building on...

---



*11 years of experience*

---



*Direct feedback from over 3,000 riders*

---



*The knowledge flowing from developing 5 generations of electric bikes*

---



*Input from our ever-expanding international partner network*

---



*Extensive data from 200,000 riders*

---



*The deep engineering experience of McLaren Applied*

---

...we have now created our ultimate e-bike

# The all-new

# S6

VANMOOF

Ride like no other

S6

**Built for total harmony between rider and road, the S6 is the culmination of 5 generations and 11 years of e-bike innovation. Every element has been reimagined or newly designed in collaboration with McLaren Applied. It's the definitive expression of everything we've created. Now with an extra year warranty (on us).**

# S6

# POWERFUL LIKE NO OTHER

The feel of more power. None of the compromises. The S6 hasn't just been upgraded, it's been unleashed.

A more responsive **Boost Button** fires you forward faster. Think of it as your launchpad after every green light.

The brain at the core of every VanMoof ride. **Control Core** powers our most iconic features with next-gen precision. It's the strongest system we've ever built, and it's engineered for the long ride.

Real power isn't just fast, it's unfazed. The new **Suspension Seatpost** lets you glide through the city's worst terrain without losing flow. Unshaken, unstirred.



# SMART LIKE NO OTHER

Riding the S6 is like having a co-pilot, minus the small talk.

It's not just smart, it's nearly telepathic. The **VanMoof App** lets you tailor your ride in seconds and glide through the city with bike-first navigation that always knows the way.

Forget gear changes. The improved **AutoShift Hub** shifts automatically by sensing your speed to adjust in real time for seamless, smart momentum.

Always know where your bike is. **Find My** connects it directly to your Apple network, so you can find it wherever you are.



# SECURE LIKE NO OTHER

## Thieves hate the S6.

The **Anti-Theft System** locks, alarms and tracks. In real time. This isn't security, it's a digital bodyguard wrapped around your ride at all times.

The S6 comes armed with a **Gen 6 Kick Lock** that activates with a simple tap. No dragging chains. No fumbling keys. It's faster to engage, fully waterproof, and built to respond instantly.

If someone tries to steal your S6, we've got your back. If the **dynamic alarm** doesn't stop them, VanMoof's most advanced built-in **location tracking** will help you track it down fast.



**More sleek. More minimal. More iconic than ever. With three new colourways designed to adapt to shifting city light, the S6 stands out whenever you ride.**



# Color intro

Electric Blue



VANMOOF

VanMoof S6 Press Deck




● Drift Black

VANMOOF

VanMoof S6 Press Deck



 Pearl Mint





VANMOOF

VanMoof S6 Press Deck



# SPECS

## VanMoof S6 & S6(open)

Power	<p><b>Front wheel hub motor</b> Power: 250W Boost torque: 68 Nm Torque sensor 4 power levels</p> <p><b>Custom-designed Panasonic battery</b> Capacity: 487Wh 48V Integrated 26 cells Removable for servicing</p> <p><b>Range</b> Full power ~ 37 miles Economy mode ~93 miles</p>	<p><b>Charger</b> 48V 2A 2h 30 min (50% to 100%) 4h 00 min (25% to 100%) Smart charger Software remotely updatable Size: 145 X 67 X 34 cm Weight: 0.6kg including AC and DC cord (EU Plug) Outlet to power adapter: 150 cm (59.05 in) Power adapter to bike: 180 cm (70.86 in) 2 color LED (Red and Green) Compatible with the S5, A5, S6, S6 (open)</p>	
Security	<p>Gen 6 Kick Lock with auto retract pin. Automatic rider recognition Alarm system Manual disarm with backup code</p>	<p>Anti-theft nuts and bolts Apple Find My Multi technology location/theft tracking</p>	
Size	<p>Unisex S frame: for riders 5'4"-6'9" Weight: 52 lbs Wheels: 27.5"</p>	<p>Unisex S (Open) frame: for riders 5'1"- 6'5" Weight: 50 lbs Wheels: 24"</p>	
Parts	<p><b>Lights</b> Gen 5 Hi-Vis Lights *EU/UK: ISO 6742-1 &amp; Germany: K mark Gen 6 Halo Light Display</p> <p><b>Handlebars</b> One-piece adjustable handlebar and stem Peak Design Slimlink™ Phone Mount codesigned with VanMoof</p> <p><b>Brakes</b> Front &amp; rear perforated Hydraulic Disc Brakes</p> <p><b>Gears</b> 3-Speed AutoHub</p> <p><b>Heavy Duty Kickstand</b></p>	<p><b>Chain Cover &amp; Tensioner</b> Fully enclosed silent drivetrain Automatic chain-tensioning system</p> <p><b>Saddle</b> One-piece integrated design</p> <p><b>Wheels</b> Anodized aluminum rims Stainless steel spokes VanMoof Gen 6 Tires with premium puncture protection</p> <p><b>Handlebars</b> Improved grips</p>	

# ADD-ONS

VanMoof  
S6 & S6(open)

Available  
approximately one  
month after launch

Front Rack	<p><b>Front Rack</b> Designed to carry up to 10 kg With an elastic cord to fasten items securely. Equipped with a front mount for bike light Outside dimensions: 408 x 336 x 162 mm Weight: 1.6 kg Material: Aluminium and Polycarbonate Compatible with S5, A5, S6 &amp; S6 (open)</p>	<p><b>Front Rack with Basket</b> Designed to carry up to 10 kg Includes elastic net to secure items Equipped with a front mount for bike light Dimensions: 410 x 340 x 170 mm Weight: 2.0 kg Material: Aluminium, Polycarbonate and Polypropylene Compatible with S5, A5, S6 &amp; S6 (open)</p>
Rear Racks	<p><b>Rear Rack S6</b> Designed to carry up to 15 kg Dimensions: 430 x 340 x 205 mm Weight: 0.6kg Compatible with S5 &amp; S6 Compatible with VanMoof small and large pannier bags</p>	<p><b>Rear Rack S6(open)</b> Designed to carry up to 15 kg Dimensions: 397 x 293 x 205 mm Weight: 0.62kg Compatible with A5 &amp; S6 (open) Compatible with VanMoof small pannier bags</p>
Heavy Duty Rear Racks	<p><b>HD Rear Rack S6</b> Designed to carry up to 27 kg Weight: 1.20kg Dimensions: 435 x 367 x 205 mm Width Rack: 135mm Diameter Tube: 15 mm Compatible with S5 &amp; S6 Compatible with VanMoof large pannier bags</p>	<p><b>HD Rear Rack S6(open)</b> Designed to carry up to 27 kg Weight: 1.20kg Dimensions: 440 x 350 x 205 mm Width Rack: 135mm Diameter Tube: 15mm Compatible with A5 &amp; S6 (open) Compatible with VanMoof large pannier bags</p>
New Accessories	<p><b>Suspension Seatpost</b> Finely adjustable spring tension Includes 2 coil springs (default and light) Suspension travel distance: 30mm Weight: 0.59 kg Length: 370 mm Seatpost diameter: 34 mm</p> <p><b>Phone Mount</b> Peak Design Slimlink™ Phone Mount codesignated with VanMoof</p>	

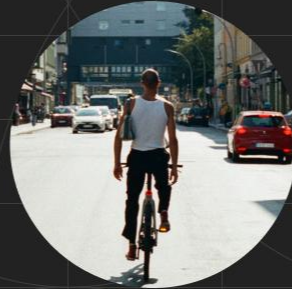


# VANMOOF REVOLUTIONISED THE WORLD OF BIKES



*VanMoof continues to be the bike of the future*

designboom



*Hands down the best ebike for the city*

GQ



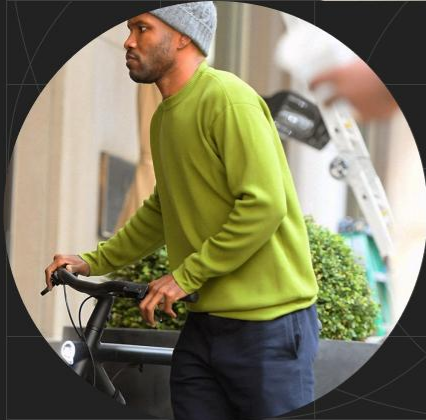
*Meet VanMoof, the Tesla of E-bikes*

HYPEBEAST



*VanMoof is redefining the future of urban mobility*

THE TIMES



*VanMoof is reimagining what a bike can do*

TIME



# A HISTORY OF INNOVATION

PRODUCT

MARKETING



Launch first electrified bikes



Integrated Electronic lock



GPS



Kick Lock



Apple 'find my'

Power Bank / VanMoof V



SX3 launch

E shifter / Hydraulic brakes



SA5

New frame design  
Halo Ring interface



Halo Ring features

Braking light



Newly Refined SA5 launch

(2014)

(2015)

(2016)

(2017)

(2018)

(2019)

(2020)

(2021)

(2022)

(2023)

(2024)



TV box  
PR Stunt



Bike hunters  
launch



VanMoof +  
(a subscription)



SX3 launch  
Melting Car TVC



Ride The  
Future  
Brand TVC



Super  
Thieves  
Anti Theft Tech



adidas collab  
Fashion Week



Loewe Collab  
Brand Collab



SA5 launch

# ABOUT VANMOOF

VanMoof was founded in Amsterdam in 2009 with the ambition to create the perfect city bike. Today, its multi-award winning e-mobility collection offers a design-focused, high-tech and feature-rich experience for a global community of city riders.

In 2023 VanMoof was bought by McLaren Applied, which established a new leadership and a new rider-focused vision. As well as selling its rides directly online, VanMoof outsources servicing and sales to its ever-expanding partner network of e-mobility specialists and retailers which now spans 253 sales- and 410 service partners across 15 countries.

VANMOOF



# OUR PARTNER NETWORK

---

**SALES  
PARTNERS**

**253**

---

**SERVICE  
PARTNERS**

**410**

---

**COUNTRIES**

**15**

# RECENT COLLABORATIONS



## *Crack Magazine - 'I know a place'*

---

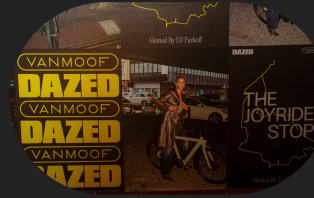
4 upcoming artist. 4 cities. 4 personal stories about urban life, creativity, inspiration and hidden places



## *Glamcult - 'Uncharted Tracks'*

---

3 original tracks inspired by movement around cities. A listening exhibition in Amsterdam. A (very) exclusive vinyl record.



## *Dazed - 'Joyride'*

---

Dazed and VanMoof present *The Joyride*, a new community first initiative in the form of a map presenting Berlin's coolest spots.

# CONTACT INFORMATION

1

*Thijs Plug*

Global Head of PR and Communications

thijs.plug@vanmoof.com  
+31 (0) 6 15 35 63 93

2

*Phoebe Sabajo*

PR & Partnerships  
Manager

phoebe.sabajo@vanmoof.com  
+31 (0) 6 41 64 32 99



Thank you

VANMOOF