

# komoot and Wahoo introduce Live Sync, making route planning and navigation faster for cyclists

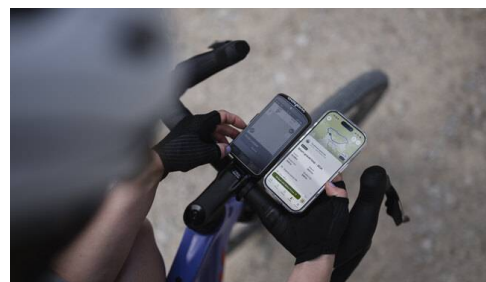
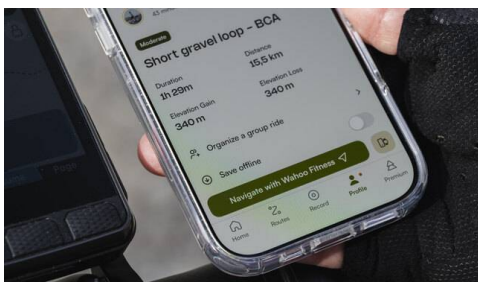
**Plan your route, ride instantly, and adapt mid ride without interruption**

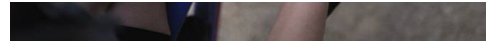
**Milano, May 7, 2026** Outdoor navigation platform komoot and endurance sports technology company Wahoo Fitness are expanding their long-standing integration with the launch of komoot Live Sync, a new feature that allows cyclists to sync routes from komoot to their Wahoo ELEMNT bike computers even faster – and update them on the go. With Live Sync, routes from komoot update in real time on Wahoo ELEMNT bike computers, keeping the ride seamless from start to finish.

The new functionality arrives as ultra-endurance cyclist Lael Wilcox prepares for one of the most ambitious cycling challenges ever attempted: riding around the world in under 78 days, faster than any rider in history. During such rides, routes often need to change quickly due to weather, road closures, or logistical adjustments. Live Sync allows riders to modify a route in the komoot app and have the update appear instantly on their Wahoo device without interrupting navigation.

**"When you're trying to ride around the world as fast as possible, every minute matters. Plans change constantly on a ride like that. Being able to quickly adjust a route and send it straight to your bike computer makes a big difference."**

Lael Wilcox





## Start navigation instantly

With Live Sync, cyclists can plan or choose a route in komoot and start navigating on their Wahoo device by tapping “Navigate with Wahoo.” The route is automatically transferred and ready to follow within seconds.

The feature also allows riders to adjust their route mid-ride. If a change is made in the komoot app, the updated route appears instantly on the connected Wahoo device without stopping the current navigation.

## Planning in komoot, navigation on Wahoo

The integration combines komoot’s route planning tools with navigation on Wahoo ELEMNT bike computers. Riders can plan routes using komoot features such as global heatmaps, surface and way-type information, highlights from the community, and points of interest along the route.

**Press images are available [here](#).**

Please use the following photo credits: Road Bike Connection Spring (Mirror Media / Rupert Fowler)

Journalists who own a compatible Wahoo ELEMNT bike computer can request early access to test Live Sync.

### **About komoot**

Komoot is a thriving digital platform for adventurers and outdoor enthusiasts around the world. Driven by a simple goal—to help people explore more of the outdoors wherever and however they want—komoot provides advanced route planning and navigation tools across mobile, web, and connected devices. A content-rich feed of real-life stories and recommendations from its community of over 50 million users inspires people to discover and share outdoor experiences worldwide. For more information, visit [komoot.com](https://komoot.com)

Press contact komoot

Daniela Withalm

[daniela.withalm@komoot.de](mailto:daniela.withalm@komoot.de)

### **About WahooFitness**

Located in Atlanta, GA, Wahoo Fitness' vision is to build the better athlete in all of us, by transforming the way the world moves through connected fitness technology and training insights. Wahoo creates a full ecosystem of software, sensors, indoor, and outdoor training equipment for those just starting their athlete journey in cycling, running, triathlon and general fitness, through to competitive athletes. Learn more about Wahoo's full line of products and apps at [WahooFitness.com](https://WahooFitness.com)

Press contact WahooFitness

Anna Curran & Ben Chapman

[wahoo@fusion-media.co.uk](mailto:wahoo@fusion-media.co.uk)

## Contact details

### Media Enquiries

[media@komoot.de](mailto:media@komoot.de)

## Copy link

<https://newsroom.komoot.com/265062-komoot-and-wahoo-introduce-live-sync-making-route-planning-and-navigation-faster-for-cyclists/>