



**TECH UPDATE
ANNOUNCEMENT**

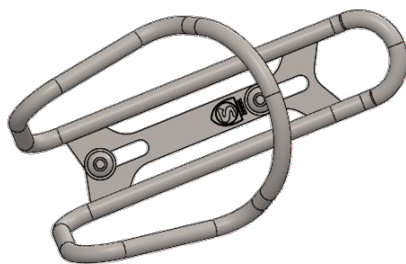


NEW + IMPROVED TITANIUM BOTTLE CAGE

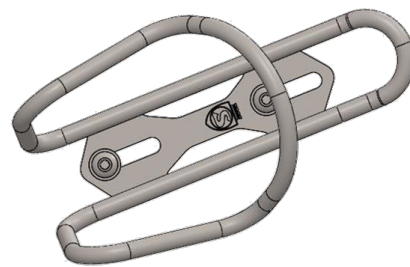
The beauty of the SICURO Titanium Bottle Cage is really within the flexibility. We are not talking about the material itself; but how well it installs on a multitude of frames. Adding to the charm, we have been able to custom laser engrave and anodize it. With all great products, we felt it was time to improve the design for even greater usability.

We are proud to announce a redesigned of the baseplate for the SICURO Ti Bottle Cage. These improvements, are not only stylish, but have purpose. The plate allows the rider to adjust an additional 7mm fore-aft for better positioning. The new shape allows the cage to sit 5mm higher than the previous design; making it a better fit on small frames, as well as, full-suspension frames

At-a-glance view of the first generation of the SICURO Ti Bottle Cage compared to the second.



1ST GENERATION



2ND GENERATION



**ADDITIONAL
FORE-AFT
POSITION**



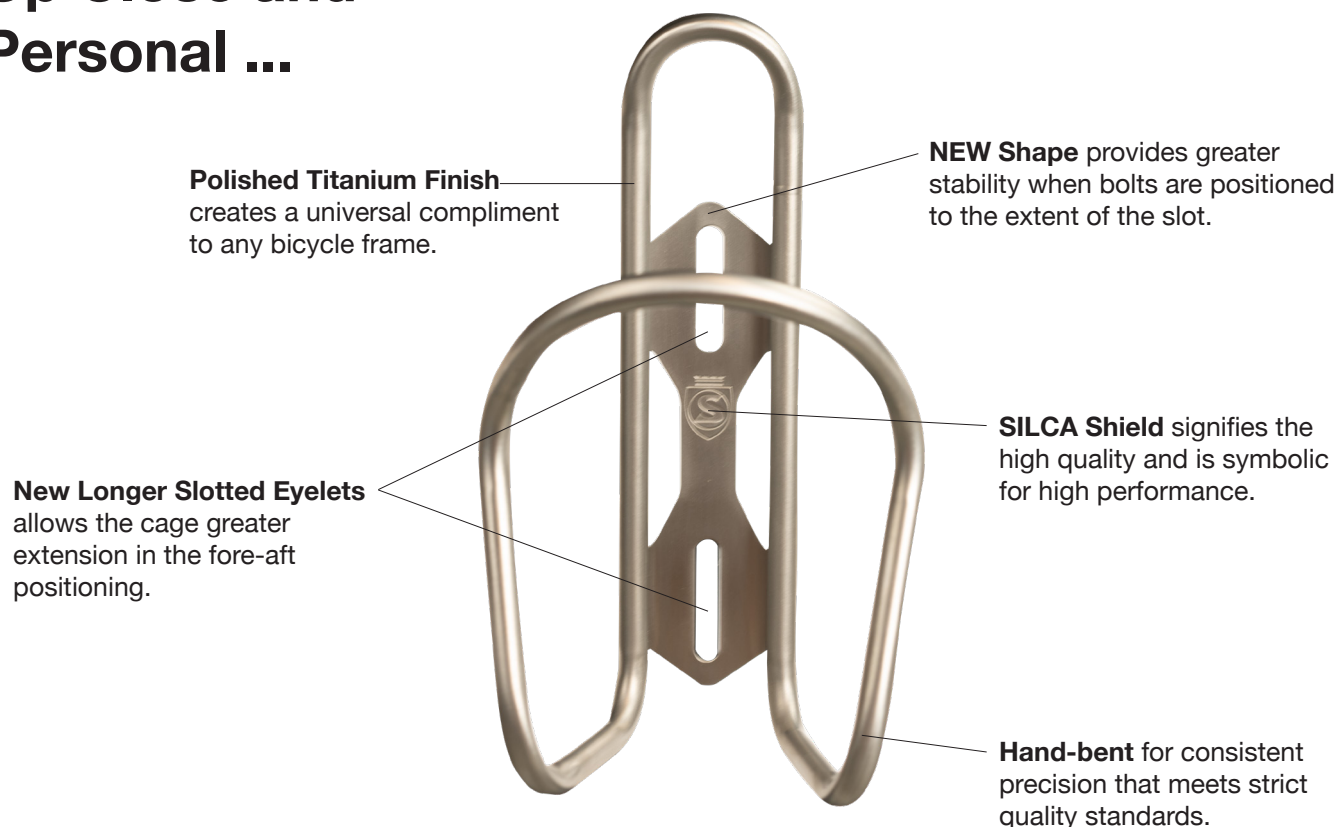
**ADDITIONAL
ADJUSTABLE
HEIGHT**



**MORE
AFFORDABLE
PRICE**

**Improving
on Perfection**

Up Close and Personal ...



Same Process, Same Materials...Different Design

Each SICURO Ti cage is hand-made in the USA at our Indianapolis, IN headquarters using custom manufacturing processes and a state of the art laser welder, the first of its kind in the bicycle industry. Made from aerospace-grade titanium tubing, these cages feature unique slotted mounting eyelets which allow fore/aft adjustability on the bike.

In our quest to create the ultimate bottle cage, we found ourselves completely fascinated by the look, feel and durability of tubular titanium construction. This combination of design characteristics produces a cage that has better retention on gravel and other harsh surfaces and has proven to be the superior design when mounted on the underside of the down tube, so common in adventure riding and touring. While classic in appearance, this material and its manufacturing are as complex and high tech as it gets.

Statistical Information

- Seamless 3-2.5 titanium tubing
- Extended adjustment mounting - up to 25mm fore-aft
- Weight - 30 grams
- SILCA Shield Warranty included covering your cage for 25 years